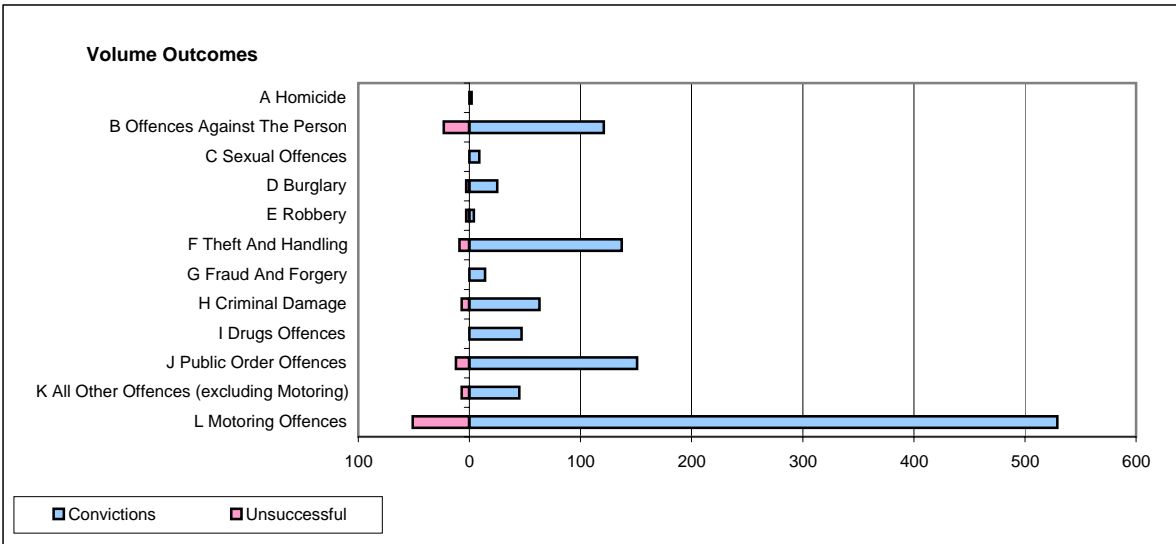
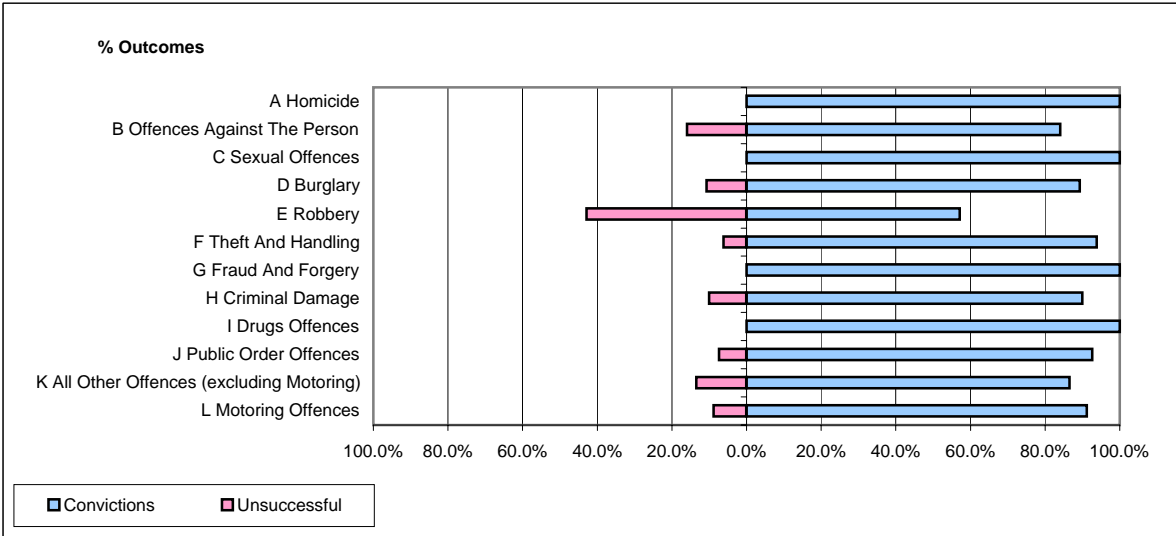


**CPS OUTCOMES BY PRINCIPAL OFFENCE CATEGORY**

January 2008

**P29-NorthWales**



	Convictions		Unsuccessful	
	Number of Defendants	%	Number of Defendants	%
<b>A Homicide</b>	<b>2</b>	<b>100.0%</b>	<b>0</b>	<b>0.0%</b>
<b>B Offences Against The Person</b>	<b>121</b>	<b>84.0%</b>	<b>23</b>	<b>16.0%</b>
<b>C Sexual Offences</b>	<b>9</b>	<b>100.0%</b>	<b>0</b>	<b>0.0%</b>
<b>D Burglary</b>	<b>25</b>	<b>89.3%</b>	<b>3</b>	<b>10.7%</b>
<b>E Robbery</b>	<b>4</b>	<b>57.1%</b>	<b>3</b>	<b>42.9%</b>
<b>F Theft And Handling</b>	<b>137</b>	<b>93.8%</b>	<b>9</b>	<b>6.2%</b>
<b>G Fraud And Forgery</b>	<b>14</b>	<b>100.0%</b>	<b>0</b>	<b>0.0%</b>
<b>H Criminal Damage</b>	<b>63</b>	<b>90.0%</b>	<b>7</b>	<b>10.0%</b>
<b>I Drugs Offences</b>	<b>47</b>	<b>100.0%</b>	<b>0</b>	<b>0.0%</b>
<b>J Public Order Offences</b>	<b>151</b>	<b>92.6%</b>	<b>12</b>	<b>7.4%</b>
<b>K All Other Offences (excluding Motoring)</b>	<b>45</b>	<b>86.5%</b>	<b>7</b>	<b>13.5%</b>
<b>L Motoring Offences</b>	<b>529</b>	<b>91.2%</b>	<b>51</b>	<b>8.8%</b>
<b>Admin Finalisations</b>	<b>0</b>	<b>0.0%</b>	<b>11</b>	<b>100.0%</b>
<b>TOTAL</b>	<b>1,147</b>	<b>90.1%</b>	<b>126</b>	<b>9.9%</b>