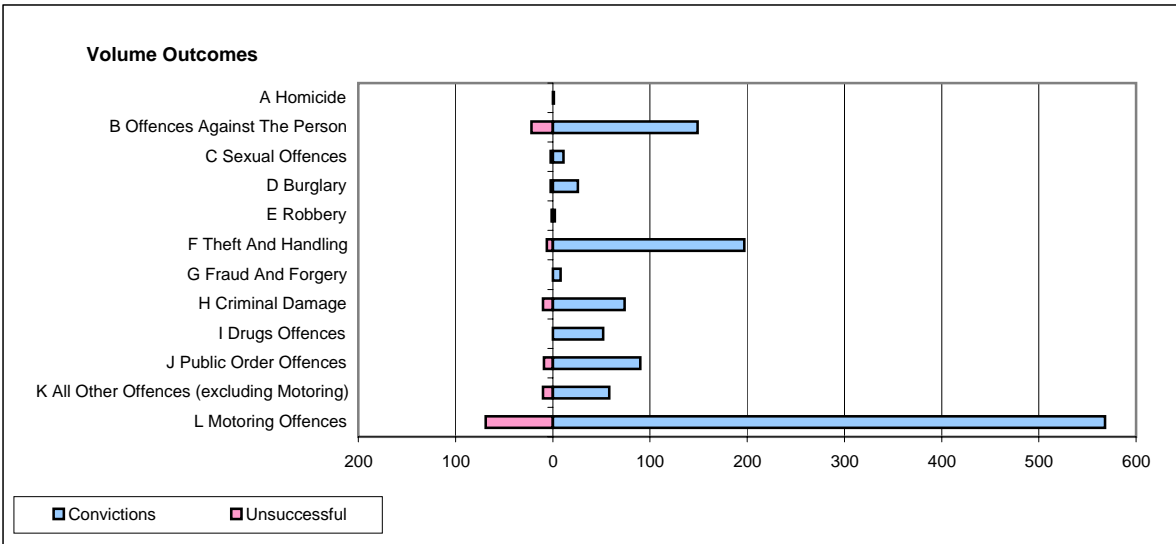
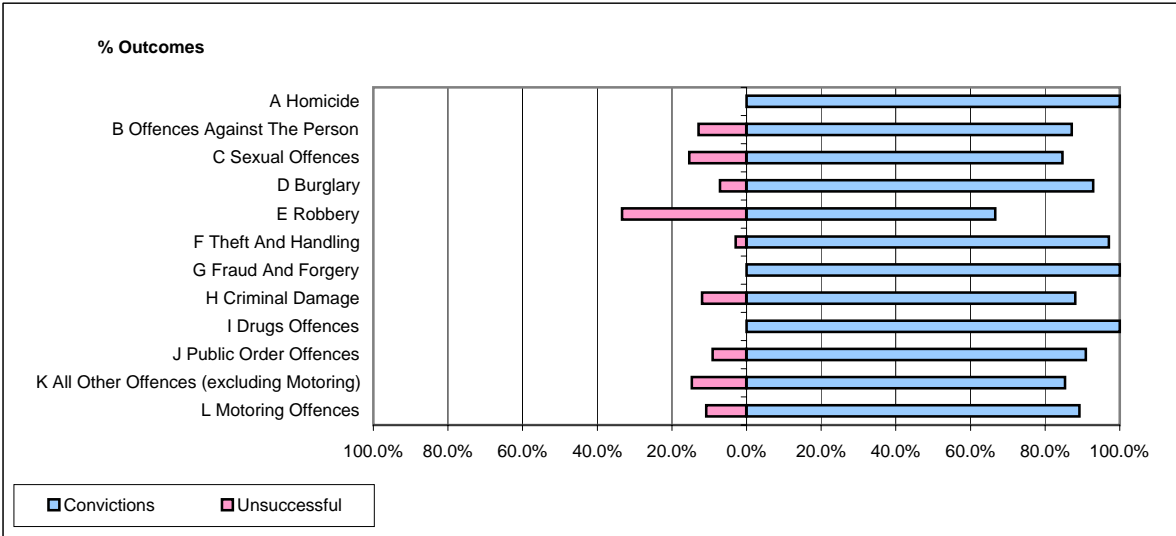


CPS OUTCOMES BY PRINCIPAL OFFENCE CATEGORY

January 2008

P26-Norfolk



	Convictions		Unsuccessful	
	Number of Defendants	%	Number of Defendants	%
A Homicide	1	100.0%	0	0.0%
B Offences Against The Person	149	87.1%	22	12.9%
C Sexual Offences	11	84.6%	2	15.4%
D Burglary	26	92.9%	2	7.1%
E Robbery	2	66.7%	1	33.3%
F Theft And Handling	197	97.0%	6	3.0%
G Fraud And Forgery	8	100.0%	0	0.0%
H Criminal Damage	74	88.1%	10	11.9%
I Drugs Offences	52	100.0%	0	0.0%
J Public Order Offences	90	90.9%	9	9.1%
K All Other Offences (excluding Motoring)	58	85.3%	10	14.7%
L Motoring Offences	568	89.2%	69	10.8%
Admin Finalisations	0	0.0%	18	100.0%
TOTAL	1,236	89.2%	149	10.8%