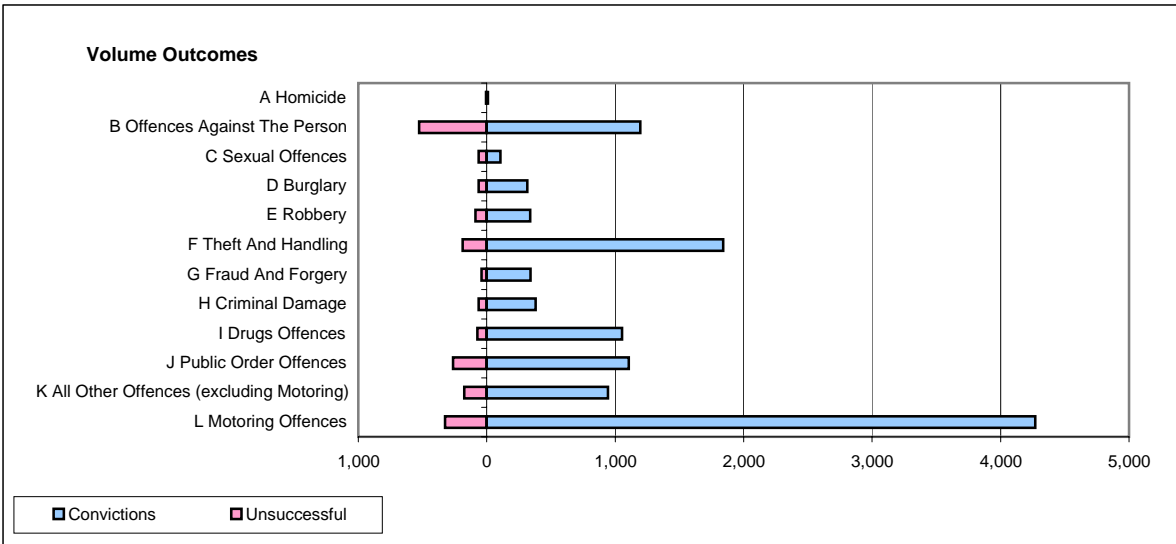
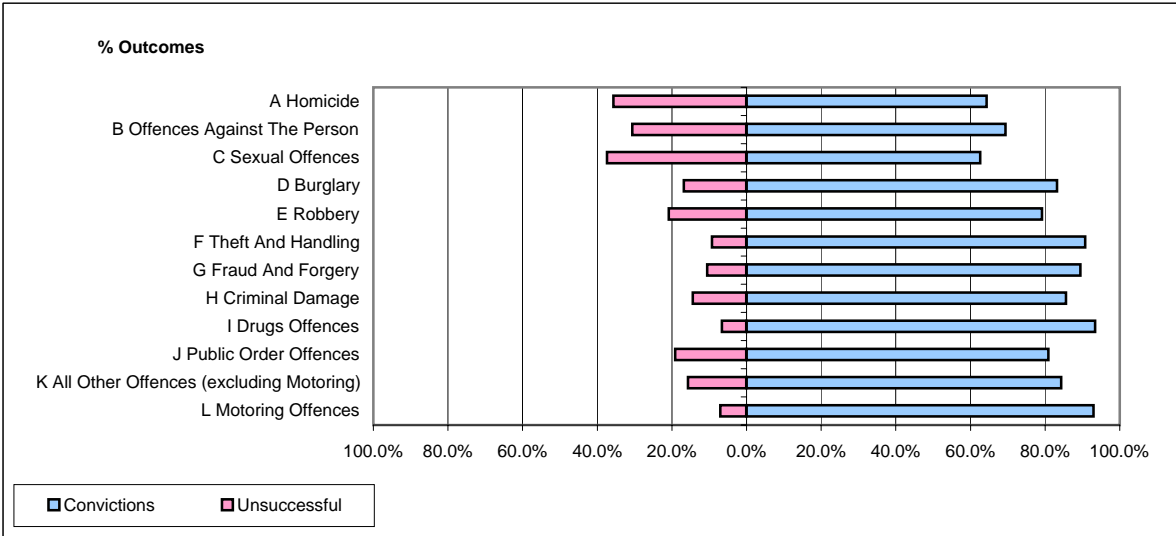


CPS OUTCOMES BY PRINCIPAL OFFENCE CATEGORY

January 2008

P25-Metropolitan&City



	Convictions		Unsuccessful	
	Number of Defendants	%	Number of Defendants	%
A Homicide	9	64.3%	5	35.7%
B Offences Against The Person	1,196	69.4%	527	30.6%
C Sexual Offences	107	62.6%	64	37.4%
D Burglary	316	83.2%	64	16.8%
E Robbery	338	79.2%	89	20.8%
F Theft And Handling	1,840	90.7%	188	9.3%
G Fraud And Forgery	340	89.5%	40	10.5%
H Criminal Damage	380	85.6%	64	14.4%
I Drugs Offences	1,053	93.4%	74	6.6%
J Public Order Offences	1,105	80.8%	262	19.2%
K All Other Offences (excluding Motoring)	944	84.3%	176	15.7%
L Motoring Offences	4,269	92.9%	324	7.1%
Admin Finalisations	0	0.0%	374	100.0%
TOTAL	11,897	84.1%	2,251	15.9%