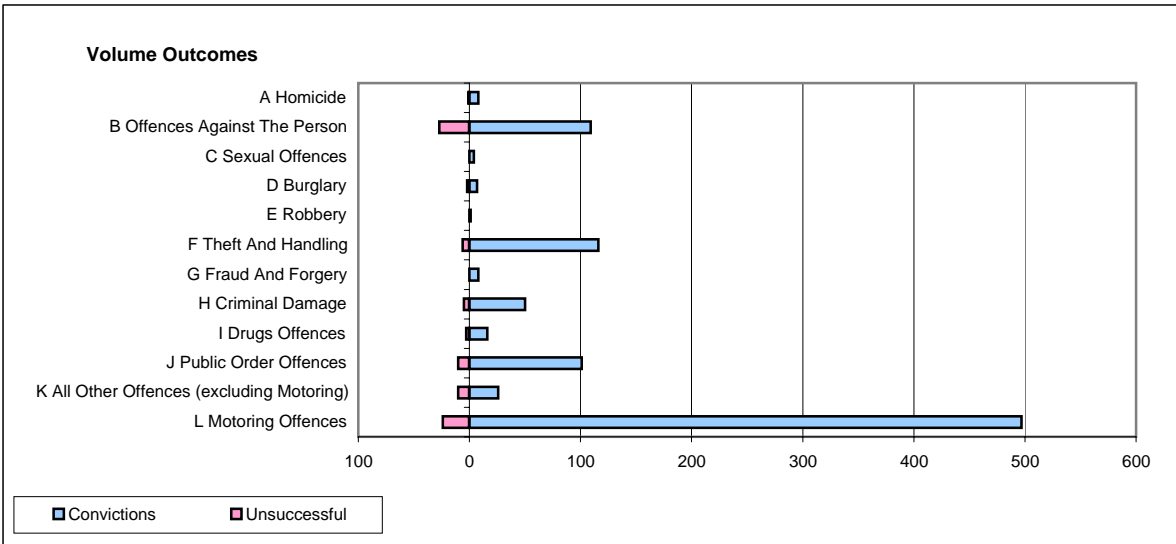
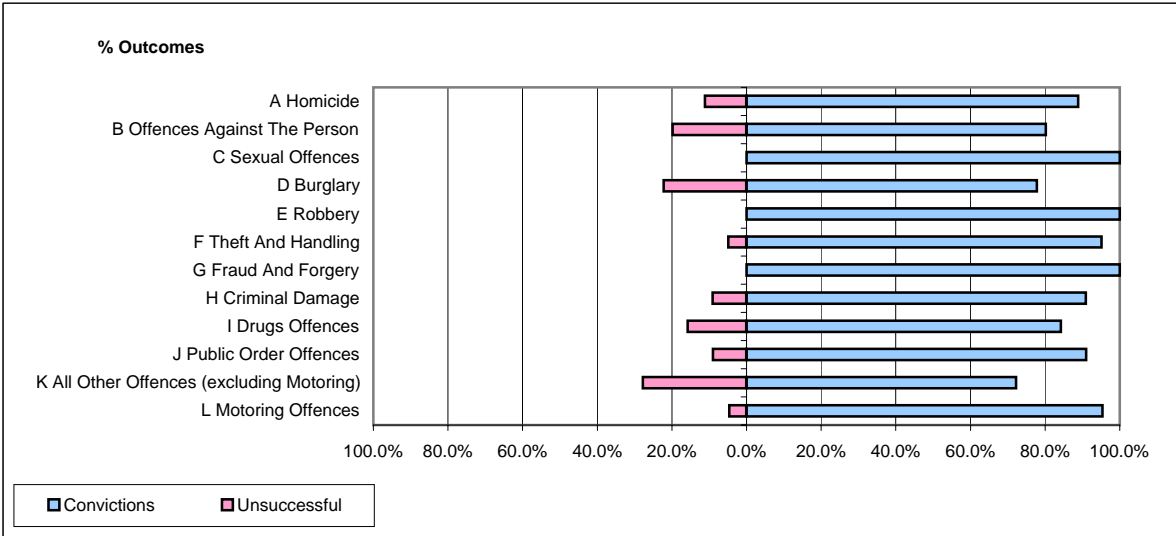


CPS OUTCOMES BY PRINCIPAL OFFENCE CATEGORY

January 2008

P23-Lincolnshire



	Convictions		Unsuccessful	
	Number of Defendants	%	Number of Defendants	%
A Homicide	8	88.9%	1	11.1%
B Offences Against The Person	109	80.1%	27	19.9%
C Sexual Offences	4	100.0%	0	0.0%
D Burglary	7	77.8%	2	22.2%
E Robbery	1	100.0%	0	0.0%
F Theft And Handling	116	95.1%	6	4.9%
G Fraud And Forgery	8	100.0%	0	0.0%
H Criminal Damage	50	90.9%	5	9.1%
I Drugs Offences	16	84.2%	3	15.8%
J Public Order Offences	101	91.0%	10	9.0%
K All Other Offences (excluding Motoring)	26	72.2%	10	27.8%
L Motoring Offences	497	95.4%	24	4.6%
Admin Finalisations	0	0.0%	7	100.0%
TOTAL	943	90.8%	95	9.2%