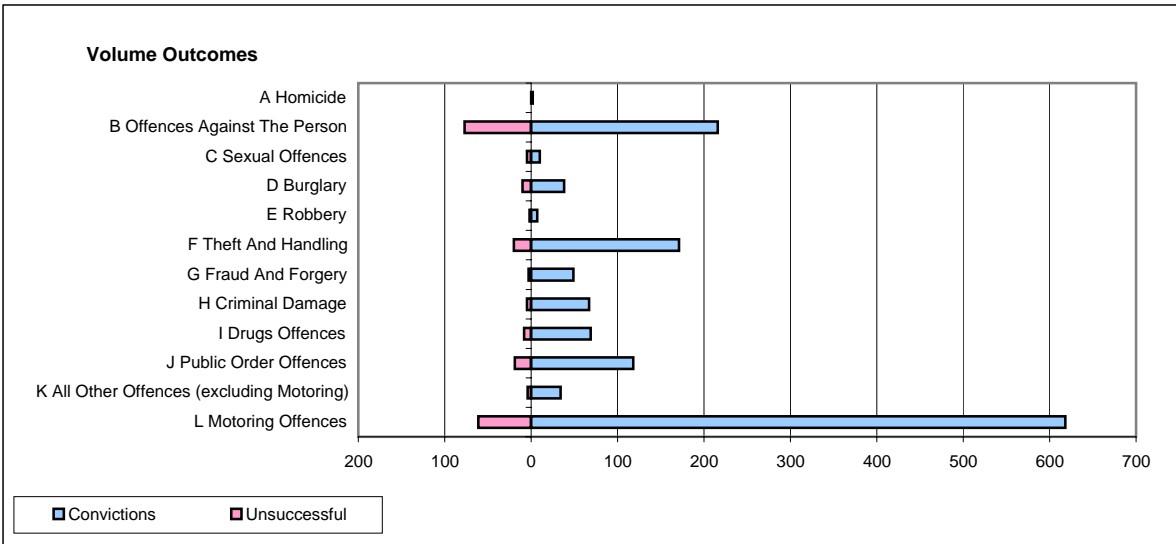
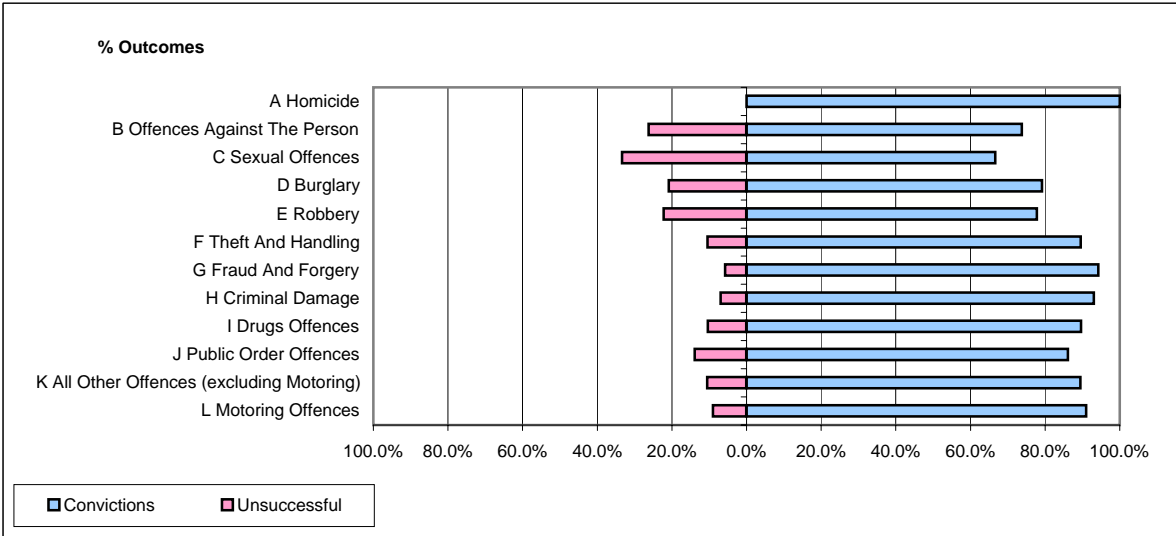


CPS OUTCOMES BY PRINCIPAL OFFENCE CATEGORY

January 2008

P22-Leicestershire



	Convictions		Unsuccessful	
	Number of Defendants	%	Number of Defendants	%
A Homicide	2	100.0%	0	0.0%
B Offences Against The Person	216	73.7%	77	26.3%
C Sexual Offences	10	66.7%	5	33.3%
D Burglary	38	79.2%	10	20.8%
E Robbery	7	77.8%	2	22.2%
F Theft And Handling	171	89.5%	20	10.5%
G Fraud And Forgery	49	94.2%	3	5.8%
H Criminal Damage	67	93.1%	5	6.9%
I Drugs Offences	69	89.6%	8	10.4%
J Public Order Offences	118	86.1%	19	13.9%
K All Other Offences (excluding Motoring)	34	89.5%	4	10.5%
L Motoring Offences	618	91.0%	61	9.0%
Admin Finalisations	0	0.0%	26	100.0%
TOTAL	1,399	85.4%	240	14.6%