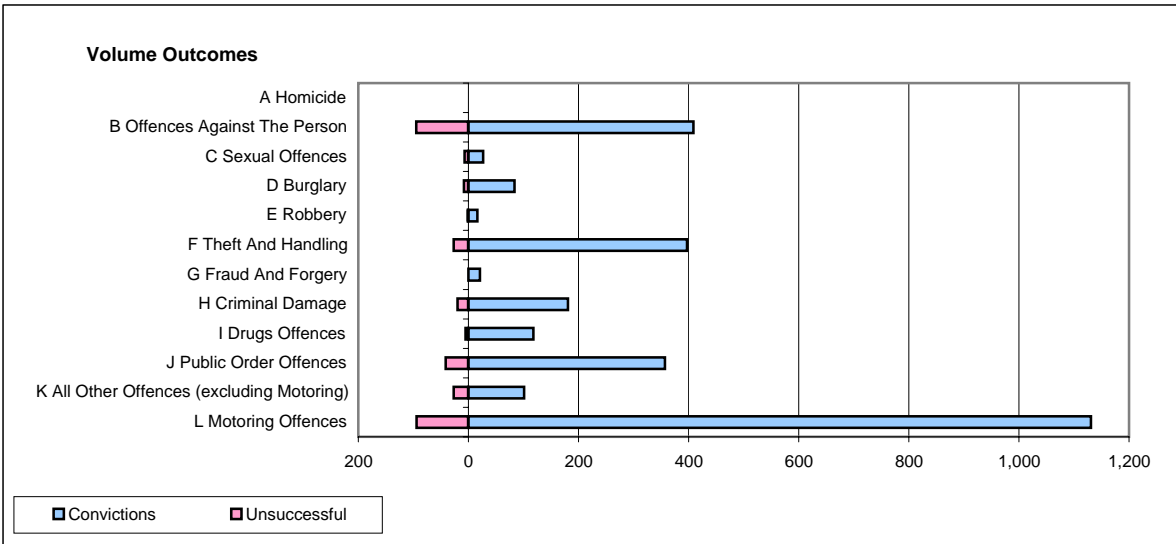
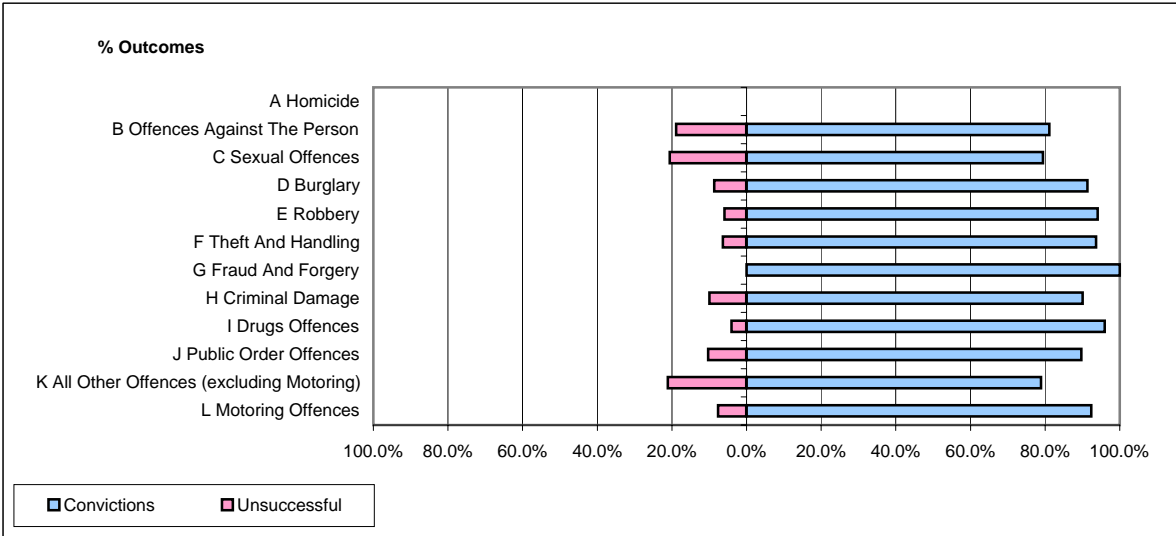


**CPS OUTCOMES BY PRINCIPAL OFFENCE CATEGORY**

**January 2008**

**P21-Lancashire**



	Convictions		Unsuccessful	
	Number of Defendants	%	Number of Defendants	%
<b>A Homicide</b>	<b>0</b>	<b>0</b>	<b>0</b>	<b>0</b>
<b>B Offences Against The Person</b>	<b>409</b>	<b>81.2%</b>	<b>95</b>	<b>18.8%</b>
<b>C Sexual Offences</b>	<b>27</b>	<b>79.4%</b>	<b>7</b>	<b>20.6%</b>
<b>D Burglary</b>	<b>84</b>	<b>91.3%</b>	<b>8</b>	<b>8.7%</b>
<b>E Robbery</b>	<b>16</b>	<b>94.1%</b>	<b>1</b>	<b>5.9%</b>
<b>F Theft And Handling</b>	<b>397</b>	<b>93.6%</b>	<b>27</b>	<b>6.4%</b>
<b>G Fraud And Forgery</b>	<b>21</b>	<b>100.0%</b>	<b>0</b>	<b>0.0%</b>
<b>H Criminal Damage</b>	<b>181</b>	<b>90.0%</b>	<b>20</b>	<b>10.0%</b>
<b>I Drugs Offences</b>	<b>118</b>	<b>95.9%</b>	<b>5</b>	<b>4.1%</b>
<b>J Public Order Offences</b>	<b>357</b>	<b>89.7%</b>	<b>41</b>	<b>10.3%</b>
<b>K All Other Offences (excluding Motoring)</b>	<b>101</b>	<b>78.9%</b>	<b>27</b>	<b>21.1%</b>
<b>L Motoring Offences</b>	<b>1,131</b>	<b>92.3%</b>	<b>94</b>	<b>7.7%</b>
<b>Admin Finalisations</b>	<b>0</b>	<b>0.0%</b>	<b>37</b>	<b>100.0%</b>
<b>TOTAL</b>	<b>2,842</b>	<b>88.7%</b>	<b>362</b>	<b>11.3%</b>