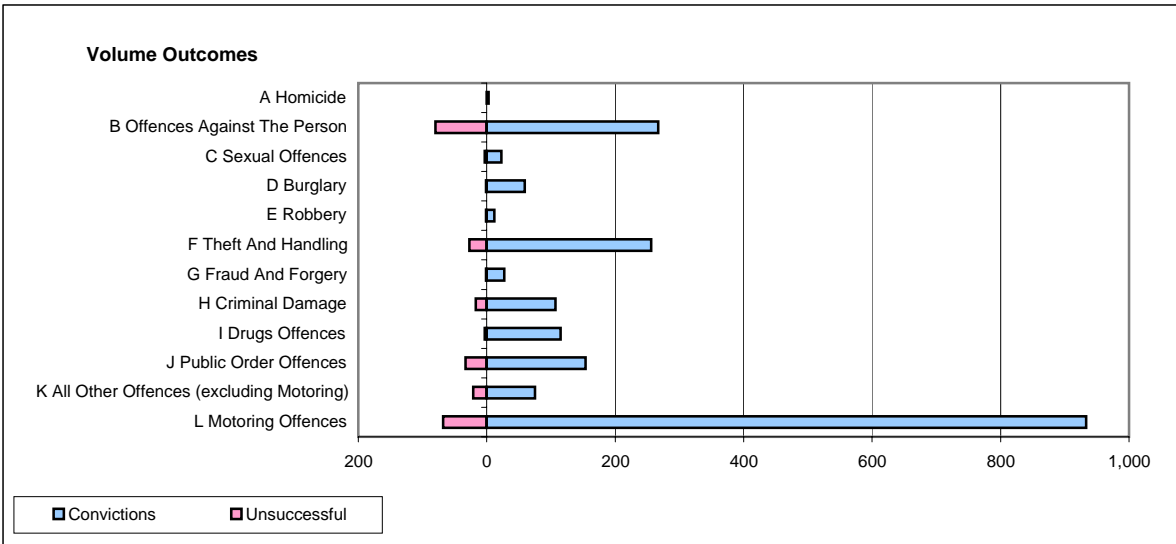
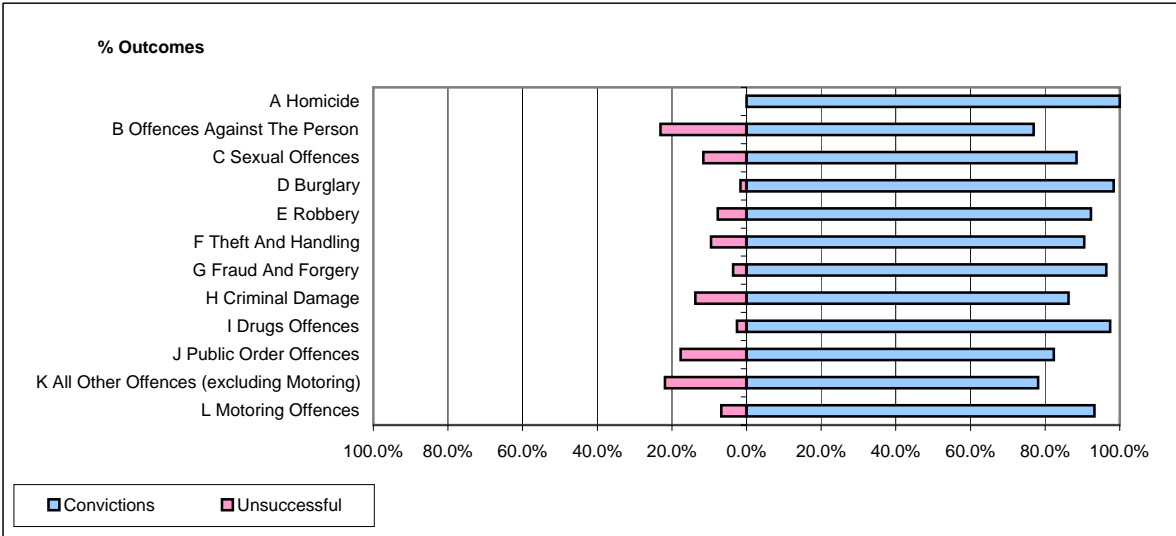


CPS OUTCOMES BY PRINCIPAL OFFENCE CATEGORY

January 2008

P20-Kent



	Convictions		Unsuccessful	
	Number of Defendants	%	Number of Defendants	%
A Homicide	3	100.0%	0	0.0%
B Offences Against The Person	267	76.9%	80	23.1%
C Sexual Offences	23	88.5%	3	11.5%
D Burglary	59	98.3%	1	1.7%
E Robbery	12	92.3%	1	7.7%
F Theft And Handling	256	90.5%	27	9.5%
G Fraud And Forgery	27	96.4%	1	3.6%
H Criminal Damage	107	86.3%	17	13.7%
I Drugs Offences	115	97.5%	3	2.5%
J Public Order Offences	154	82.4%	33	17.6%
K All Other Offences (excluding Motoring)	75	78.1%	21	21.9%
L Motoring Offences	933	93.2%	68	6.8%
Admin Finalisations	0	0.0%	32	100.0%
TOTAL	2,031	87.6%	287	12.4%