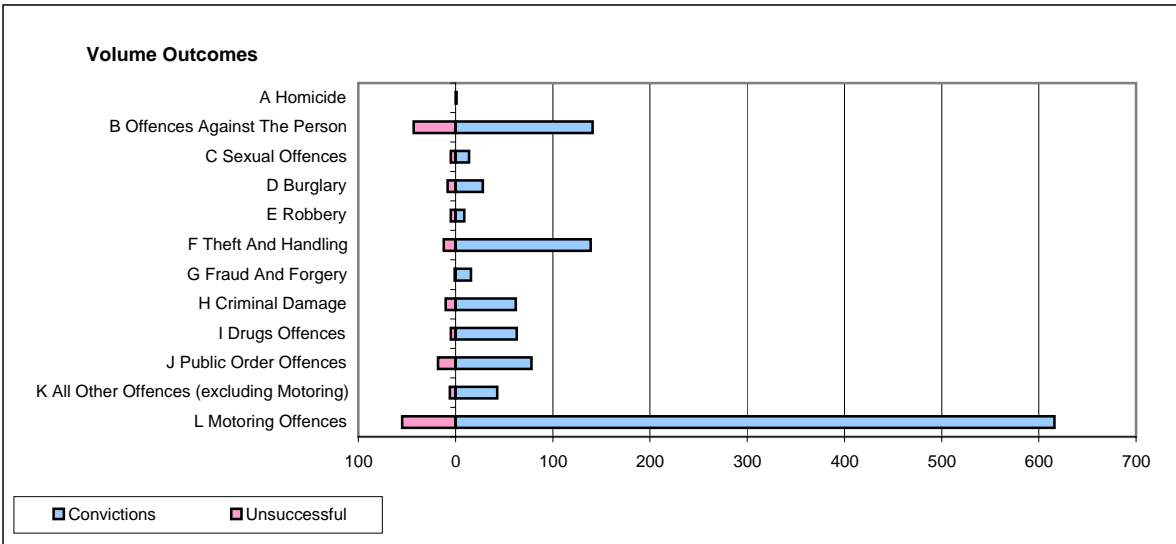
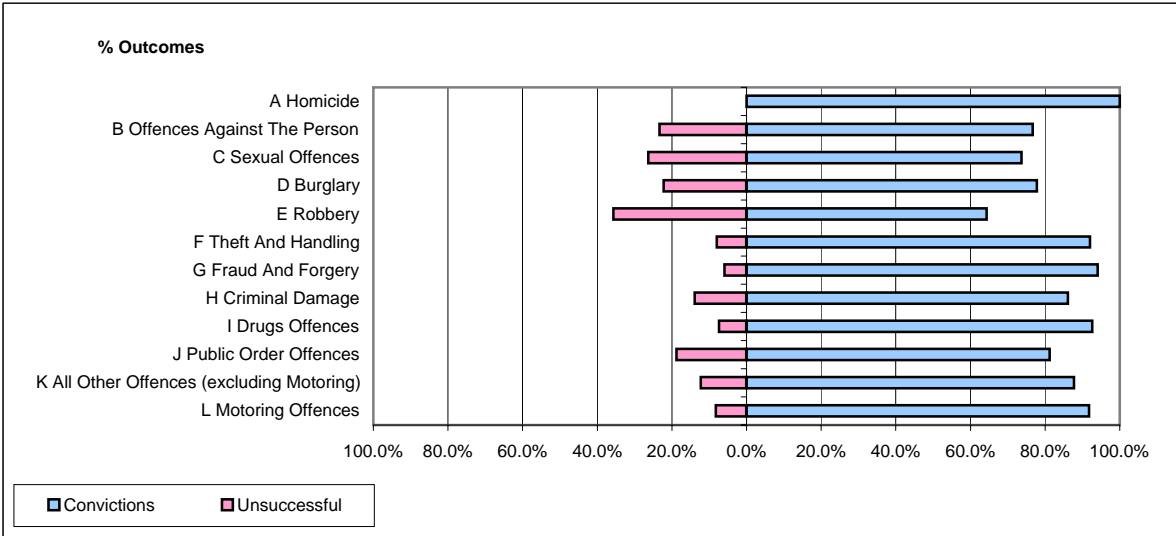


**CPS OUTCOMES BY PRINCIPAL OFFENCE CATEGORY**

January 2008

**P18-Hertfordshire**



	Convictions		Unsuccessful	
	Number of Defendants	%	Number of Defendants	%
<b>A Homicide</b>	1	100.0%	0	0.0%
<b>B Offences Against The Person</b>	141	76.6%	43	23.4%
<b>C Sexual Offences</b>	14	73.7%	5	26.3%
<b>D Burglary</b>	28	77.8%	8	22.2%
<b>E Robbery</b>	9	64.3%	5	35.7%
<b>F Theft And Handling</b>	139	92.1%	12	7.9%
<b>G Fraud And Forgery</b>	16	94.1%	1	5.9%
<b>H Criminal Damage</b>	62	86.1%	10	13.9%
<b>I Drugs Offences</b>	63	92.6%	5	7.4%
<b>J Public Order Offences</b>	78	81.3%	18	18.8%
<b>K All Other Offences (excluding Motoring)</b>	43	87.8%	6	12.2%
<b>L Motoring Offences</b>	616	91.8%	55	8.2%
<b>Admin Finalisations</b>	0	0.0%	35	100.0%
<b>TOTAL</b>	1,210	85.6%	203	14.4%