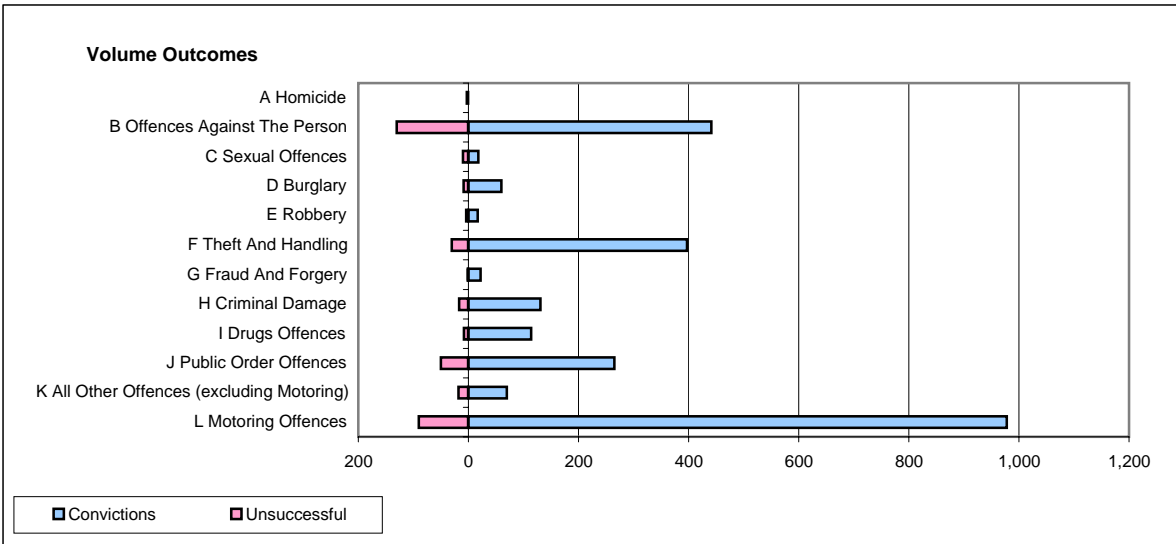
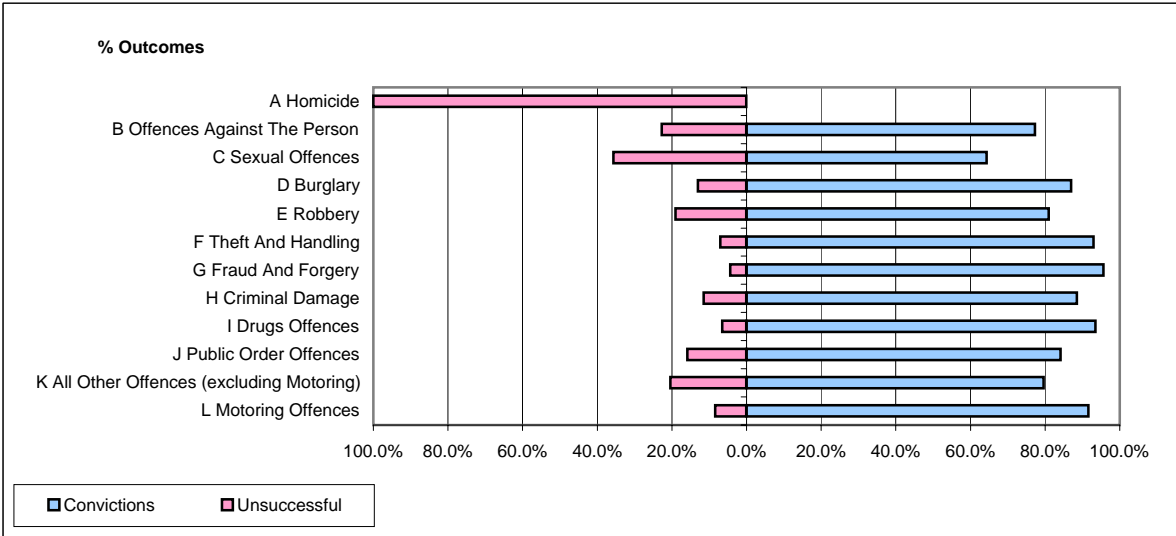


**CPS OUTCOMES BY PRINCIPAL OFFENCE CATEGORY**

January 2008

**P17-Hampshire**



	Convictions		Unsuccessful	
	Number of Defendants	%	Number of Defendants	%
<b>A Homicide</b>	<b>0</b>	<b>0.0%</b>	<b>3</b>	<b>100.0%</b>
<b>B Offences Against The Person</b>	<b>441</b>	<b>77.2%</b>	<b>130</b>	<b>22.8%</b>
<b>C Sexual Offences</b>	<b>18</b>	<b>64.3%</b>	<b>10</b>	<b>35.7%</b>
<b>D Burglary</b>	<b>60</b>	<b>87.0%</b>	<b>9</b>	<b>13.0%</b>
<b>E Robbery</b>	<b>17</b>	<b>81.0%</b>	<b>4</b>	<b>19.0%</b>
<b>F Theft And Handling</b>	<b>397</b>	<b>93.0%</b>	<b>30</b>	<b>7.0%</b>
<b>G Fraud And Forgery</b>	<b>22</b>	<b>95.7%</b>	<b>1</b>	<b>4.3%</b>
<b>H Criminal Damage</b>	<b>131</b>	<b>88.5%</b>	<b>17</b>	<b>11.5%</b>
<b>I Drugs Offences</b>	<b>114</b>	<b>93.4%</b>	<b>8</b>	<b>6.6%</b>
<b>J Public Order Offences</b>	<b>265</b>	<b>84.1%</b>	<b>50</b>	<b>15.9%</b>
<b>K All Other Offences (excluding Motoring)</b>	<b>70</b>	<b>79.5%</b>	<b>18</b>	<b>20.5%</b>
<b>L Motoring Offences</b>	<b>978</b>	<b>91.6%</b>	<b>90</b>	<b>8.4%</b>
<b>Admin Finalisations</b>	<b>0</b>	<b>0.0%</b>	<b>24</b>	<b>100.0%</b>
<b>TOTAL</b>	<b>2,513</b>	<b>86.4%</b>	<b>394</b>	<b>13.6%</b>