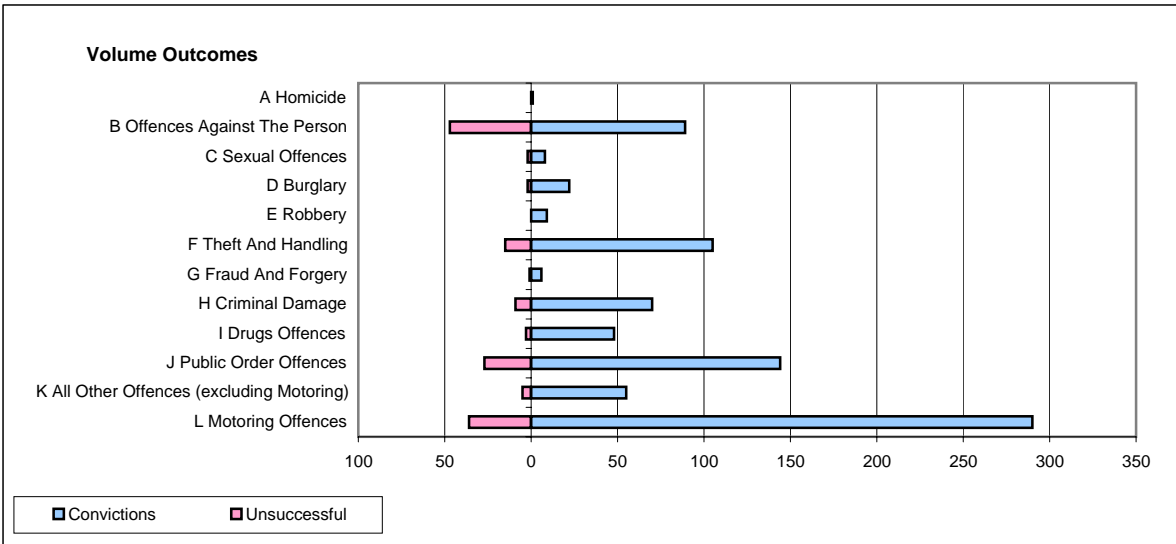
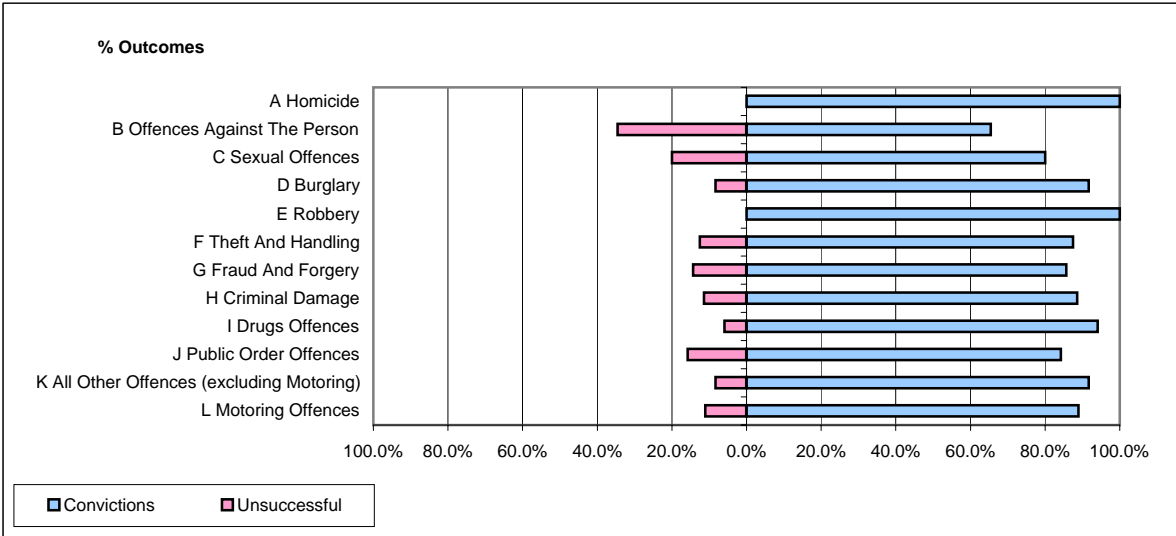


CPS OUTCOMES BY PRINCIPAL OFFENCE CATEGORY

January 2008

P16-Gwent



	Convictions		Unsuccessful	
	Number of Defendants	%	Number of Defendants	%
A Homicide	1	100.0%	0	0.0%
B Offences Against The Person	89	65.4%	47	34.6%
C Sexual Offences	8	80.0%	2	20.0%
D Burglary	22	91.7%	2	8.3%
E Robbery	9	100.0%	0	0.0%
F Theft And Handling	105	87.5%	15	12.5%
G Fraud And Forgery	6	85.7%	1	14.3%
H Criminal Damage	70	88.6%	9	11.4%
I Drugs Offences	48	94.1%	3	5.9%
J Public Order Offences	144	84.2%	27	15.8%
K All Other Offences (excluding Motoring)	55	91.7%	5	8.3%
L Motoring Offences	290	89.0%	36	11.0%
Admin Finalisations	0	0.0%	18	100.0%
TOTAL	847	83.7%	165	16.3%