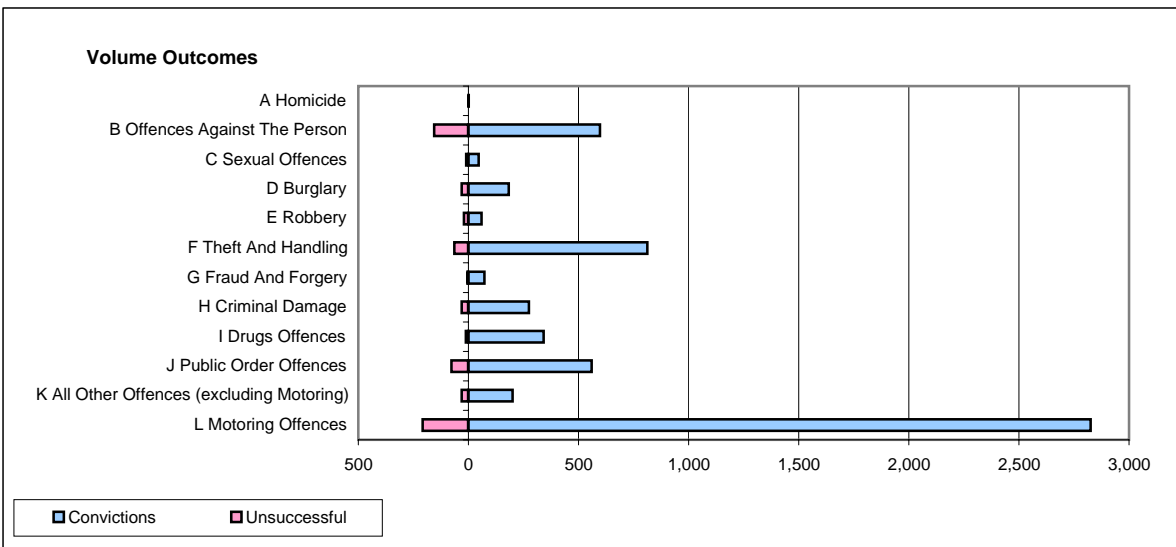
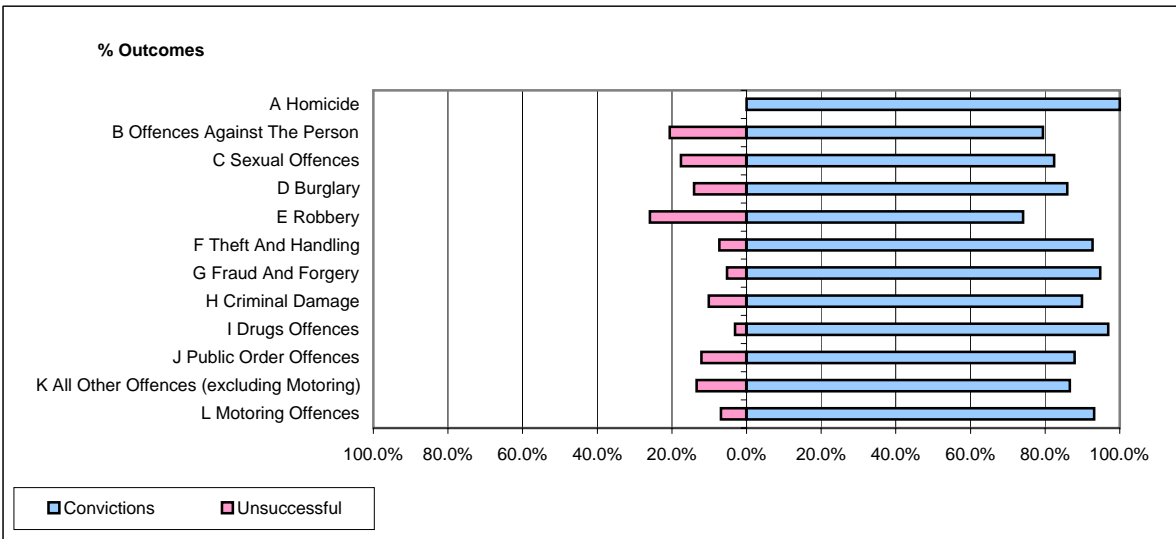


CPS OUTCOMES BY PRINCIPAL OFFENCE CATEGORY

January 2008

P15-GreaterManchester



	Convictions		Unsuccessful	
	Number of Defendants	%	Number of Defendants	%
A Homicide	1	100.0%	0	0.0%
B Offences Against The Person	597	79.4%	155	20.6%
C Sexual Offences	47	82.5%	10	17.5%
D Burglary	183	85.9%	30	14.1%
E Robbery	60	74.1%	21	25.9%
F Theft And Handling	812	92.7%	64	7.3%
G Fraud And Forgery	72	94.7%	4	5.3%
H Criminal Damage	275	89.9%	31	10.1%
I Drugs Offences	341	96.9%	11	3.1%
J Public Order Offences	560	87.9%	77	12.1%
K All Other Offences (excluding Motoring)	201	86.6%	31	13.4%
L Motoring Offences	2,826	93.1%	208	6.9%
Admin Finalisations	0	0.0%	75	100.0%
TOTAL	5,975	89.3%	717	10.7%