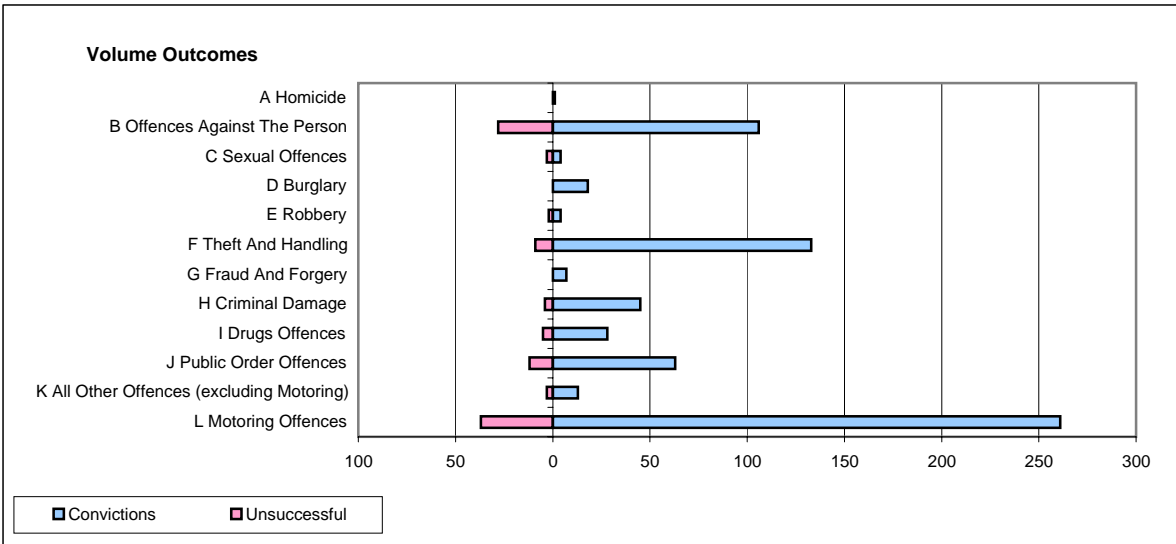
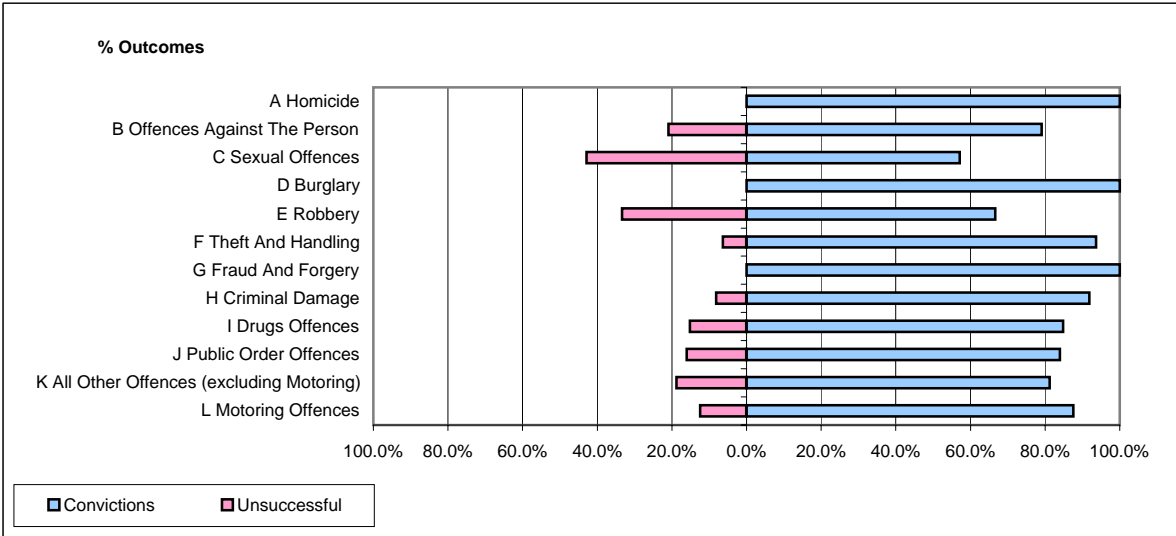


CPS OUTCOMES BY PRINCIPAL OFFENCE CATEGORY

January 2008

P14-Gloucestershire



	Convictions		Unsuccessful	
	Number of Defendants	%	Number of Defendants	%
A Homicide	1	100.0%	0	0.0%
B Offences Against The Person	106	79.1%	28	20.9%
C Sexual Offences	4	57.1%	3	42.9%
D Burglary	18	100.0%	0	0.0%
E Robbery	4	66.7%	2	33.3%
F Theft And Handling	133	93.7%	9	6.3%
G Fraud And Forgery	7	100.0%	0	0.0%
H Criminal Damage	45	91.8%	4	8.2%
I Drugs Offences	28	84.8%	5	15.2%
J Public Order Offences	63	84.0%	12	16.0%
K All Other Offences (excluding Motoring)	13	81.3%	3	18.8%
L Motoring Offences	261	87.6%	37	12.4%
Admin Finalisations	0	0.0%	12	100.0%
TOTAL	683	85.6%	115	14.4%