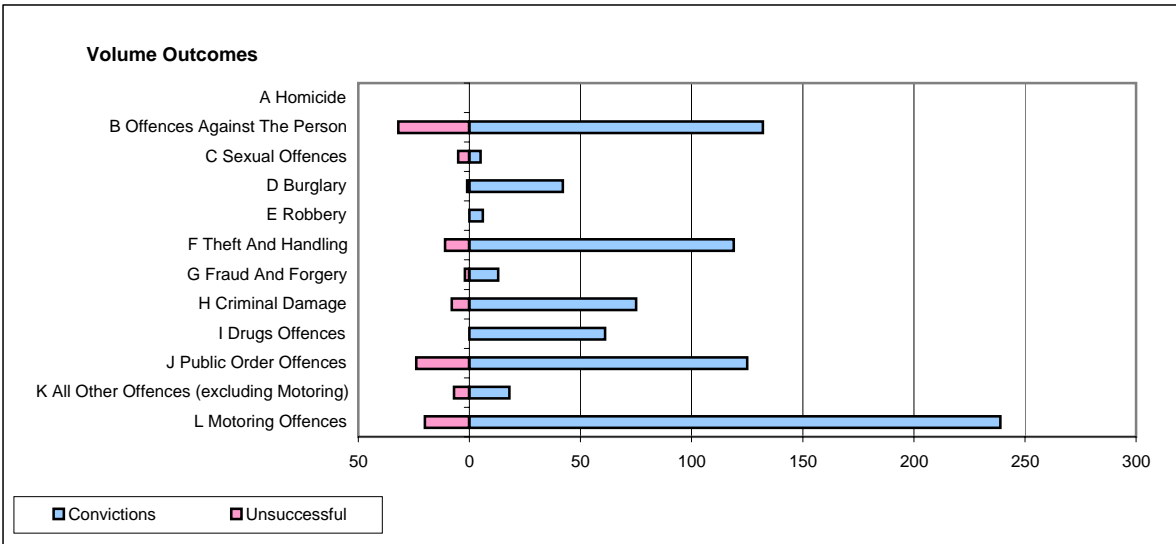
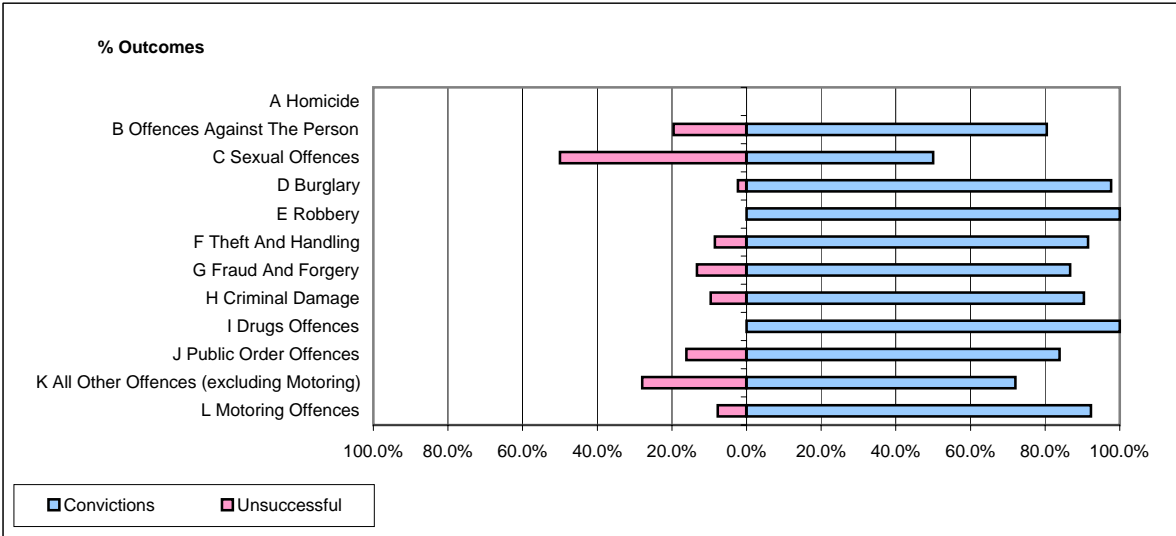


CPS OUTCOMES BY PRINCIPAL OFFENCE CATEGORY

January 2008

P11-Durham



	Convictions		Unsuccessful	
	Number of Defendants	%	Number of Defendants	%
A Homicide	0	0	0	0
B Offences Against The Person	132	80.5%	32	19.5%
C Sexual Offences	5	50.0%	5	50.0%
D Burglary	42	97.7%	1	2.3%
E Robbery	6	100.0%	0	0.0%
F Theft And Handling	119	91.5%	11	8.5%
G Fraud And Forgery	13	86.7%	2	13.3%
H Criminal Damage	75	90.4%	8	9.6%
I Drugs Offences	61	100.0%	0	0.0%
J Public Order Offences	125	83.9%	24	16.1%
K All Other Offences (excluding Motoring)	18	72.0%	7	28.0%
L Motoring Offences	239	92.3%	20	7.7%
Admin Finalisations	0	0.0%	6	100.0%
TOTAL	835	87.8%	116	12.2%