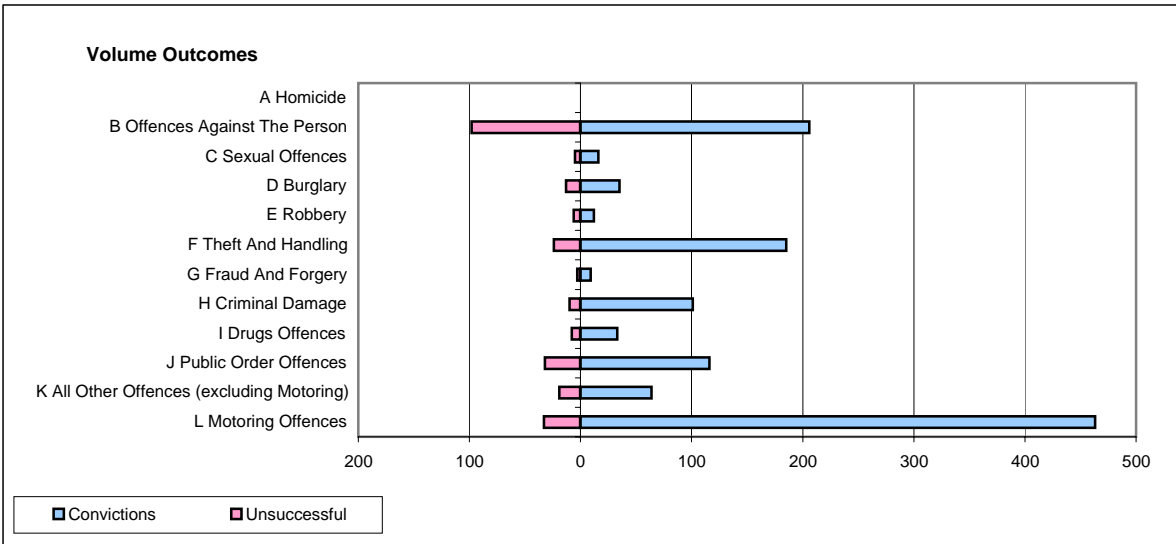
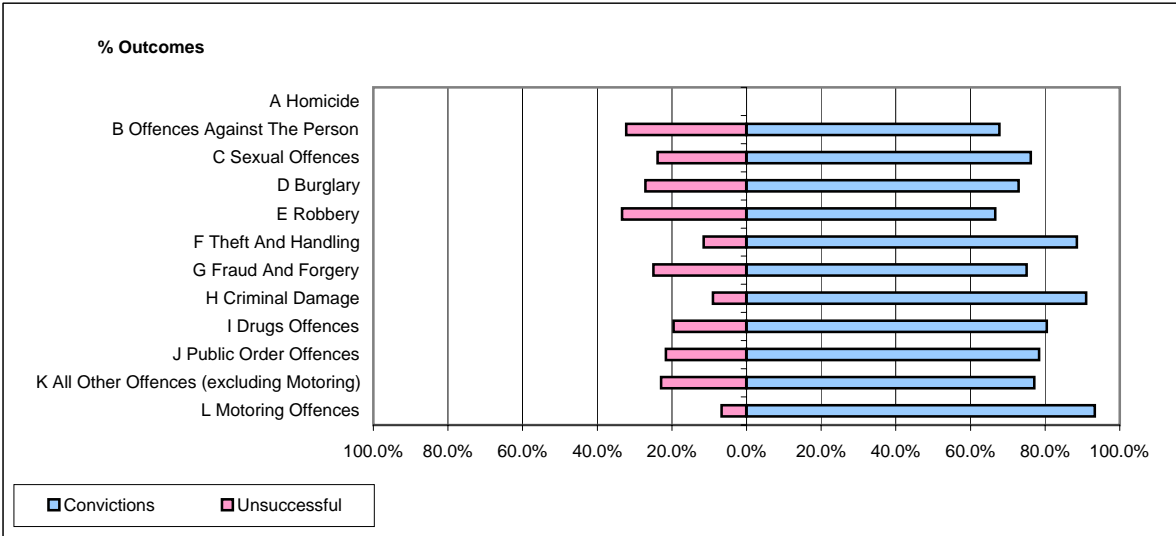


CPS OUTCOMES BY PRINCIPAL OFFENCE CATEGORY

January 2008

P08-Derbyshire



	Convictions		Unsuccessful	
	Number of Defendants	%	Number of Defendants	%
A Homicide	0	0	0	0
B Offences Against The Person	206	67.8%	98	32.2%
C Sexual Offences	16	76.2%	5	23.8%
D Burglary	35	72.9%	13	27.1%
E Robbery	12	66.7%	6	33.3%
F Theft And Handling	185	88.5%	24	11.5%
G Fraud And Forgery	9	75.0%	3	25.0%
H Criminal Damage	101	91.0%	10	9.0%
I Drugs Offences	33	80.5%	8	19.5%
J Public Order Offences	116	78.4%	32	21.6%
K All Other Offences (excluding Motoring)	64	77.1%	19	22.9%
L Motoring Offences	463	93.3%	33	6.7%
Admin Finalisations	0	0.0%	18	100.0%
TOTAL	1,240	82.2%	269	17.8%