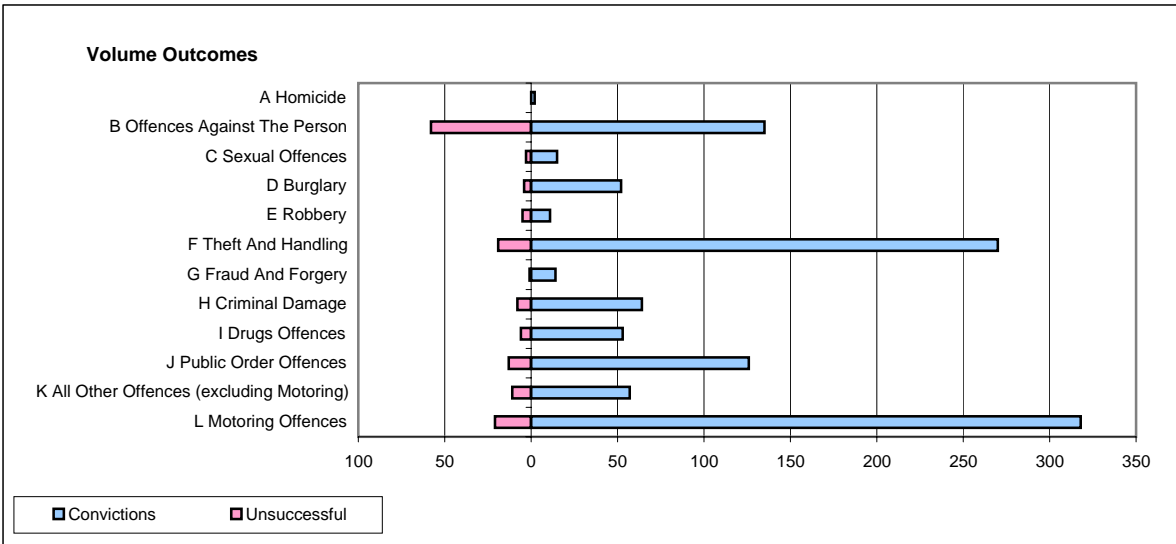
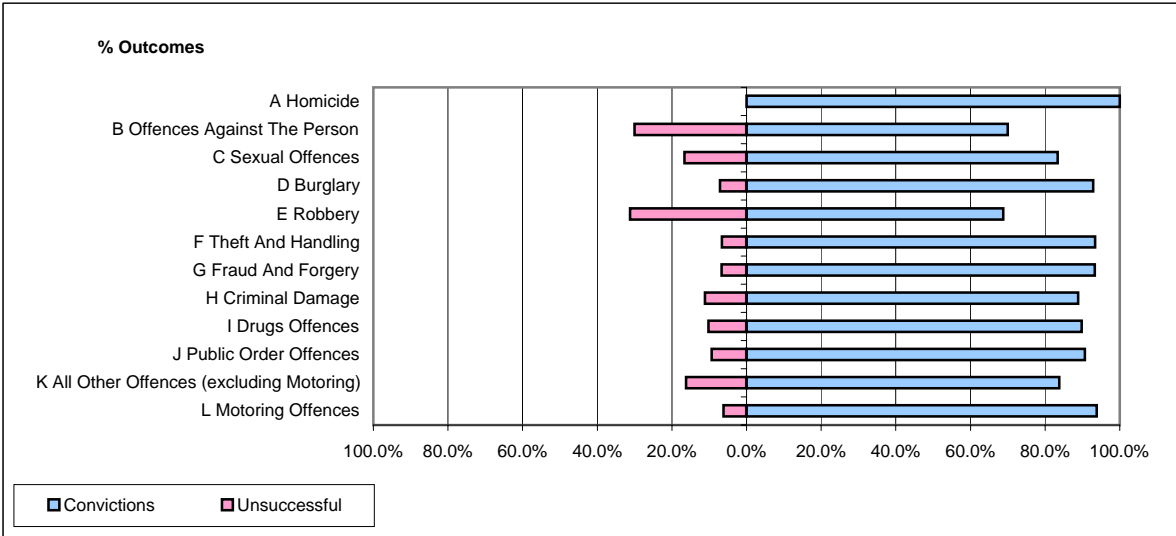


**CPS OUTCOMES BY PRINCIPAL OFFENCE CATEGORY**

**January 2008**

**P06-Cleveland**



	Convictions		Unsuccessful	
	Number of Defendants	%	Number of Defendants	%
<b>A Homicide</b>	<b>2</b>	<b>100.0%</b>	<b>0</b>	<b>0.0%</b>
<b>B Offences Against The Person</b>	<b>135</b>	<b>69.9%</b>	<b>58</b>	<b>30.1%</b>
<b>C Sexual Offences</b>	<b>15</b>	<b>83.3%</b>	<b>3</b>	<b>16.7%</b>
<b>D Burglary</b>	<b>52</b>	<b>92.9%</b>	<b>4</b>	<b>7.1%</b>
<b>E Robbery</b>	<b>11</b>	<b>68.8%</b>	<b>5</b>	<b>31.3%</b>
<b>F Theft And Handling</b>	<b>270</b>	<b>93.4%</b>	<b>19</b>	<b>6.6%</b>
<b>G Fraud And Forgery</b>	<b>14</b>	<b>93.3%</b>	<b>1</b>	<b>6.7%</b>
<b>H Criminal Damage</b>	<b>64</b>	<b>88.9%</b>	<b>8</b>	<b>11.1%</b>
<b>I Drugs Offences</b>	<b>53</b>	<b>89.8%</b>	<b>6</b>	<b>10.2%</b>
<b>J Public Order Offences</b>	<b>126</b>	<b>90.6%</b>	<b>13</b>	<b>9.4%</b>
<b>K All Other Offences (excluding Motoring)</b>	<b>57</b>	<b>83.8%</b>	<b>11</b>	<b>16.2%</b>
<b>L Motoring Offences</b>	<b>318</b>	<b>93.8%</b>	<b>21</b>	<b>6.2%</b>
<b>Admin Finalisations</b>	<b>0</b>	<b>0.0%</b>	<b>24</b>	<b>100.0%</b>
<b>TOTAL</b>	<b>1,117</b>	<b>86.6%</b>	<b>173</b>	<b>13.4%</b>