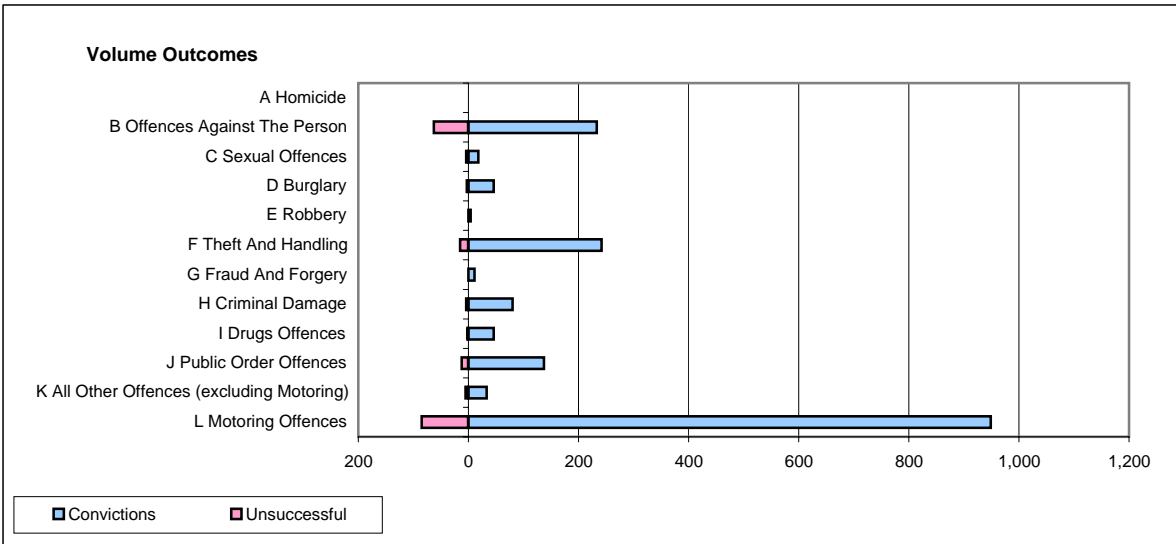
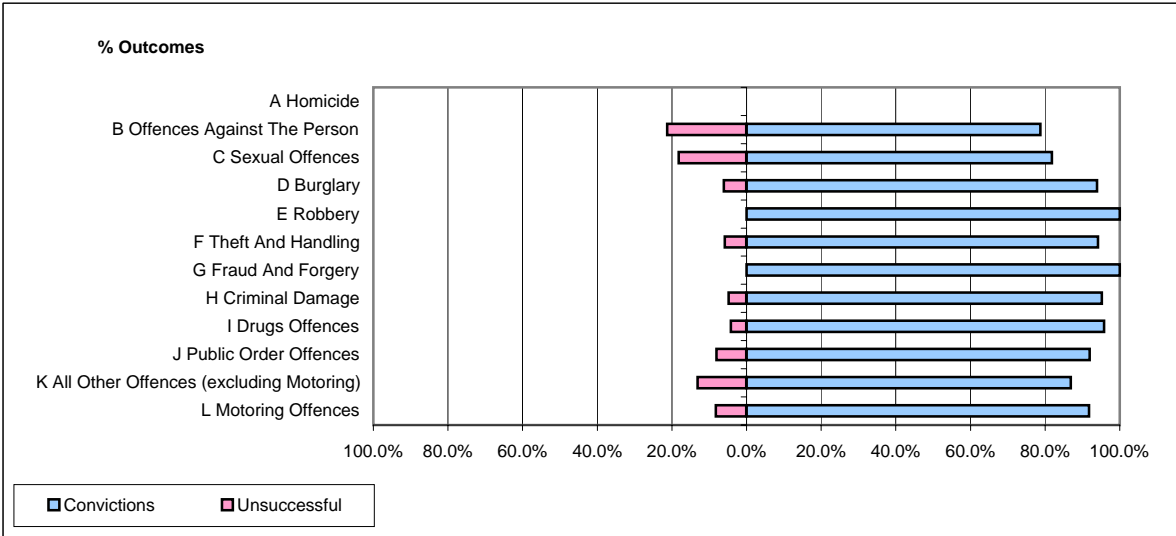


**CPS OUTCOMES BY PRINCIPAL OFFENCE CATEGORY**

January 2008

**P04-Cheshire**



	Convictions		Unsuccessful	
	Number of Defendants	%	Number of Defendants	%
<b>A Homicide</b>	<b>0</b>	<b>0</b>	<b>0</b>	<b>0</b>
<b>B Offences Against The Person</b>	<b>233</b>	<b>78.7%</b>	<b>63</b>	<b>21.3%</b>
<b>C Sexual Offences</b>	<b>18</b>	<b>81.8%</b>	<b>4</b>	<b>18.2%</b>
<b>D Burglary</b>	<b>46</b>	<b>93.9%</b>	<b>3</b>	<b>6.1%</b>
<b>E Robbery</b>	<b>4</b>	<b>100.0%</b>	<b>0</b>	<b>0.0%</b>
<b>F Theft And Handling</b>	<b>242</b>	<b>94.2%</b>	<b>15</b>	<b>5.8%</b>
<b>G Fraud And Forgery</b>	<b>11</b>	<b>100.0%</b>	<b>0</b>	<b>0.0%</b>
<b>H Criminal Damage</b>	<b>80</b>	<b>95.2%</b>	<b>4</b>	<b>4.8%</b>
<b>I Drugs Offences</b>	<b>46</b>	<b>95.8%</b>	<b>2</b>	<b>4.2%</b>
<b>J Public Order Offences</b>	<b>137</b>	<b>91.9%</b>	<b>12</b>	<b>8.1%</b>
<b>K All Other Offences (excluding Motoring)</b>	<b>33</b>	<b>86.8%</b>	<b>5</b>	<b>13.2%</b>
<b>L Motoring Offences</b>	<b>949</b>	<b>91.8%</b>	<b>85</b>	<b>8.2%</b>
<b>Admin Finalisations</b>	<b>0</b>	<b>0.0%</b>	<b>17</b>	<b>100.0%</b>
<b>TOTAL</b>	<b>1,799</b>	<b>89.5%</b>	<b>210</b>	<b>10.5%</b>