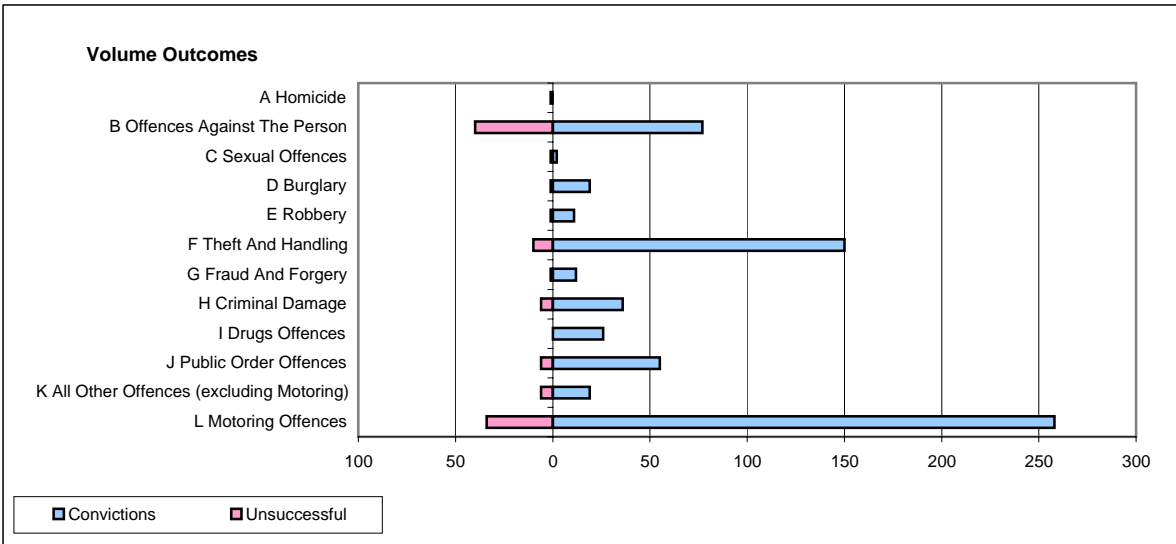
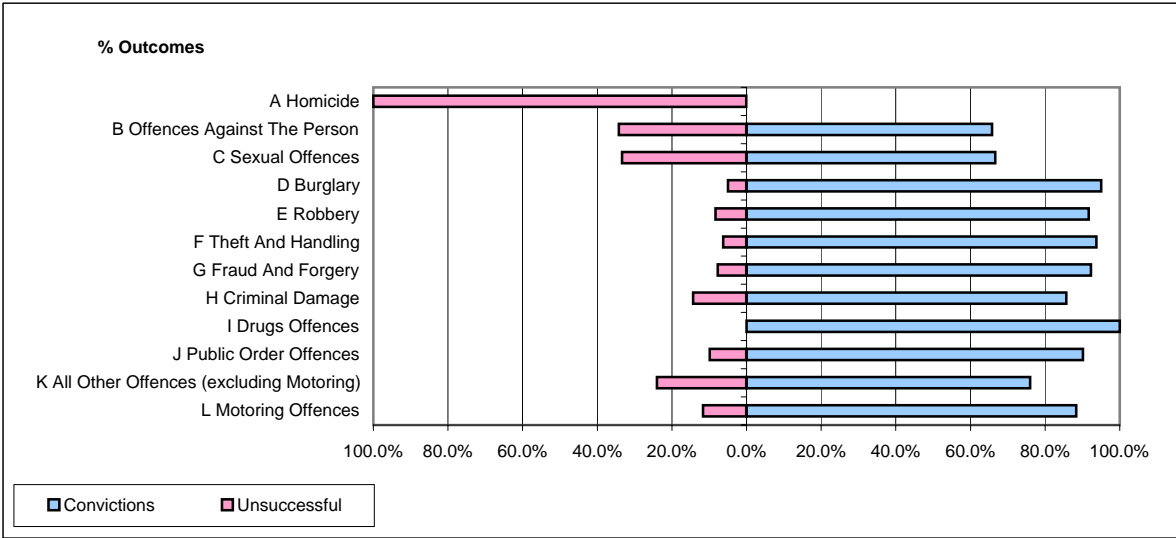


CPS OUTCOMES BY PRINCIPAL OFFENCE CATEGORY

January 2008

P02-Bedfordshire



	Convictions		Unsuccessful	
	Number of Defendants	%	Number of Defendants	%
A Homicide	0	0.0%	1	100.0%
B Offences Against The Person	77	65.8%	40	34.2%
C Sexual Offences	2	66.7%	1	33.3%
D Burglary	19	95.0%	1	5.0%
E Robbery	11	91.7%	1	8.3%
F Theft And Handling	150	93.8%	10	6.3%
G Fraud And Forgery	12	92.3%	1	7.7%
H Criminal Damage	36	85.7%	6	14.3%
I Drugs Offences	26	100.0%	0	0.0%
J Public Order Offences	55	90.2%	6	9.8%
K All Other Offences (excluding Motoring)	19	76.0%	6	24.0%
L Motoring Offences	258	88.4%	34	11.6%
Admin Finalisations	0	0.0%	16	100.0%
TOTAL	665	84.4%	123	15.6%