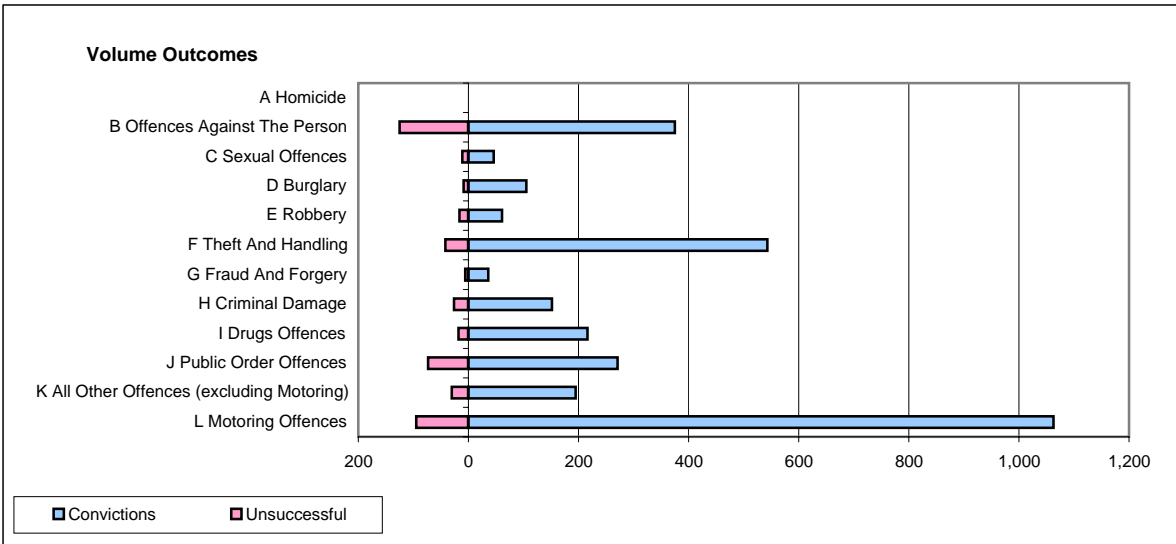
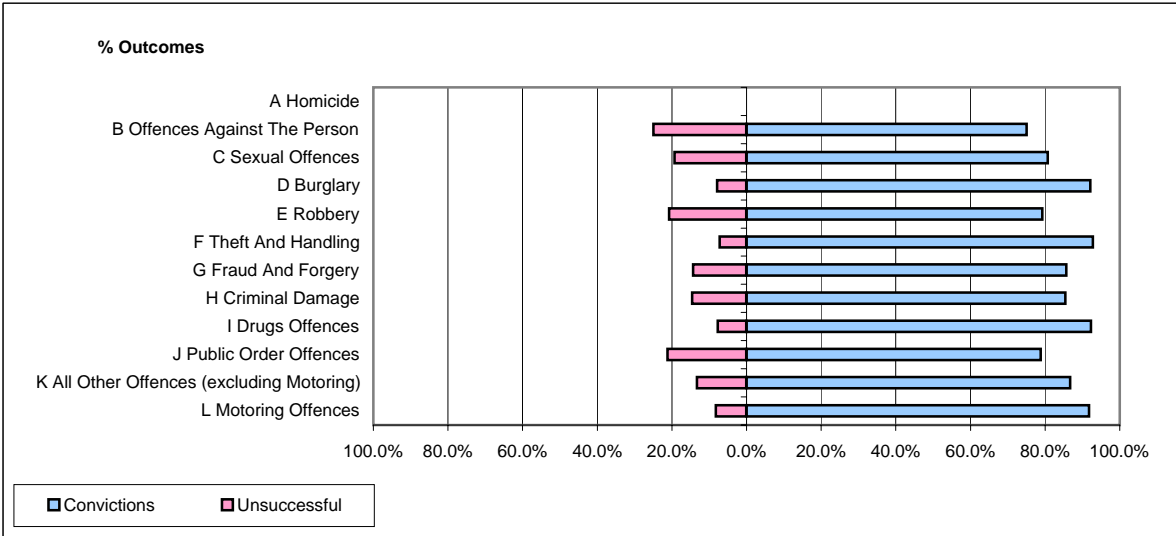


CPS OUTCOMES BY PRINCIPAL OFFENCE CATEGORY

December 2007

P41-WestMidlands



	Convictions		Unsuccessful	
	Number of Defendants	%	Number of Defendants	%
A Homicide	0	0	0	0
B Offences Against The Person	375	75.0%	125	25.0%
C Sexual Offences	46	80.7%	11	19.3%
D Burglary	105	92.1%	9	7.9%
E Robbery	61	79.2%	16	20.8%
F Theft And Handling	543	92.8%	42	7.2%
G Fraud And Forgery	36	85.7%	6	14.3%
H Criminal Damage	152	85.4%	26	14.6%
I Drugs Offences	216	92.3%	18	7.7%
J Public Order Offences	271	78.8%	73	21.2%
K All Other Offences (excluding Motoring)	195	86.7%	30	13.3%
L Motoring Offences	1,063	91.8%	95	8.2%
Admin Finalisations	0	0.0%	79	100.0%
TOTAL	3,063	85.2%	530	14.8%