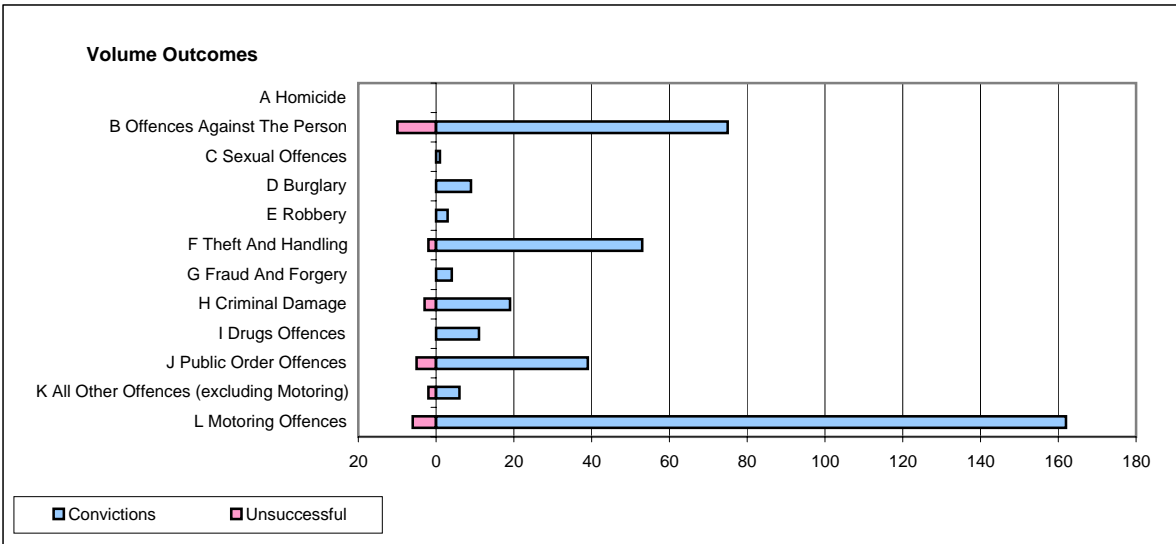
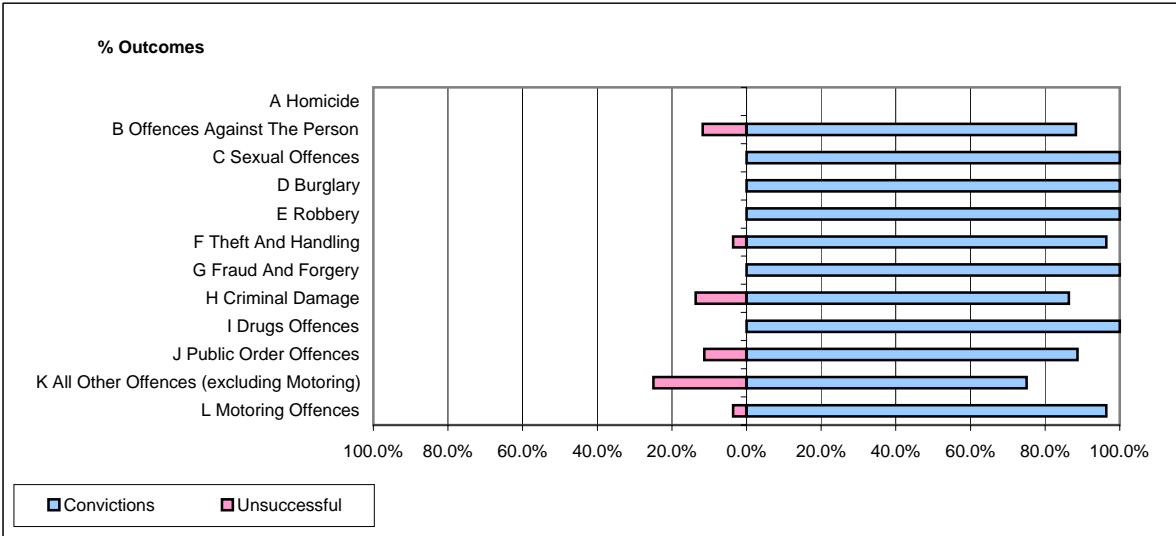


**CPS OUTCOMES BY PRINCIPAL OFFENCE CATEGORY**

**December 2007**

**P39-Warwickshire**



	Convictions		Unsuccessful	
	Number of Defendants	%	Number of Defendants	%
<b>A Homicide</b>	<b>0</b>	<b>0</b>	<b>0</b>	<b>0</b>
<b>B Offences Against The Person</b>	<b>75</b>	<b>88.2%</b>	<b>10</b>	<b>11.8%</b>
<b>C Sexual Offences</b>	<b>1</b>	<b>100.0%</b>	<b>0</b>	<b>0.0%</b>
<b>D Burglary</b>	<b>9</b>	<b>100.0%</b>	<b>0</b>	<b>0.0%</b>
<b>E Robbery</b>	<b>3</b>	<b>100.0%</b>	<b>0</b>	<b>0.0%</b>
<b>F Theft And Handling</b>	<b>53</b>	<b>96.4%</b>	<b>2</b>	<b>3.6%</b>
<b>G Fraud And Forgery</b>	<b>4</b>	<b>100.0%</b>	<b>0</b>	<b>0.0%</b>
<b>H Criminal Damage</b>	<b>19</b>	<b>86.4%</b>	<b>3</b>	<b>13.6%</b>
<b>I Drugs Offences</b>	<b>11</b>	<b>100.0%</b>	<b>0</b>	<b>0.0%</b>
<b>J Public Order Offences</b>	<b>39</b>	<b>88.6%</b>	<b>5</b>	<b>11.4%</b>
<b>K All Other Offences (excluding Motoring)</b>	<b>6</b>	<b>75.0%</b>	<b>2</b>	<b>25.0%</b>
<b>L Motoring Offences</b>	<b>162</b>	<b>96.4%</b>	<b>6</b>	<b>3.6%</b>
<b>Admin Finalisations</b>	<b>0</b>	<b>0.0%</b>	<b>10</b>	<b>100.0%</b>
<b>TOTAL</b>	<b>382</b>	<b>91.0%</b>	<b>38</b>	<b>9.0%</b>