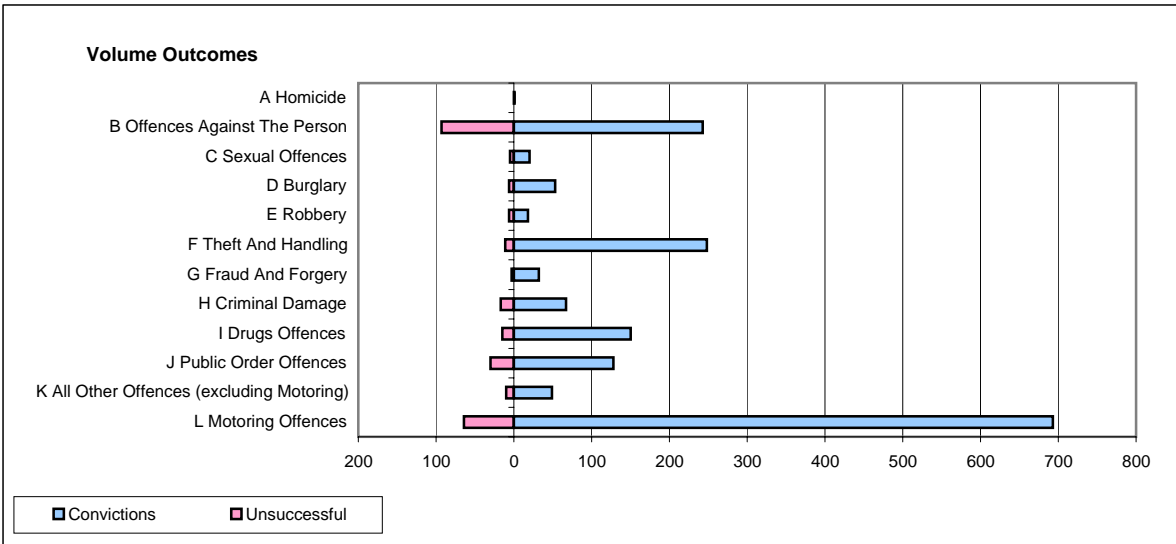
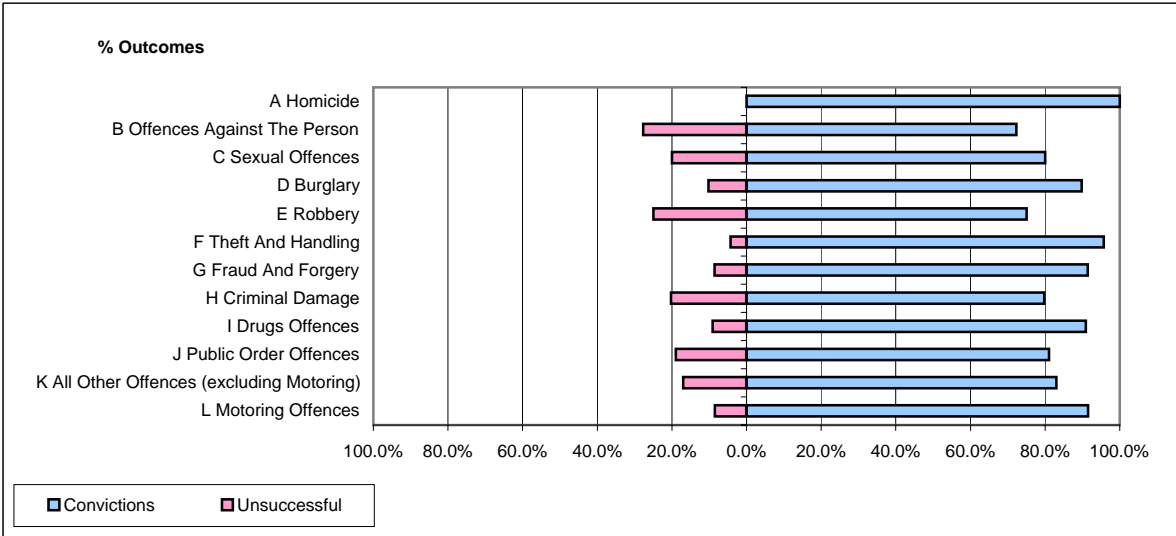


**CPS OUTCOMES BY PRINCIPAL OFFENCE CATEGORY**

December 2007

**P38-ThamesValley**



	Convictions		Unsuccessful	
	Number of Defendants	%	Number of Defendants	%
<b>A Homicide</b>	<b>1</b>	<b>100.0%</b>	<b>0</b>	<b>0.0%</b>
<b>B Offences Against The Person</b>	<b>243</b>	<b>72.3%</b>	<b>93</b>	<b>27.7%</b>
<b>C Sexual Offences</b>	<b>20</b>	<b>80.0%</b>	<b>5</b>	<b>20.0%</b>
<b>D Burglary</b>	<b>53</b>	<b>89.8%</b>	<b>6</b>	<b>10.2%</b>
<b>E Robbery</b>	<b>18</b>	<b>75.0%</b>	<b>6</b>	<b>25.0%</b>
<b>F Theft And Handling</b>	<b>248</b>	<b>95.8%</b>	<b>11</b>	<b>4.2%</b>
<b>G Fraud And Forgery</b>	<b>32</b>	<b>91.4%</b>	<b>3</b>	<b>8.6%</b>
<b>H Criminal Damage</b>	<b>67</b>	<b>79.8%</b>	<b>17</b>	<b>20.2%</b>
<b>I Drugs Offences</b>	<b>150</b>	<b>90.9%</b>	<b>15</b>	<b>9.1%</b>
<b>J Public Order Offences</b>	<b>128</b>	<b>81.0%</b>	<b>30</b>	<b>19.0%</b>
<b>K All Other Offences (excluding Motoring)</b>	<b>49</b>	<b>83.1%</b>	<b>10</b>	<b>16.9%</b>
<b>L Motoring Offences</b>	<b>693</b>	<b>91.5%</b>	<b>64</b>	<b>8.5%</b>
<b>Admin Finalisations</b>	<b>0</b>	<b>0.0%</b>	<b>96</b>	<b>100.0%</b>
<b>TOTAL</b>	<b>1,702</b>	<b>82.7%</b>	<b>356</b>	<b>17.3%</b>