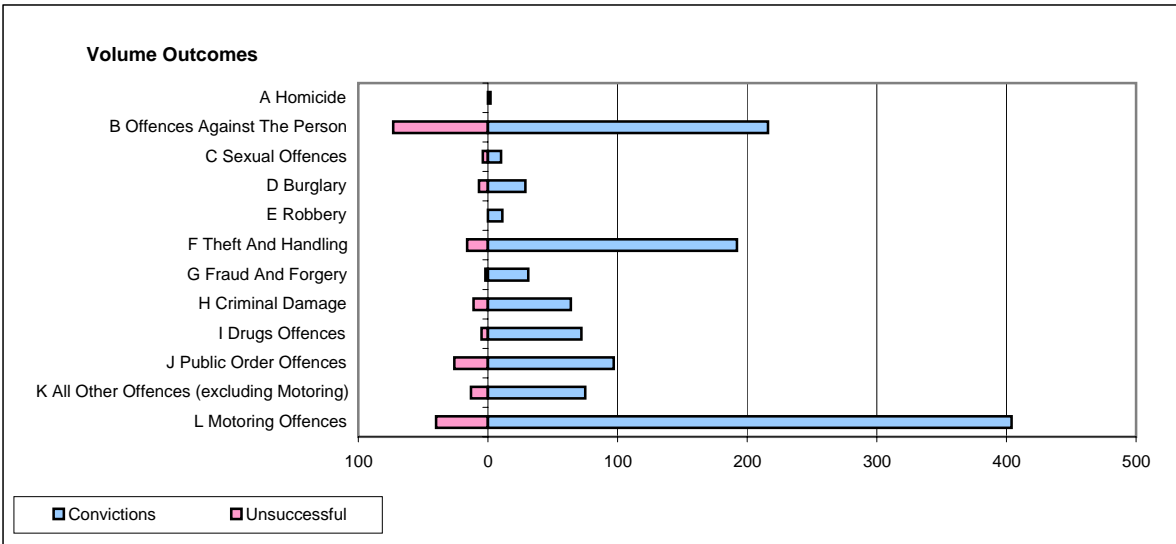
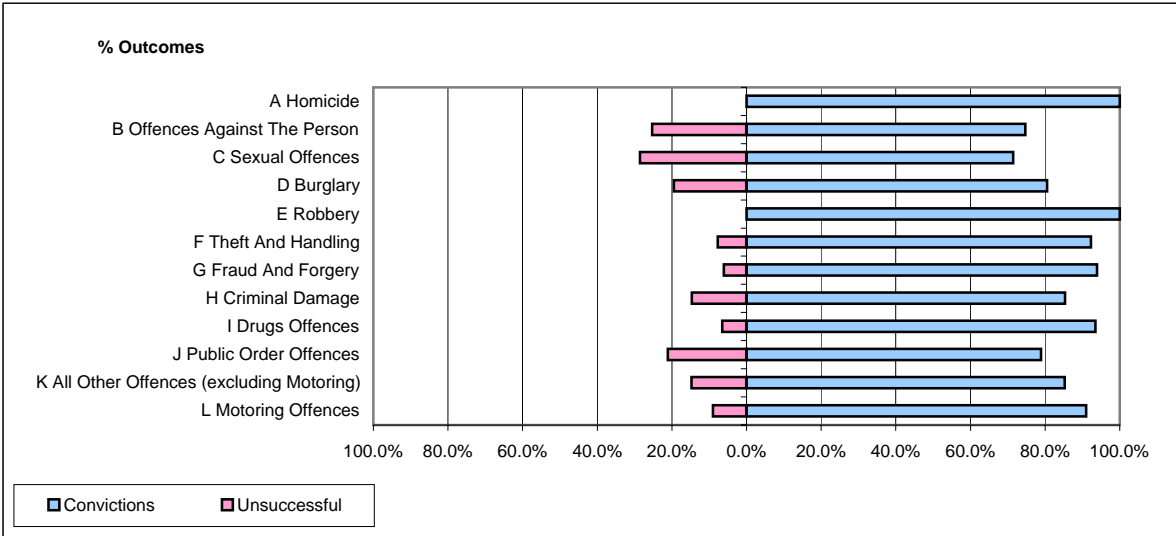


**CPS OUTCOMES BY PRINCIPAL OFFENCE CATEGORY**

December 2007

**P37-Sussex**



	Convictions		Unsuccessful	
	Number of Defendants	%	Number of Defendants	%
<b>A Homicide</b>	<b>2</b>	<b>100.0%</b>	<b>0</b>	<b>0.0%</b>
<b>B Offences Against The Person</b>	<b>216</b>	<b>74.7%</b>	<b>73</b>	<b>25.3%</b>
<b>C Sexual Offences</b>	<b>10</b>	<b>71.4%</b>	<b>4</b>	<b>28.6%</b>
<b>D Burglary</b>	<b>29</b>	<b>80.6%</b>	<b>7</b>	<b>19.4%</b>
<b>E Robbery</b>	<b>11</b>	<b>100.0%</b>	<b>0</b>	<b>0.0%</b>
<b>F Theft And Handling</b>	<b>192</b>	<b>92.3%</b>	<b>16</b>	<b>7.7%</b>
<b>G Fraud And Forgery</b>	<b>31</b>	<b>93.9%</b>	<b>2</b>	<b>6.1%</b>
<b>H Criminal Damage</b>	<b>64</b>	<b>85.3%</b>	<b>11</b>	<b>14.7%</b>
<b>I Drugs Offences</b>	<b>72</b>	<b>93.5%</b>	<b>5</b>	<b>6.5%</b>
<b>J Public Order Offences</b>	<b>97</b>	<b>78.9%</b>	<b>26</b>	<b>21.1%</b>
<b>K All Other Offences (excluding Motoring)</b>	<b>75</b>	<b>85.2%</b>	<b>13</b>	<b>14.8%</b>
<b>L Motoring Offences</b>	<b>404</b>	<b>91.0%</b>	<b>40</b>	<b>9.0%</b>
<b>Admin Finalisations</b>	<b>0</b>	<b>0.0%</b>	<b>31</b>	<b>100.0%</b>
<b>TOTAL</b>	<b>1,203</b>	<b>84.1%</b>	<b>228</b>	<b>15.9%</b>