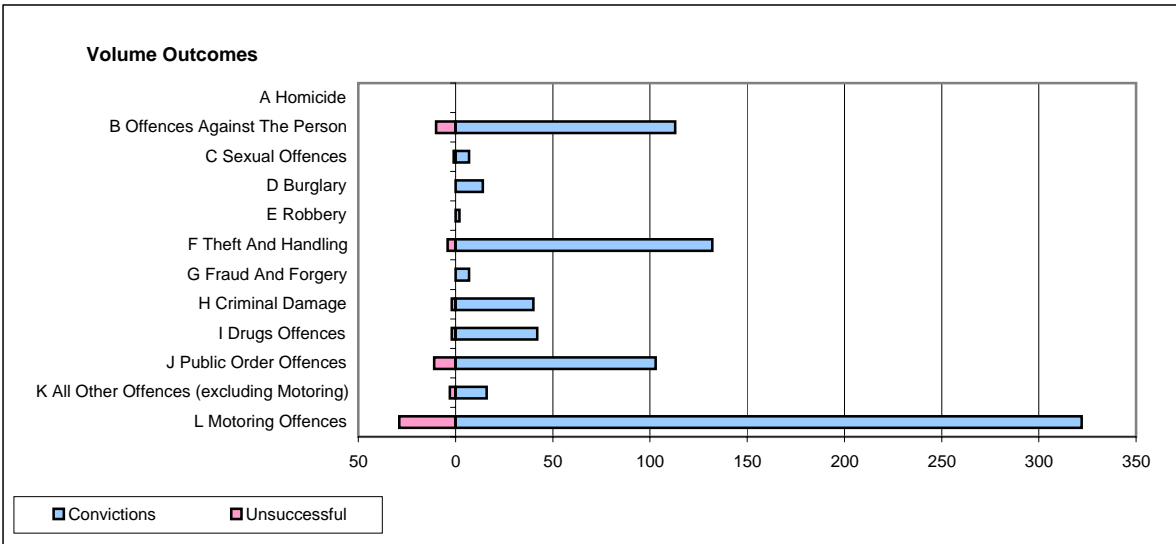
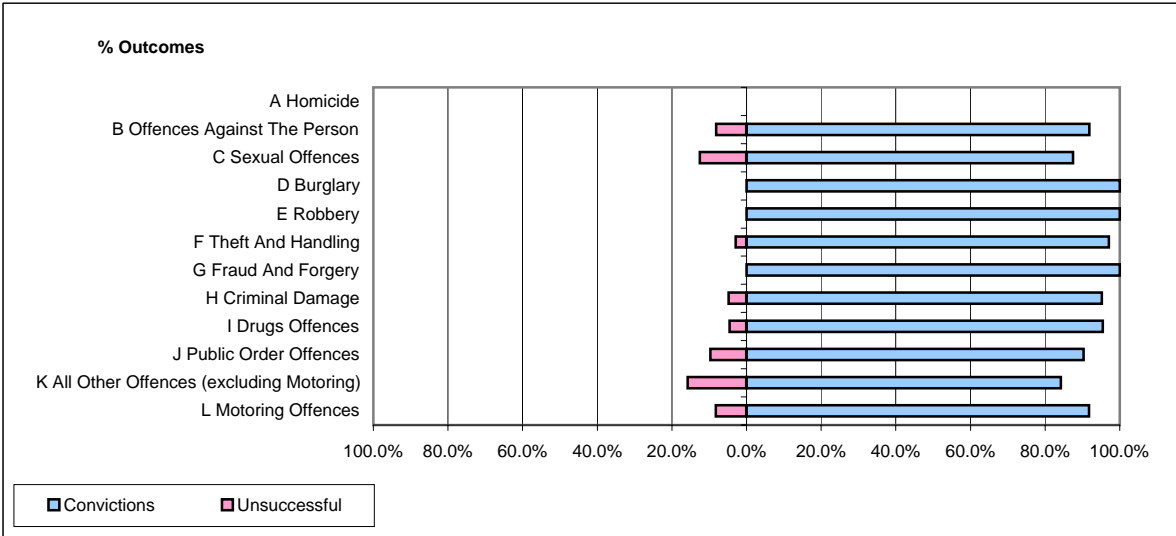


CPS OUTCOMES BY PRINCIPAL OFFENCE CATEGORY

December 2007

P35-Suffolk



	Convictions		Unsuccessful	
	Number of Defendants	%	Number of Defendants	%
A Homicide	0	0	0	0
B Offences Against The Person	113	91.9%	10	8.1%
C Sexual Offences	7	87.5%	1	12.5%
D Burglary	14	100.0%	0	0.0%
E Robbery	2	100.0%	0	0.0%
F Theft And Handling	132	97.1%	4	2.9%
G Fraud And Forgery	7	100.0%	0	0.0%
H Criminal Damage	40	95.2%	2	4.8%
I Drugs Offences	42	95.5%	2	4.5%
J Public Order Offences	103	90.4%	11	9.6%
K All Other Offences (excluding Motoring)	16	84.2%	3	15.8%
L Motoring Offences	322	91.7%	29	8.3%
Admin Finalisations	0	0.0%	15	100.0%
TOTAL	798	91.2%	77	8.8%