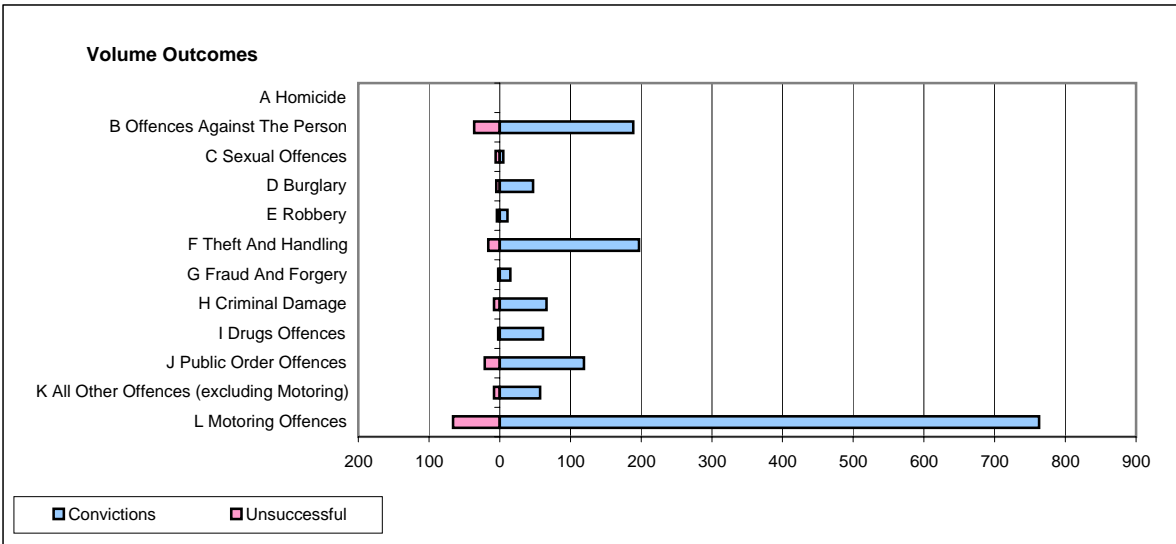
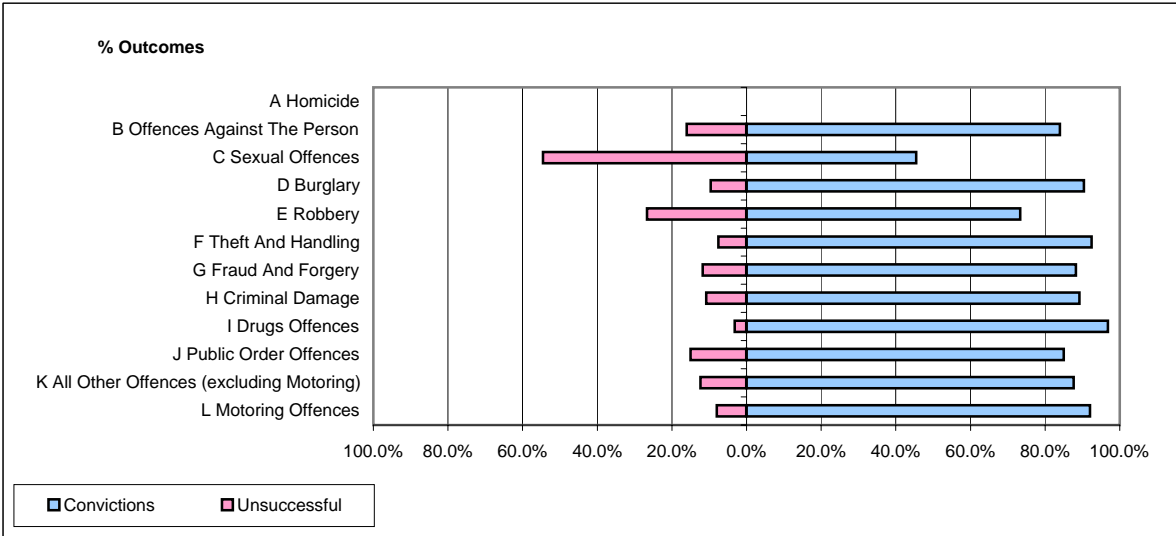


**CPS OUTCOMES BY PRINCIPAL OFFENCE CATEGORY**

**December 2007**

**P34-Staffordshire**



	Convictions		Unsuccessful	
	Number of Defendants	%	Number of Defendants	%
<b>A Homicide</b>	<b>0</b>	<b>0</b>	<b>0</b>	<b>0</b>
<b>B Offences Against The Person</b>	<b>189</b>	<b>84.0%</b>	<b>36</b>	<b>16.0%</b>
<b>C Sexual Offences</b>	<b>5</b>	<b>45.5%</b>	<b>6</b>	<b>54.5%</b>
<b>D Burglary</b>	<b>47</b>	<b>90.4%</b>	<b>5</b>	<b>9.6%</b>
<b>E Robbery</b>	<b>11</b>	<b>73.3%</b>	<b>4</b>	<b>26.7%</b>
<b>F Theft And Handling</b>	<b>197</b>	<b>92.5%</b>	<b>16</b>	<b>7.5%</b>
<b>G Fraud And Forgery</b>	<b>15</b>	<b>88.2%</b>	<b>2</b>	<b>11.8%</b>
<b>H Criminal Damage</b>	<b>66</b>	<b>89.2%</b>	<b>8</b>	<b>10.8%</b>
<b>I Drugs Offences</b>	<b>61</b>	<b>96.8%</b>	<b>2</b>	<b>3.2%</b>
<b>J Public Order Offences</b>	<b>119</b>	<b>85.0%</b>	<b>21</b>	<b>15.0%</b>
<b>K All Other Offences (excluding Motoring)</b>	<b>57</b>	<b>87.7%</b>	<b>8</b>	<b>12.3%</b>
<b>L Motoring Offences</b>	<b>763</b>	<b>92.0%</b>	<b>66</b>	<b>8.0%</b>
<b>Admin Finalisations</b>	<b>0</b>	<b>0.0%</b>	<b>24</b>	<b>100.0%</b>
<b>TOTAL</b>	<b>1,530</b>	<b>88.5%</b>	<b>198</b>	<b>11.5%</b>