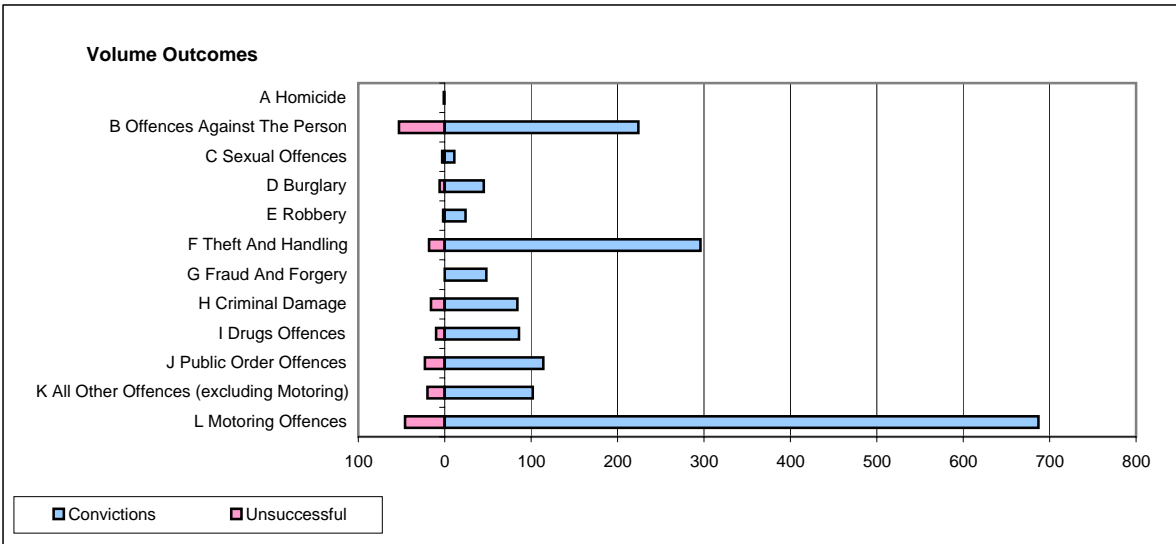
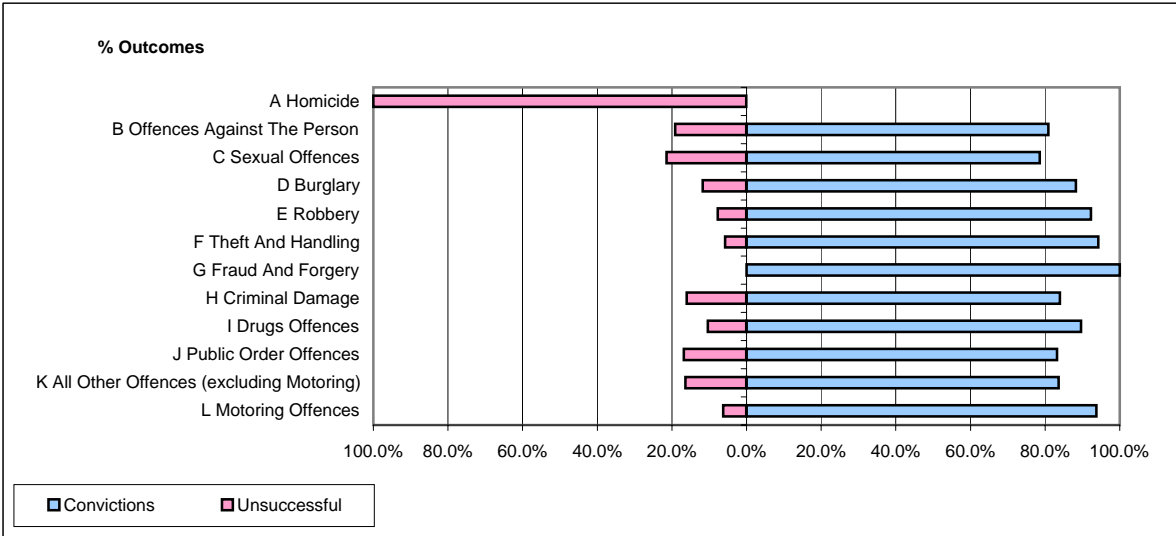


**CPS OUTCOMES BY PRINCIPAL OFFENCE CATEGORY**

**December 2007**

**P33-SouthYorkshire**



	Convictions		Unsuccessful	
	Number of Defendants	%	Number of Defendants	%
<b>A Homicide</b>	<b>0</b>	<b>0.0%</b>	<b>1</b>	<b>100.0%</b>
<b>B Offences Against The Person</b>	<b>224</b>	<b>80.9%</b>	<b>53</b>	<b>19.1%</b>
<b>C Sexual Offences</b>	<b>11</b>	<b>78.6%</b>	<b>3</b>	<b>21.4%</b>
<b>D Burglary</b>	<b>45</b>	<b>88.2%</b>	<b>6</b>	<b>11.8%</b>
<b>E Robbery</b>	<b>24</b>	<b>92.3%</b>	<b>2</b>	<b>7.7%</b>
<b>F Theft And Handling</b>	<b>296</b>	<b>94.3%</b>	<b>18</b>	<b>5.7%</b>
<b>G Fraud And Forgery</b>	<b>48</b>	<b>100.0%</b>	<b>0</b>	<b>0.0%</b>
<b>H Criminal Damage</b>	<b>84</b>	<b>84.0%</b>	<b>16</b>	<b>16.0%</b>
<b>I Drugs Offences</b>	<b>86</b>	<b>89.6%</b>	<b>10</b>	<b>10.4%</b>
<b>J Public Order Offences</b>	<b>114</b>	<b>83.2%</b>	<b>23</b>	<b>16.8%</b>
<b>K All Other Offences (excluding Motoring)</b>	<b>102</b>	<b>83.6%</b>	<b>20</b>	<b>16.4%</b>
<b>L Motoring Offences</b>	<b>687</b>	<b>93.7%</b>	<b>46</b>	<b>6.3%</b>
<b>Admin Finalisations</b>	<b>0</b>	<b>0.0%</b>	<b>20</b>	<b>100.0%</b>
<b>TOTAL</b>	<b>1,721</b>	<b>88.8%</b>	<b>218</b>	<b>11.2%</b>