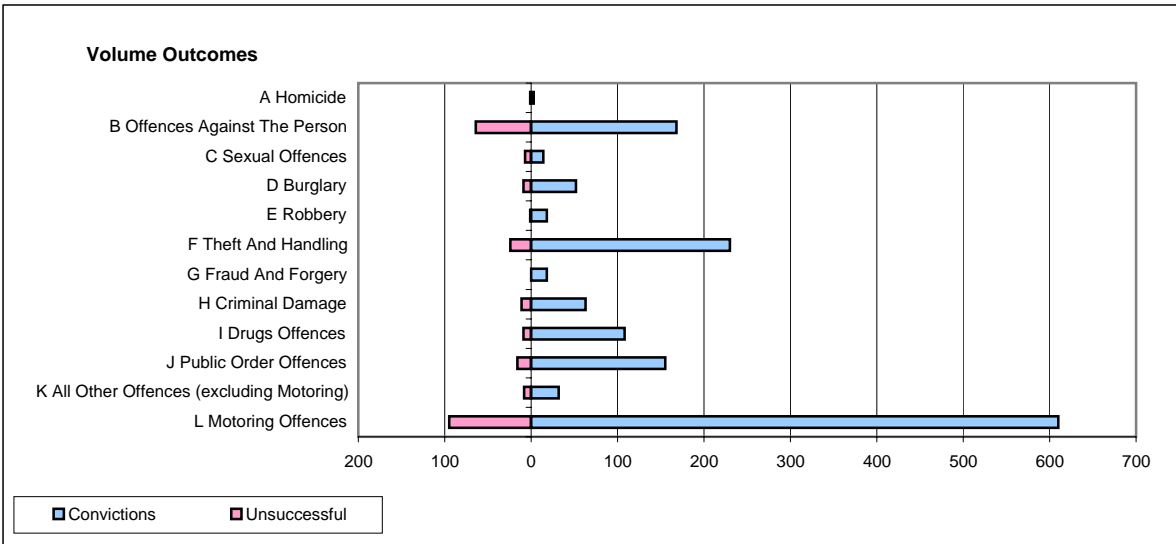
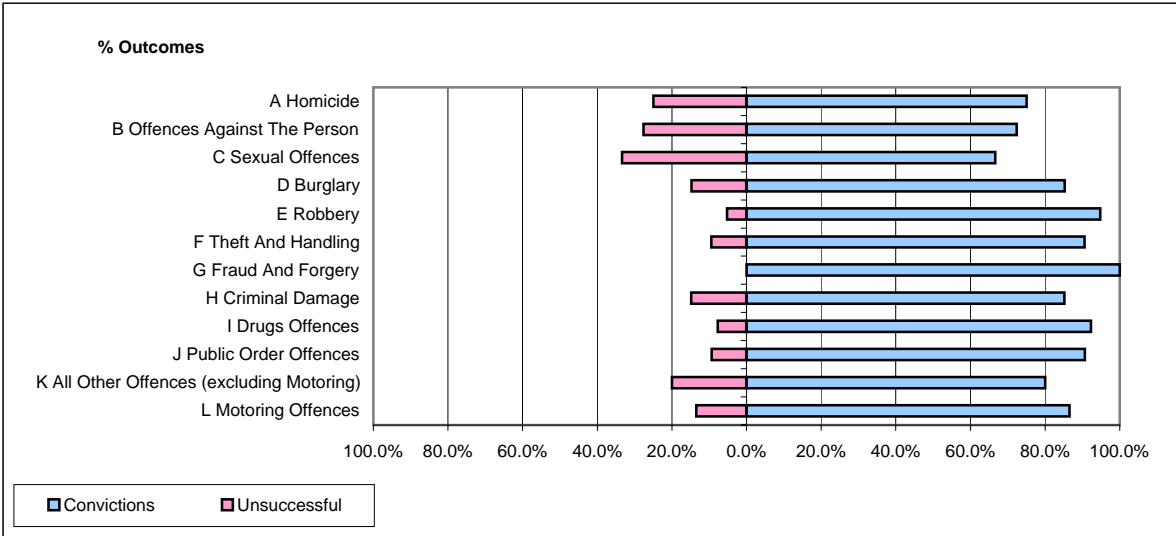


CPS OUTCOMES BY PRINCIPAL OFFENCE CATEGORY

December 2007

P32-SouthWales



	Convictions		Unsuccessful	
	Number of Defendants	%	Number of Defendants	%
A Homicide	3	75.0%	1	25.0%
B Offences Against The Person	168	72.4%	64	27.6%
C Sexual Offences	14	66.7%	7	33.3%
D Burglary	52	85.2%	9	14.8%
E Robbery	18	94.7%	1	5.3%
F Theft And Handling	230	90.6%	24	9.4%
G Fraud And Forgery	18	100.0%	0	0.0%
H Criminal Damage	63	85.1%	11	14.9%
I Drugs Offences	108	92.3%	9	7.7%
J Public Order Offences	155	90.6%	16	9.4%
K All Other Offences (excluding Motoring)	32	80.0%	8	20.0%
L Motoring Offences	610	86.5%	95	13.5%
Admin Finalisations	0	0.0%	55	100.0%
TOTAL	1,471	83.1%	300	16.9%