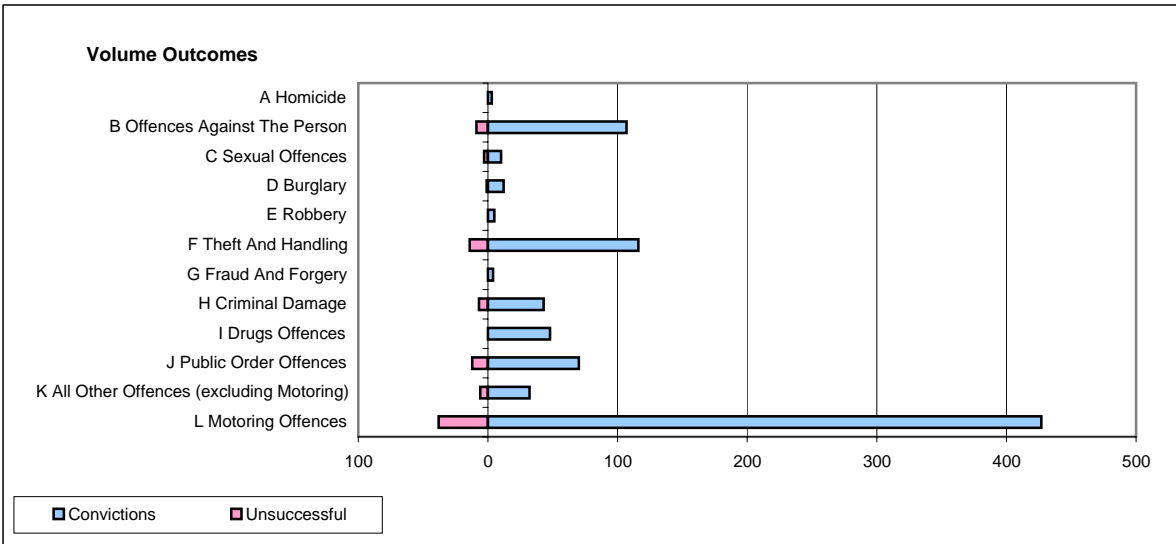
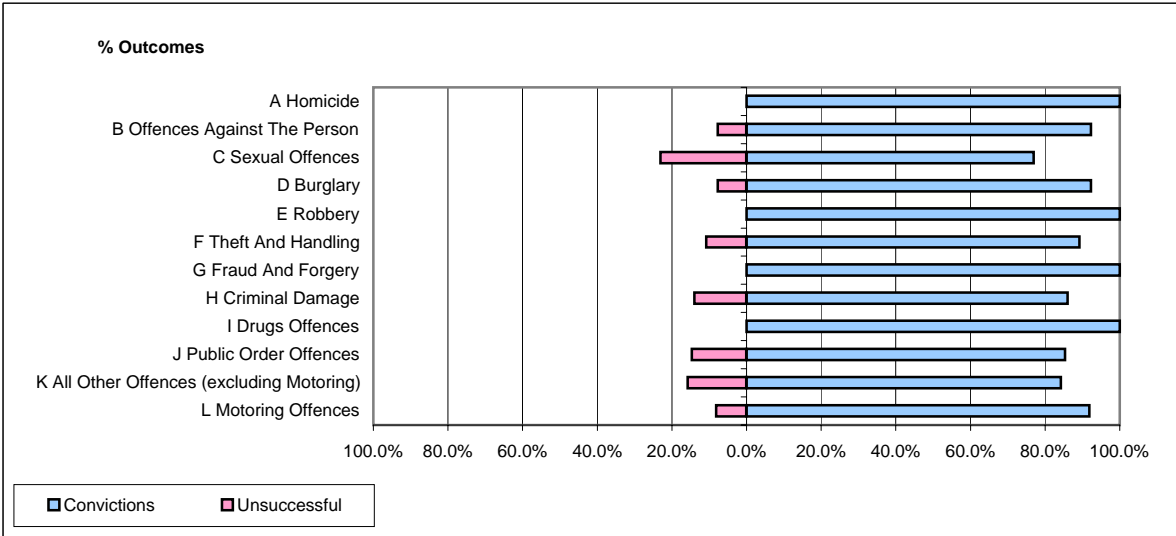


CPS OUTCOMES BY PRINCIPAL OFFENCE CATEGORY

December 2007

P26-Norfolk



	Convictions		Unsuccessful	
	Number of Defendants	%	Number of Defendants	%
A Homicide	3	100.0%	0	0.0%
B Offences Against The Person	107	92.2%	9	7.8%
C Sexual Offences	10	76.9%	3	23.1%
D Burglary	12	92.3%	1	7.7%
E Robbery	5	100.0%	0	0.0%
F Theft And Handling	116	89.2%	14	10.8%
G Fraud And Forgery	4	100.0%	0	0.0%
H Criminal Damage	43	86.0%	7	14.0%
I Drugs Offences	48	100.0%	0	0.0%
J Public Order Offences	70	85.4%	12	14.6%
K All Other Offences (excluding Motoring)	32	84.2%	6	15.8%
L Motoring Offences	427	91.8%	38	8.2%
Admin Finalisations	0	0.0%	30	100.0%
TOTAL	877	88.0%	120	12.0%