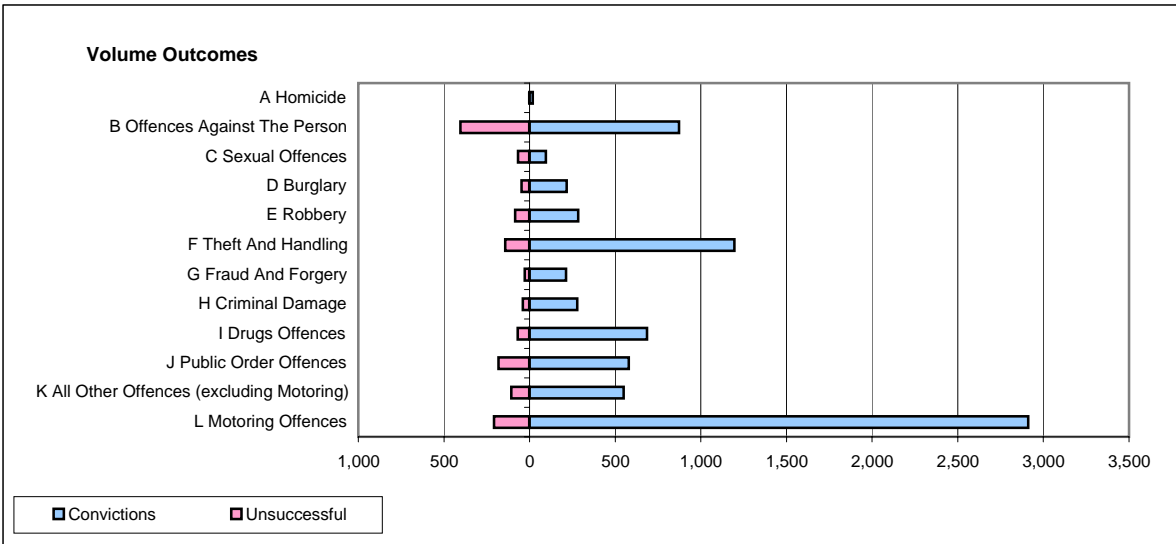
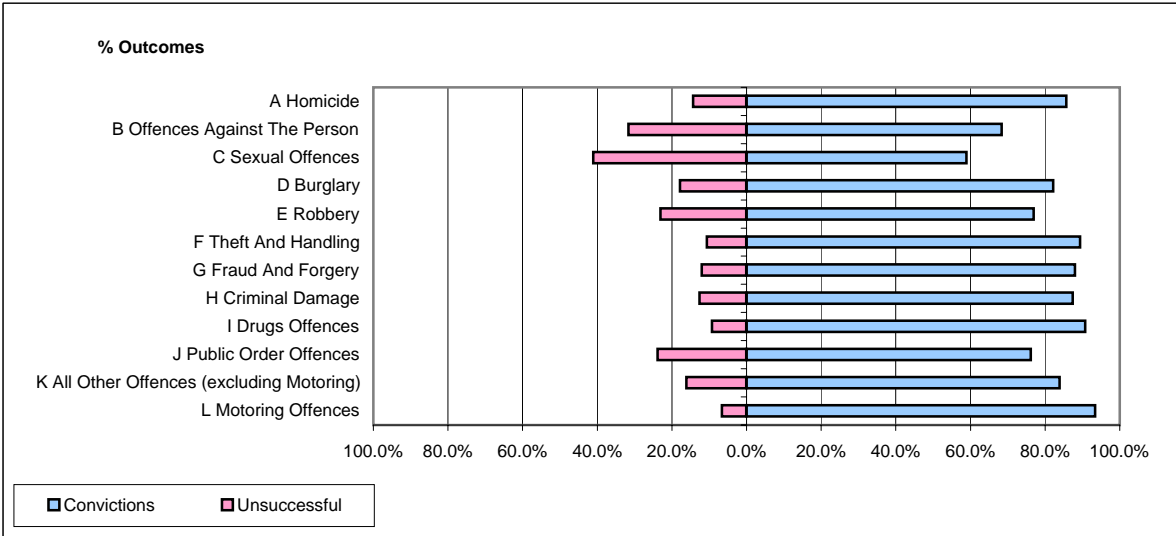


CPS OUTCOMES BY PRINCIPAL OFFENCE CATEGORY

December 2007

P25-Metropolitan&City



	Convictions		Unsuccessful	
	Number of Defendants	%	Number of Defendants	%
A Homicide	18	85.7%	3	14.3%
B Offences Against The Person	872	68.3%	404	31.7%
C Sexual Offences	96	58.9%	67	41.1%
D Burglary	217	82.2%	47	17.8%
E Robbery	284	77.0%	85	23.0%
F Theft And Handling	1,195	89.4%	142	10.6%
G Fraud And Forgery	213	88.0%	29	12.0%
H Criminal Damage	278	87.4%	40	12.6%
I Drugs Offences	686	90.7%	70	9.3%
J Public Order Offences	580	76.1%	182	23.9%
K All Other Offences (excluding Motoring)	550	83.8%	106	16.2%
L Motoring Offences	2,911	93.4%	207	6.6%
Admin Finalisations	0	0.0%	347	100.0%
TOTAL	7,900	82.0%	1,729	18.0%