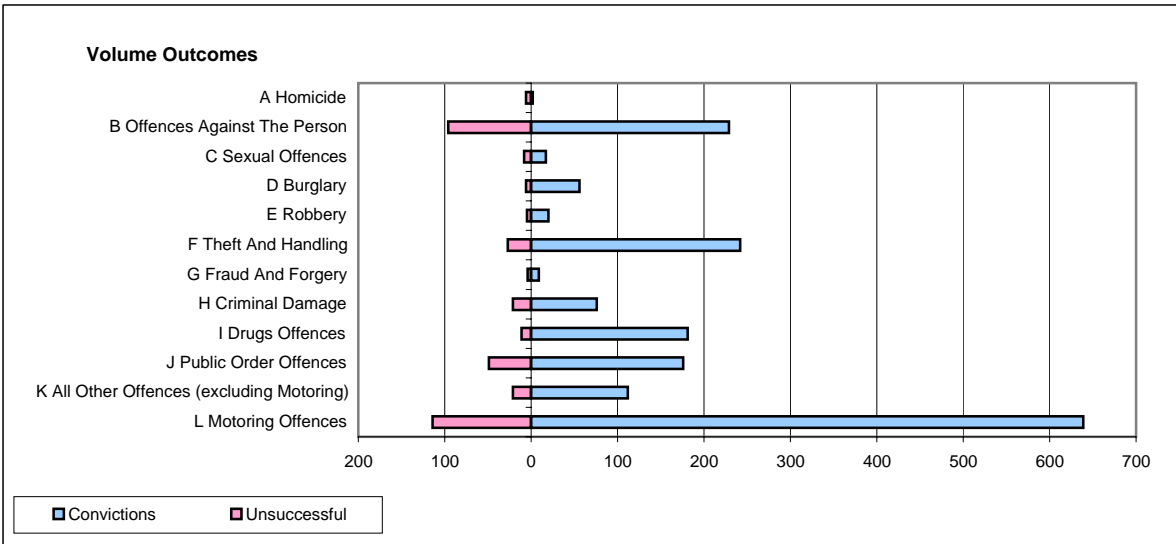
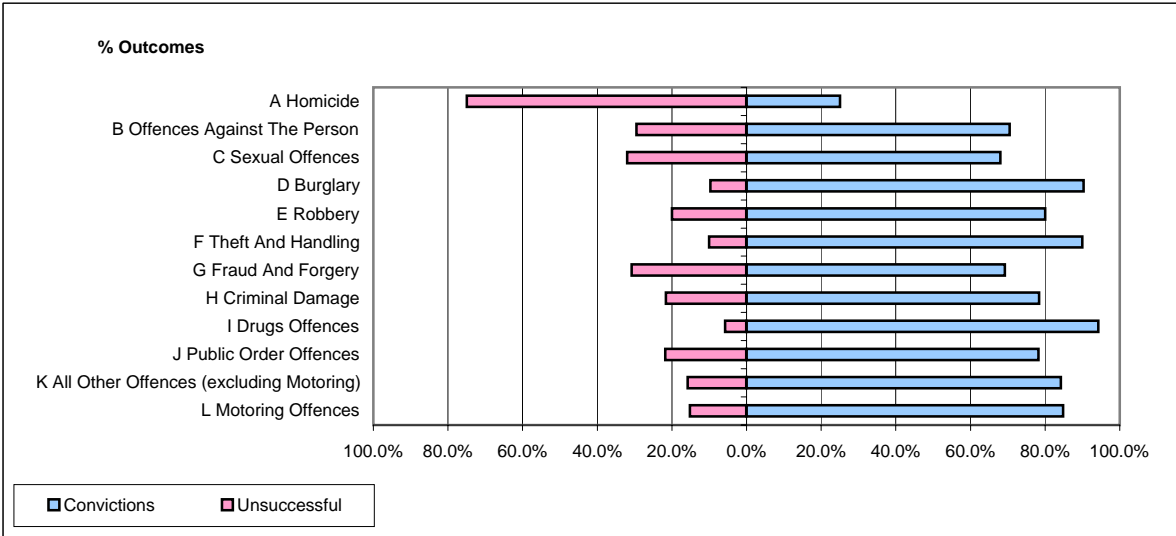


**CPS OUTCOMES BY PRINCIPAL OFFENCE CATEGORY**

**December 2007**

**P24-Merseyside**



	Convictions		Unsuccessful	
	Number of Defendants	%	Number of Defendants	%
<b>A Homicide</b>	<b>2</b>	<b>25.0%</b>	<b>6</b>	<b>75.0%</b>
<b>B Offences Against The Person</b>	<b>229</b>	<b>70.5%</b>	<b>96</b>	<b>29.5%</b>
<b>C Sexual Offences</b>	<b>17</b>	<b>68.0%</b>	<b>8</b>	<b>32.0%</b>
<b>D Burglary</b>	<b>56</b>	<b>90.3%</b>	<b>6</b>	<b>9.7%</b>
<b>E Robbery</b>	<b>20</b>	<b>80.0%</b>	<b>5</b>	<b>20.0%</b>
<b>F Theft And Handling</b>	<b>242</b>	<b>90.0%</b>	<b>27</b>	<b>10.0%</b>
<b>G Fraud And Forgery</b>	<b>9</b>	<b>69.2%</b>	<b>4</b>	<b>30.8%</b>
<b>H Criminal Damage</b>	<b>76</b>	<b>78.4%</b>	<b>21</b>	<b>21.6%</b>
<b>I Drugs Offences</b>	<b>181</b>	<b>94.3%</b>	<b>11</b>	<b>5.7%</b>
<b>J Public Order Offences</b>	<b>176</b>	<b>78.2%</b>	<b>49</b>	<b>21.8%</b>
<b>K All Other Offences (excluding Motoring)</b>	<b>112</b>	<b>84.2%</b>	<b>21</b>	<b>15.8%</b>
<b>L Motoring Offences</b>	<b>639</b>	<b>84.9%</b>	<b>114</b>	<b>15.1%</b>
<b>Admin Finalisations</b>	<b>0</b>	<b>0.0%</b>	<b>28</b>	<b>100.0%</b>
<b>TOTAL</b>	<b>1,759</b>	<b>81.6%</b>	<b>396</b>	<b>18.4%</b>