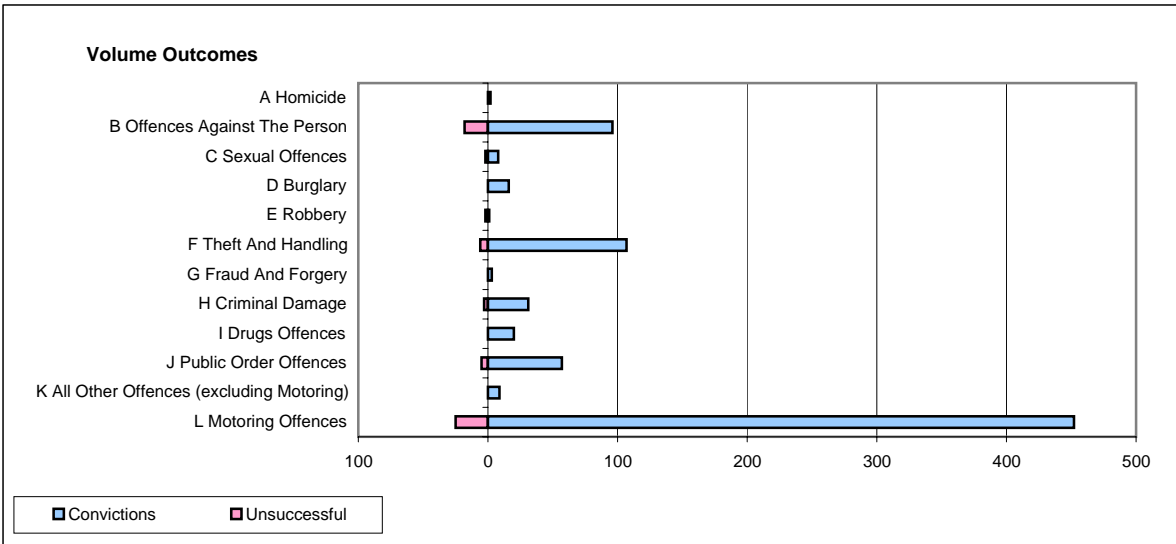
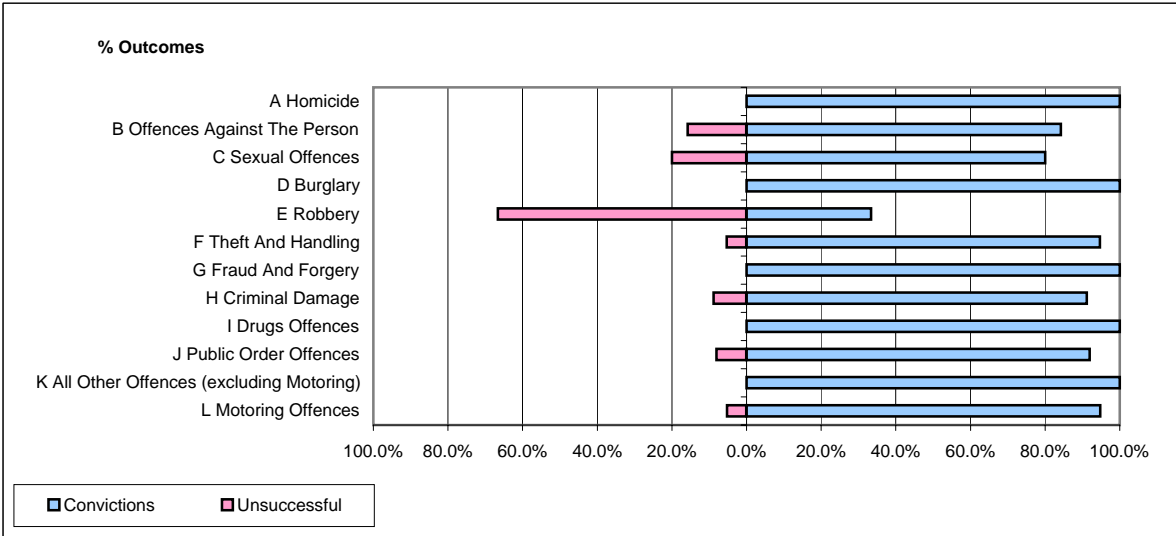


CPS OUTCOMES BY PRINCIPAL OFFENCE CATEGORY

December 2007

P23-Lincolnshire



	Convictions		Unsuccessful	
	Number of Defendants	%	Number of Defendants	%
A Homicide	2	100.0%	0	0.0%
B Offences Against The Person	96	84.2%	18	15.8%
C Sexual Offences	8	80.0%	2	20.0%
D Burglary	16	100.0%	0	0.0%
E Robbery	1	33.3%	2	66.7%
F Theft And Handling	107	94.7%	6	5.3%
G Fraud And Forgery	3	100.0%	0	0.0%
H Criminal Damage	31	91.2%	3	8.8%
I Drugs Offences	20	100.0%	0	0.0%
J Public Order Offences	57	91.9%	5	8.1%
K All Other Offences (excluding Motoring)	9	100.0%	0	0.0%
L Motoring Offences	452	94.8%	25	5.2%
Admin Finalisations	0	0.0%	17	100.0%
TOTAL	802	91.1%	78	8.9%