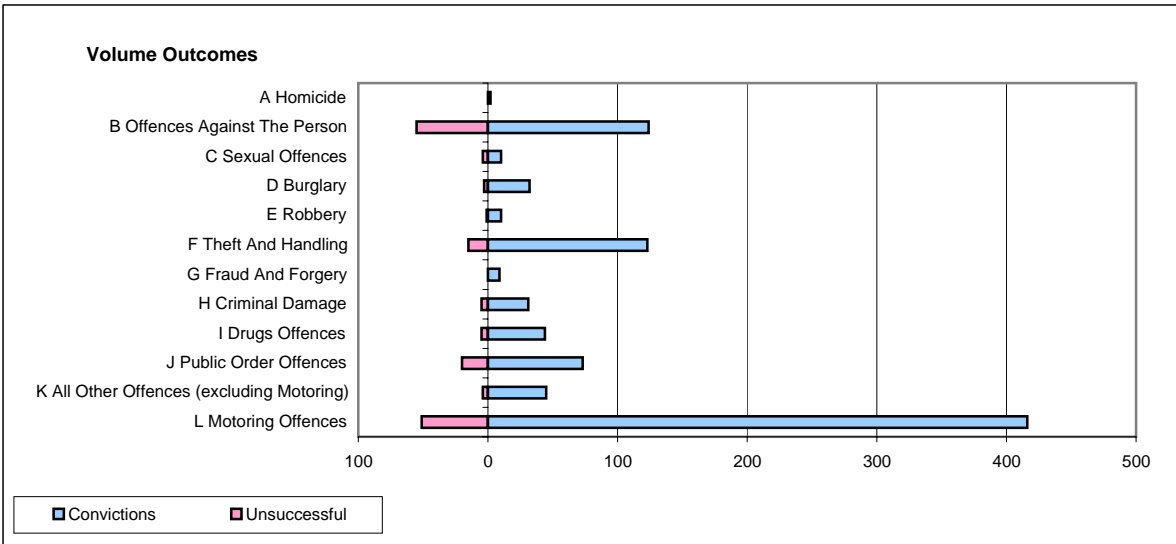
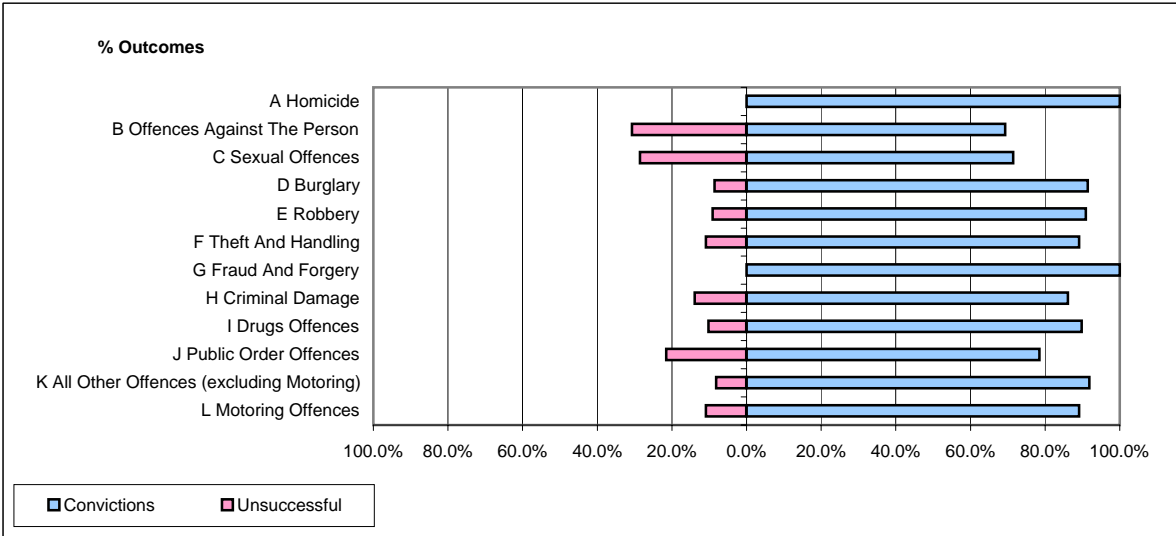


**CPS OUTCOMES BY PRINCIPAL OFFENCE CATEGORY**

**December 2007**

**P22-Leicestershire**



	Convictions		Unsuccessful	
	Number of Defendants	%	Number of Defendants	%
<b>A Homicide</b>	<b>2</b>	<b>100.0%</b>	<b>0</b>	<b>0.0%</b>
<b>B Offences Against The Person</b>	<b>124</b>	<b>69.3%</b>	<b>55</b>	<b>30.7%</b>
<b>C Sexual Offences</b>	<b>10</b>	<b>71.4%</b>	<b>4</b>	<b>28.6%</b>
<b>D Burglary</b>	<b>32</b>	<b>91.4%</b>	<b>3</b>	<b>8.6%</b>
<b>E Robbery</b>	<b>10</b>	<b>90.9%</b>	<b>1</b>	<b>9.1%</b>
<b>F Theft And Handling</b>	<b>123</b>	<b>89.1%</b>	<b>15</b>	<b>10.9%</b>
<b>G Fraud And Forgery</b>	<b>9</b>	<b>100.0%</b>	<b>0</b>	<b>0.0%</b>
<b>H Criminal Damage</b>	<b>31</b>	<b>86.1%</b>	<b>5</b>	<b>13.9%</b>
<b>I Drugs Offences</b>	<b>44</b>	<b>89.8%</b>	<b>5</b>	<b>10.2%</b>
<b>J Public Order Offences</b>	<b>73</b>	<b>78.5%</b>	<b>20</b>	<b>21.5%</b>
<b>K All Other Offences (excluding Motoring)</b>	<b>45</b>	<b>91.8%</b>	<b>4</b>	<b>8.2%</b>
<b>L Motoring Offences</b>	<b>416</b>	<b>89.1%</b>	<b>51</b>	<b>10.9%</b>
<b>Admin Finalisations</b>	<b>0</b>	<b>0.0%</b>	<b>32</b>	<b>100.0%</b>
<b>TOTAL</b>	<b>919</b>	<b>82.5%</b>	<b>195</b>	<b>17.5%</b>