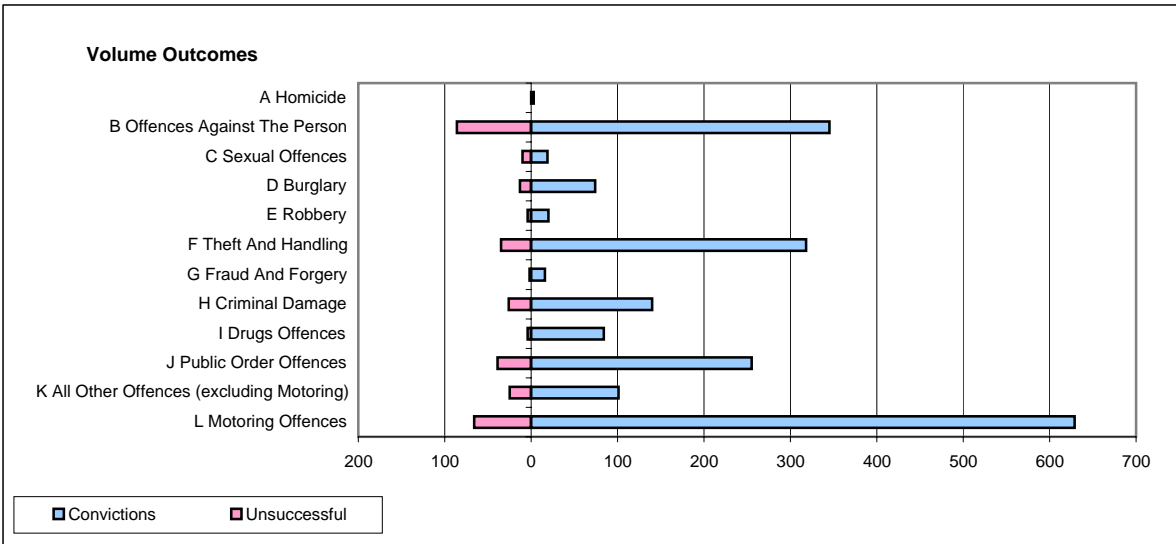
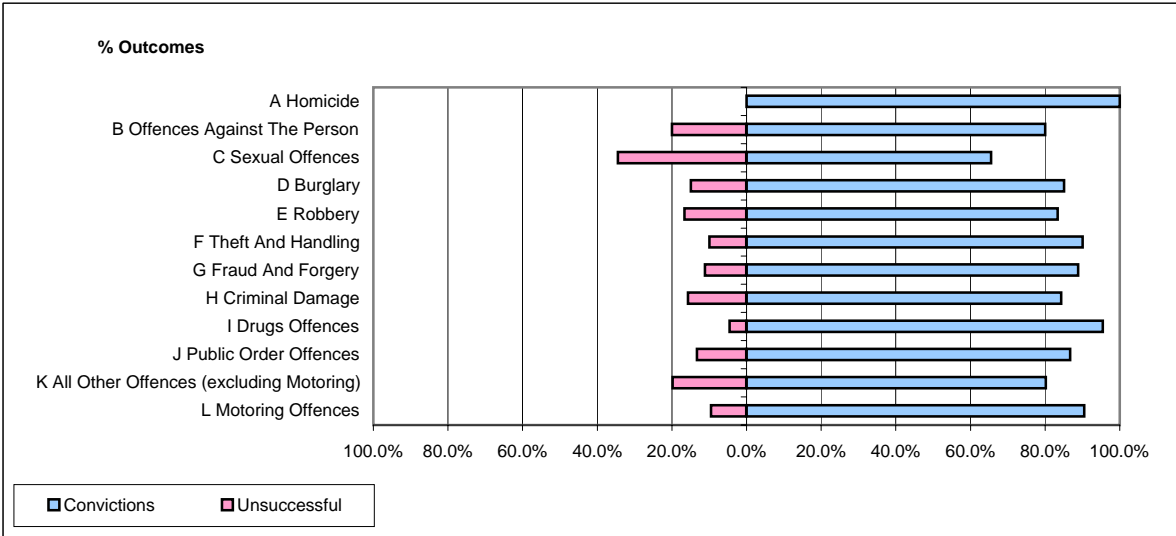


CPS OUTCOMES BY PRINCIPAL OFFENCE CATEGORY

December 2007

P21-Lancashire



	Convictions		Unsuccessful	
	Number of Defendants	%	Number of Defendants	%
A Homicide	3	100.0%	0	0.0%
B Offences Against The Person	345	80.0%	86	20.0%
C Sexual Offences	19	65.5%	10	34.5%
D Burglary	74	85.1%	13	14.9%
E Robbery	20	83.3%	4	16.7%
F Theft And Handling	318	90.1%	35	9.9%
G Fraud And Forgery	16	88.9%	2	11.1%
H Criminal Damage	140	84.3%	26	15.7%
I Drugs Offences	84	95.5%	4	4.5%
J Public Order Offences	255	86.7%	39	13.3%
K All Other Offences (excluding Motoring)	101	80.2%	25	19.8%
L Motoring Offences	629	90.5%	66	9.5%
Admin Finalisations	0	0.0%	44	100.0%
TOTAL	2,004	85.0%	354	15.0%