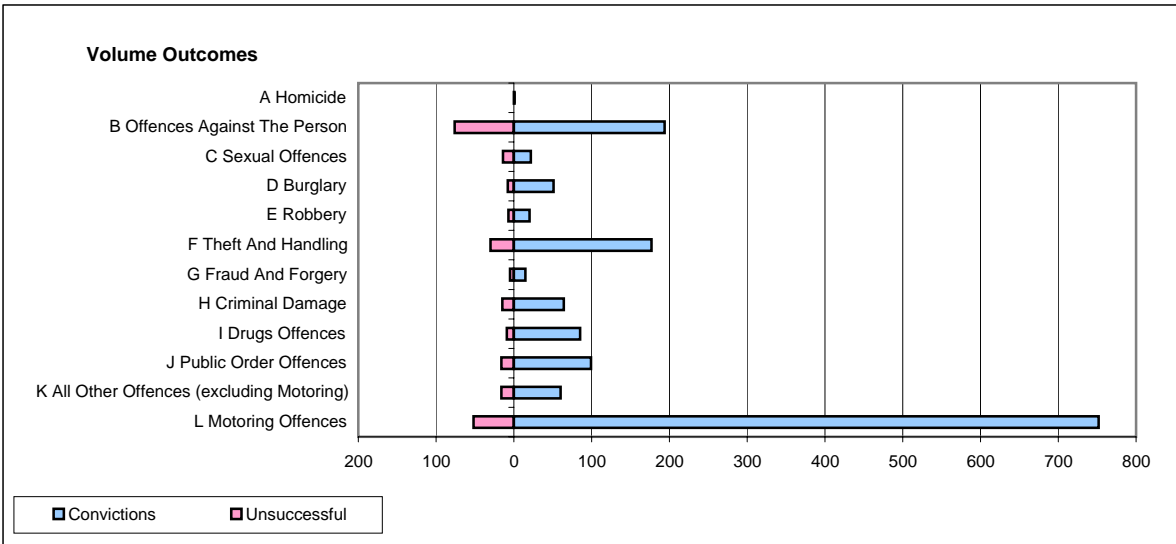
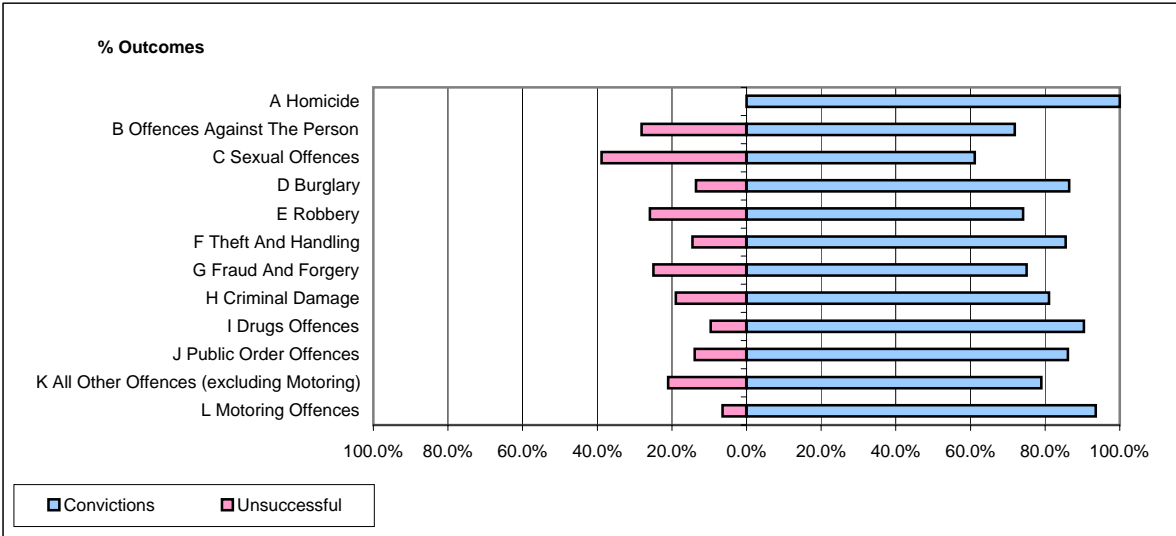


CPS OUTCOMES BY PRINCIPAL OFFENCE CATEGORY

December 2007

P20-Kent



	Convictions		Unsuccessful	
	Number of Defendants	%	Number of Defendants	%
A Homicide	1	100.0%	0	0.0%
B Offences Against The Person	194	71.9%	76	28.1%
C Sexual Offences	22	61.1%	14	38.9%
D Burglary	51	86.4%	8	13.6%
E Robbery	20	74.1%	7	25.9%
F Theft And Handling	177	85.5%	30	14.5%
G Fraud And Forgery	15	75.0%	5	25.0%
H Criminal Damage	64	81.0%	15	19.0%
I Drugs Offences	85	90.4%	9	9.6%
J Public Order Offences	99	86.1%	16	13.9%
K All Other Offences (excluding Motoring)	60	78.9%	16	21.1%
L Motoring Offences	752	93.5%	52	6.5%
Admin Finalisations	0	0.0%	36	100.0%
TOTAL	1,540	84.4%	284	15.6%