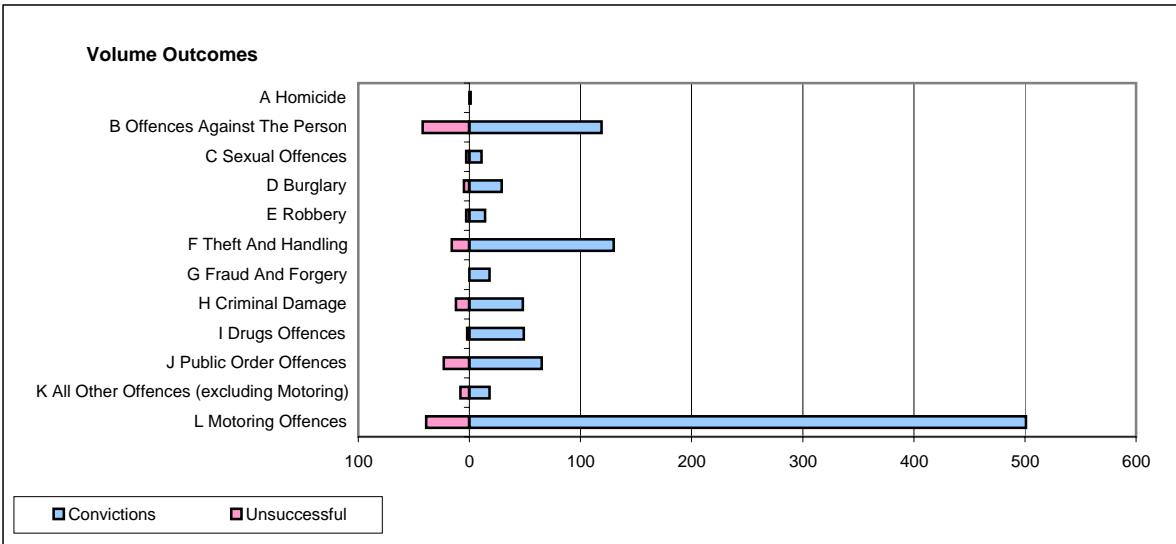
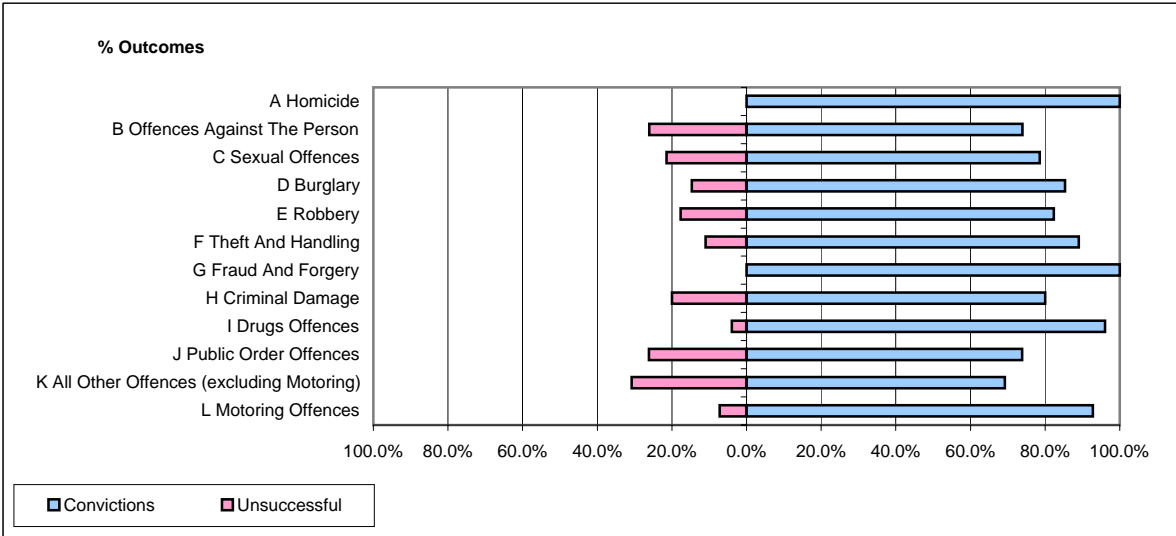


**CPS OUTCOMES BY PRINCIPAL OFFENCE CATEGORY**

December 2007

**P18-Hertfordshire**



	Convictions		Unsuccessful	
	Number of Defendants	%	Number of Defendants	%
<b>A Homicide</b>	<b>1</b>	<b>100.0%</b>	<b>0</b>	<b>0.0%</b>
<b>B Offences Against The Person</b>	<b>119</b>	<b>73.9%</b>	<b>42</b>	<b>26.1%</b>
<b>C Sexual Offences</b>	<b>11</b>	<b>78.6%</b>	<b>3</b>	<b>21.4%</b>
<b>D Burglary</b>	<b>29</b>	<b>85.3%</b>	<b>5</b>	<b>14.7%</b>
<b>E Robbery</b>	<b>14</b>	<b>82.4%</b>	<b>3</b>	<b>17.6%</b>
<b>F Theft And Handling</b>	<b>130</b>	<b>89.0%</b>	<b>16</b>	<b>11.0%</b>
<b>G Fraud And Forgery</b>	<b>18</b>	<b>100.0%</b>	<b>0</b>	<b>0.0%</b>
<b>H Criminal Damage</b>	<b>48</b>	<b>80.0%</b>	<b>12</b>	<b>20.0%</b>
<b>I Drugs Offences</b>	<b>49</b>	<b>96.1%</b>	<b>2</b>	<b>3.9%</b>
<b>J Public Order Offences</b>	<b>65</b>	<b>73.9%</b>	<b>23</b>	<b>26.1%</b>
<b>K All Other Offences (excluding Motoring)</b>	<b>18</b>	<b>69.2%</b>	<b>8</b>	<b>30.8%</b>
<b>L Motoring Offences</b>	<b>501</b>	<b>92.8%</b>	<b>39</b>	<b>7.2%</b>
<b>Admin Finalisations</b>	<b>0</b>	<b>0.0%</b>	<b>26</b>	<b>100.0%</b>
<b>TOTAL</b>	<b>1,003</b>	<b>84.9%</b>	<b>179</b>	<b>15.1%</b>