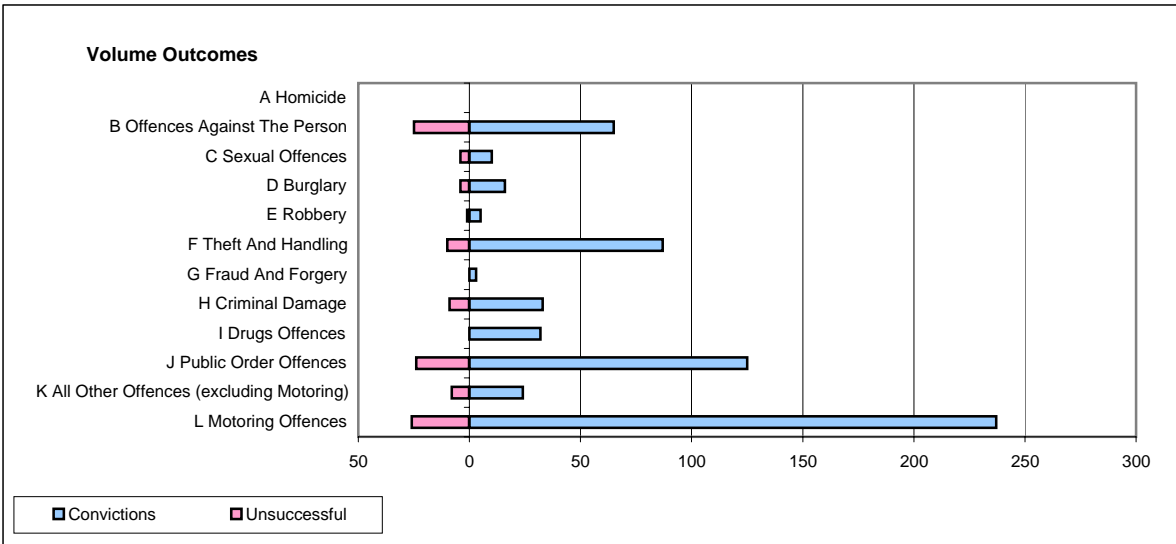
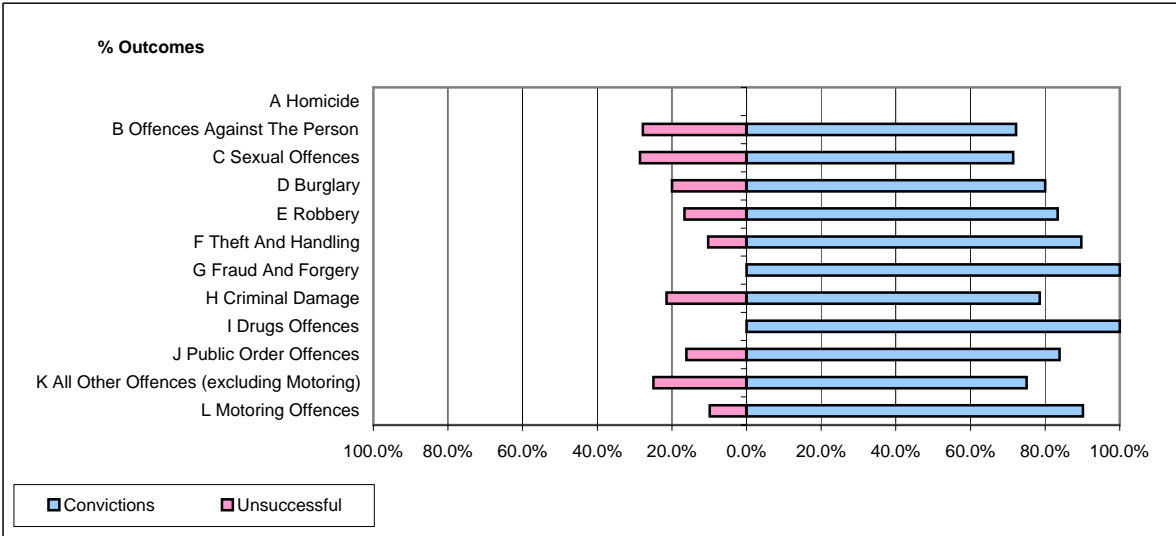


CPS OUTCOMES BY PRINCIPAL OFFENCE CATEGORY

December 2007

P16-Gwent



	Convictions		Unsuccessful	
	Number of Defendants	%	Number of Defendants	%
A Homicide	0	0	0	0
B Offences Against The Person	65	72.2%	25	27.8%
C Sexual Offences	10	71.4%	4	28.6%
D Burglary	16	80.0%	4	20.0%
E Robbery	5	83.3%	1	16.7%
F Theft And Handling	87	89.7%	10	10.3%
G Fraud And Forgery	3	100.0%	0	0.0%
H Criminal Damage	33	78.6%	9	21.4%
I Drugs Offences	32	100.0%	0	0.0%
J Public Order Offences	125	83.9%	24	16.1%
K All Other Offences (excluding Motoring)	24	75.0%	8	25.0%
L Motoring Offences	237	90.1%	26	9.9%
Admin Finalisations	0	0.0%	17	100.0%
TOTAL	637	83.3%	128	16.7%