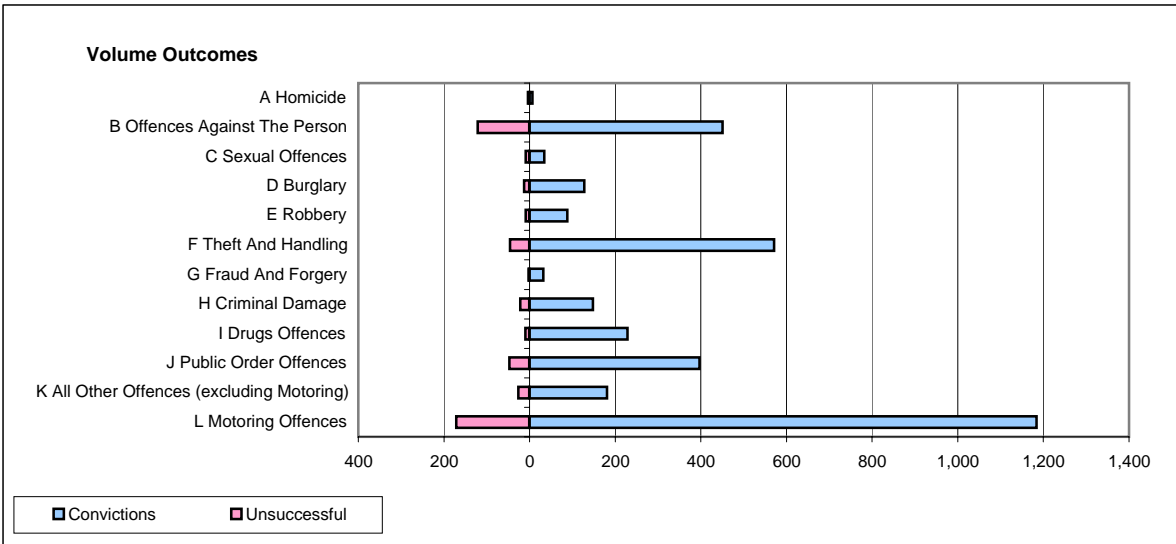
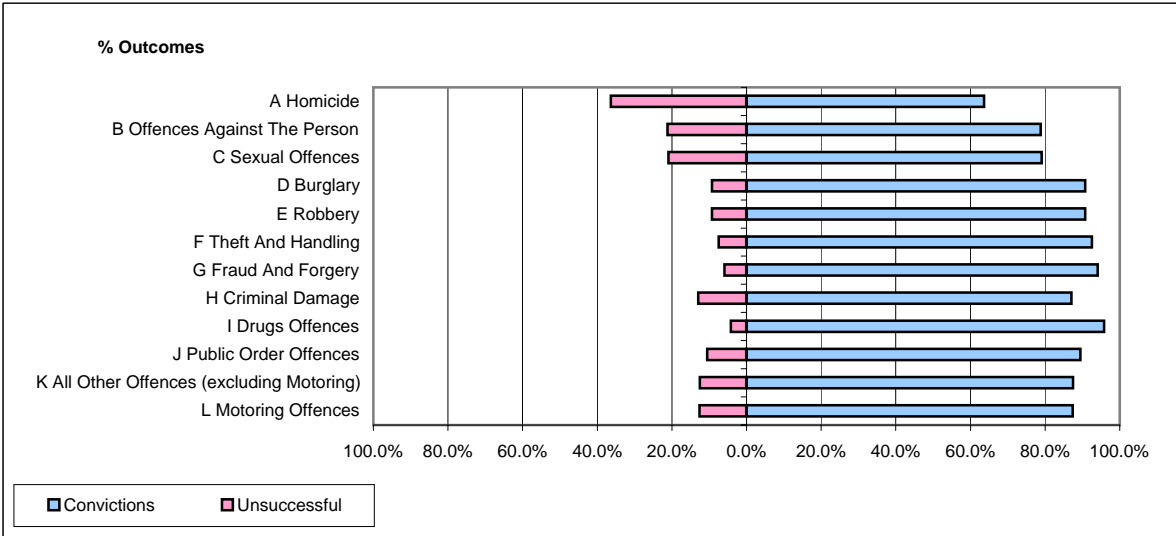


CPS OUTCOMES BY PRINCIPAL OFFENCE CATEGORY

December 2007

P15-GreaterManchester



	Convictions		Unsuccessful	
	Number of Defendants	%	Number of Defendants	%
A Homicide	7	63.6%	4	36.4%
B Offences Against The Person	451	78.8%	121	21.2%
C Sexual Offences	34	79.1%	9	20.9%
D Burglary	128	90.8%	13	9.2%
E Robbery	88	90.7%	9	9.3%
F Theft And Handling	571	92.5%	46	7.5%
G Fraud And Forgery	32	94.1%	2	5.9%
H Criminal Damage	148	87.1%	22	12.9%
I Drugs Offences	229	95.8%	10	4.2%
J Public Order Offences	397	89.4%	47	10.6%
K All Other Offences (excluding Motoring)	181	87.4%	26	12.6%
L Motoring Offences	1,184	87.4%	171	12.6%
Admin Finalisations	0	0.0%	95	100.0%
TOTAL	3,450	85.7%	575	14.3%