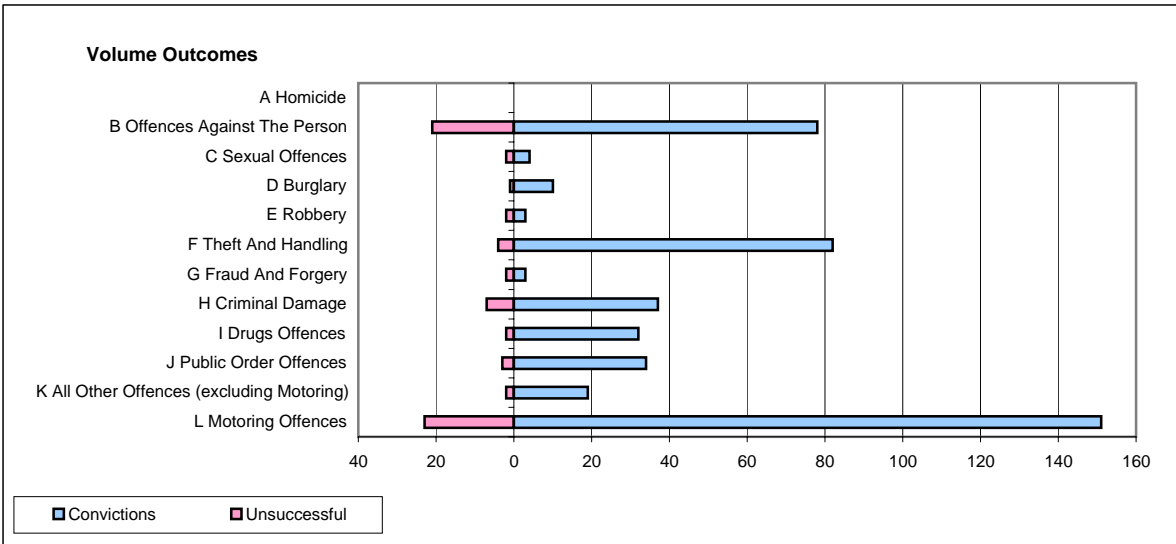
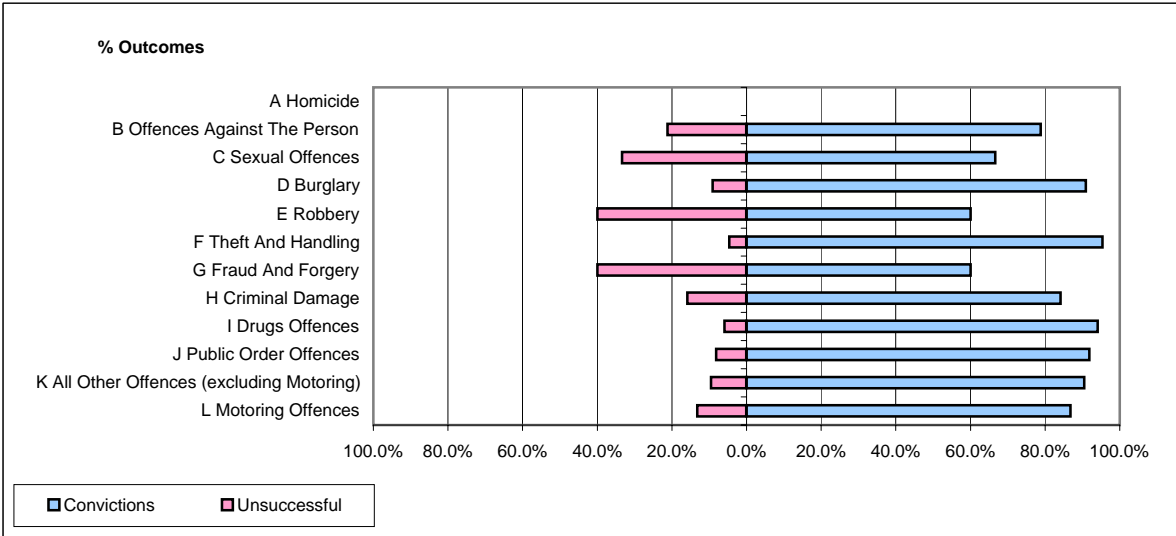


**CPS OUTCOMES BY PRINCIPAL OFFENCE CATEGORY**

**December 2007**

**P14-Gloucestershire**



	Convictions		Unsuccessful	
	Number of Defendants	%	Number of Defendants	%
<b>A Homicide</b>	<b>0</b>	<b>0</b>	<b>0</b>	<b>0</b>
<b>B Offences Against The Person</b>	<b>78</b>	<b>78.8%</b>	<b>21</b>	<b>21.2%</b>
<b>C Sexual Offences</b>	<b>4</b>	<b>66.7%</b>	<b>2</b>	<b>33.3%</b>
<b>D Burglary</b>	<b>10</b>	<b>90.9%</b>	<b>1</b>	<b>9.1%</b>
<b>E Robbery</b>	<b>3</b>	<b>60.0%</b>	<b>2</b>	<b>40.0%</b>
<b>F Theft And Handling</b>	<b>82</b>	<b>95.3%</b>	<b>4</b>	<b>4.7%</b>
<b>G Fraud And Forgery</b>	<b>3</b>	<b>60.0%</b>	<b>2</b>	<b>40.0%</b>
<b>H Criminal Damage</b>	<b>37</b>	<b>84.1%</b>	<b>7</b>	<b>15.9%</b>
<b>I Drugs Offences</b>	<b>32</b>	<b>94.1%</b>	<b>2</b>	<b>5.9%</b>
<b>J Public Order Offences</b>	<b>34</b>	<b>91.9%</b>	<b>3</b>	<b>8.1%</b>
<b>K All Other Offences (excluding Motoring)</b>	<b>19</b>	<b>90.5%</b>	<b>2</b>	<b>9.5%</b>
<b>L Motoring Offences</b>	<b>151</b>	<b>86.8%</b>	<b>23</b>	<b>13.2%</b>
<b>Admin Finalisations</b>	<b>0</b>	<b>0.0%</b>	<b>20</b>	<b>100.0%</b>
<b>TOTAL</b>	<b>453</b>	<b>83.6%</b>	<b>89</b>	<b>16.4%</b>