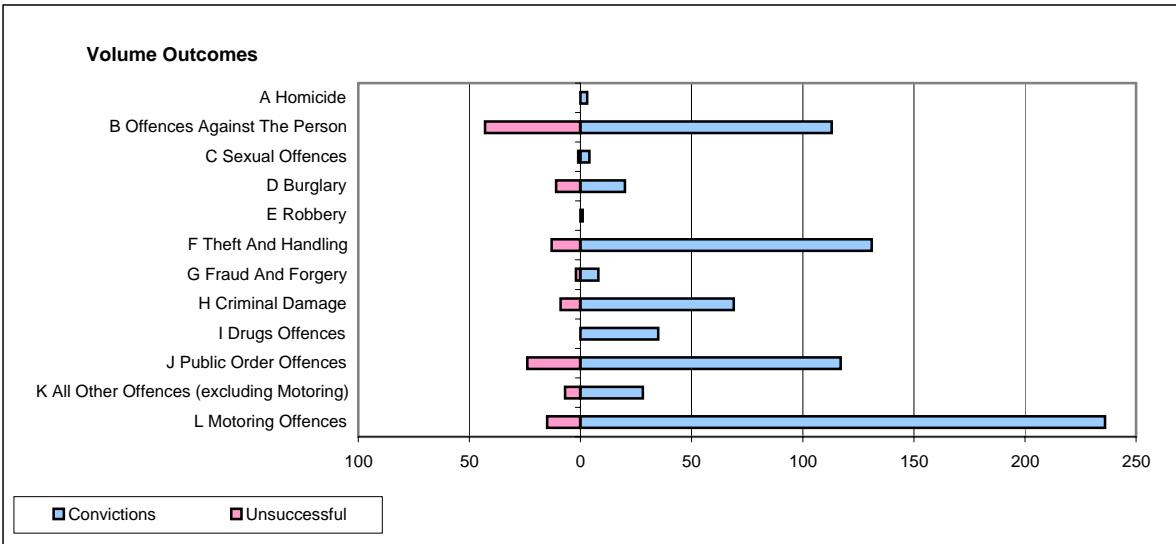
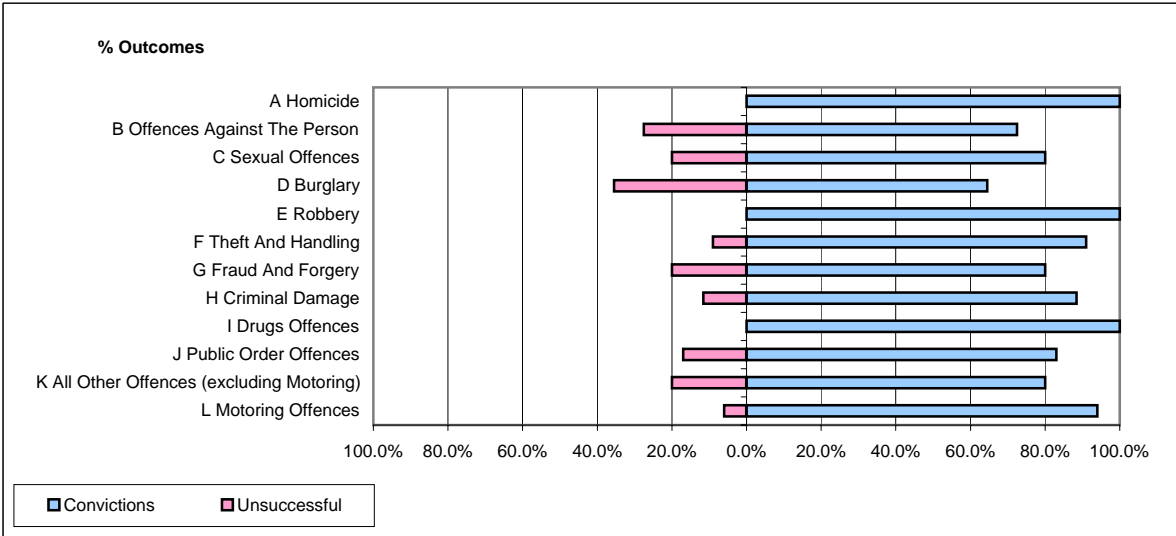


CPS OUTCOMES BY PRINCIPAL OFFENCE CATEGORY

December 2007

P11-Durham



	Convictions		Unsuccessful	
	Number of Defendants	%	Number of Defendants	%
A Homicide	3	100.0%	0	0.0%
B Offences Against The Person	113	72.4%	43	27.6%
C Sexual Offences	4	80.0%	1	20.0%
D Burglary	20	64.5%	11	35.5%
E Robbery	1	100.0%	0	0.0%
F Theft And Handling	131	91.0%	13	9.0%
G Fraud And Forgery	8	80.0%	2	20.0%
H Criminal Damage	69	88.5%	9	11.5%
I Drugs Offences	35	100.0%	0	0.0%
J Public Order Offences	117	83.0%	24	17.0%
K All Other Offences (excluding Motoring)	28	80.0%	7	20.0%
L Motoring Offences	236	94.0%	15	6.0%
Admin Finalisations	0	0.0%	16	100.0%
TOTAL	765	84.4%	141	15.6%