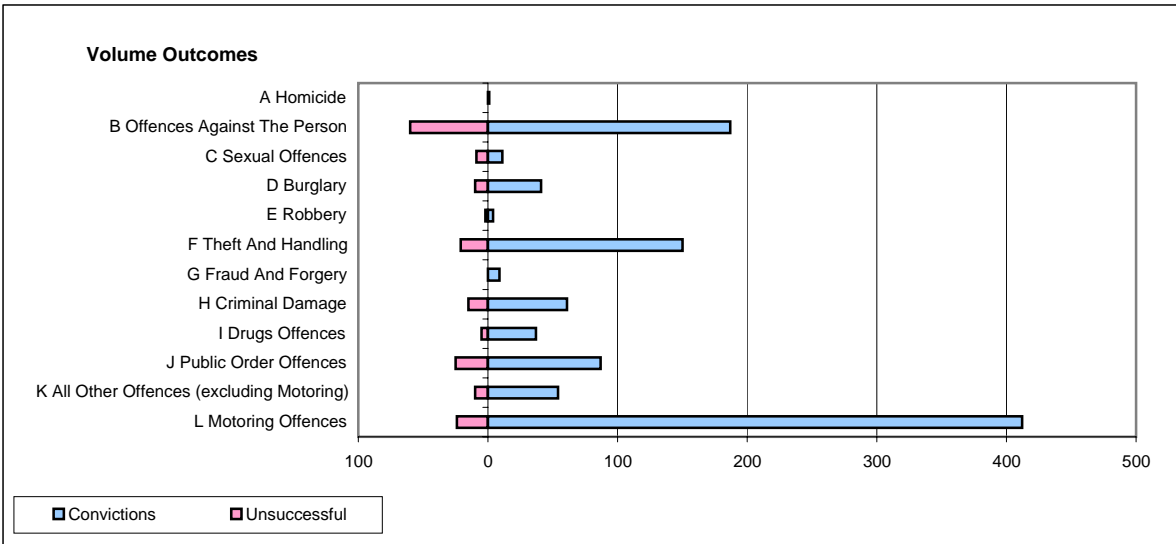
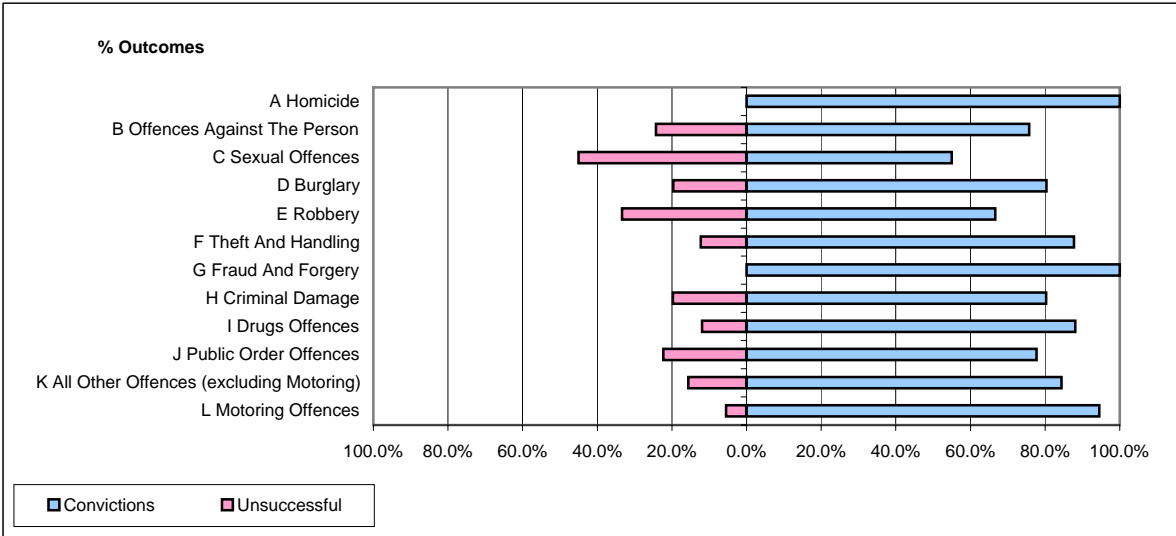


CPS OUTCOMES BY PRINCIPAL OFFENCE CATEGORY

December 2007

P08-Derbyshire



	Convictions		Unsuccessful	
	Number of Defendants	%	Number of Defendants	%
A Homicide	1	100.0%	0	0.0%
B Offences Against The Person	187	75.7%	60	24.3%
C Sexual Offences	11	55.0%	9	45.0%
D Burglary	41	80.4%	10	19.6%
E Robbery	4	66.7%	2	33.3%
F Theft And Handling	150	87.7%	21	12.3%
G Fraud And Forgery	9	100.0%	0	0.0%
H Criminal Damage	61	80.3%	15	19.7%
I Drugs Offences	37	88.1%	5	11.9%
J Public Order Offences	87	77.7%	25	22.3%
K All Other Offences (excluding Motoring)	54	84.4%	10	15.6%
L Motoring Offences	412	94.5%	24	5.5%
Admin Finalisations	0	0.0%	17	100.0%
TOTAL	1,054	84.2%	198	15.8%