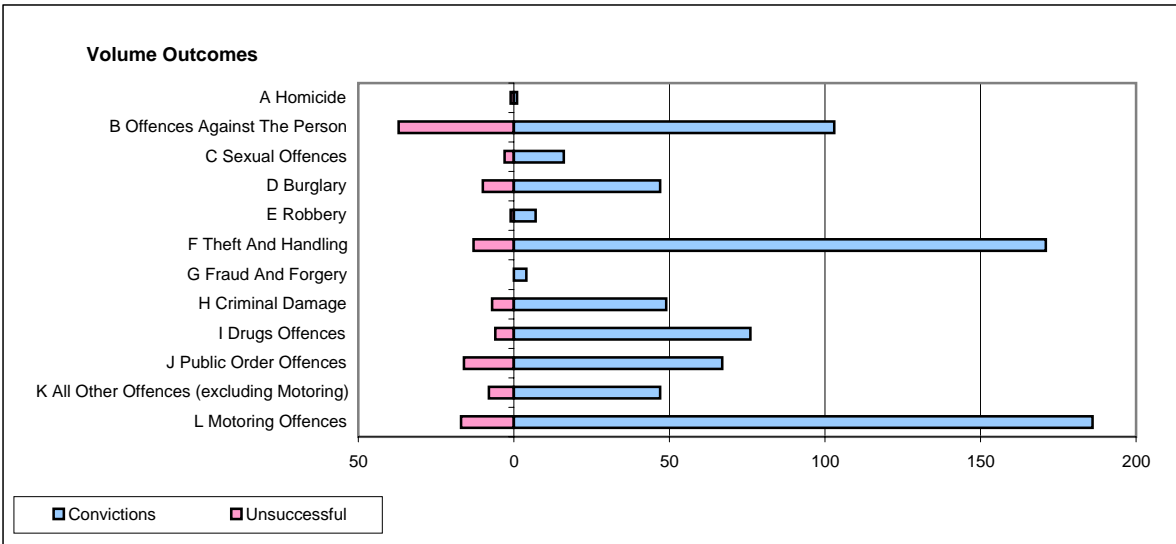
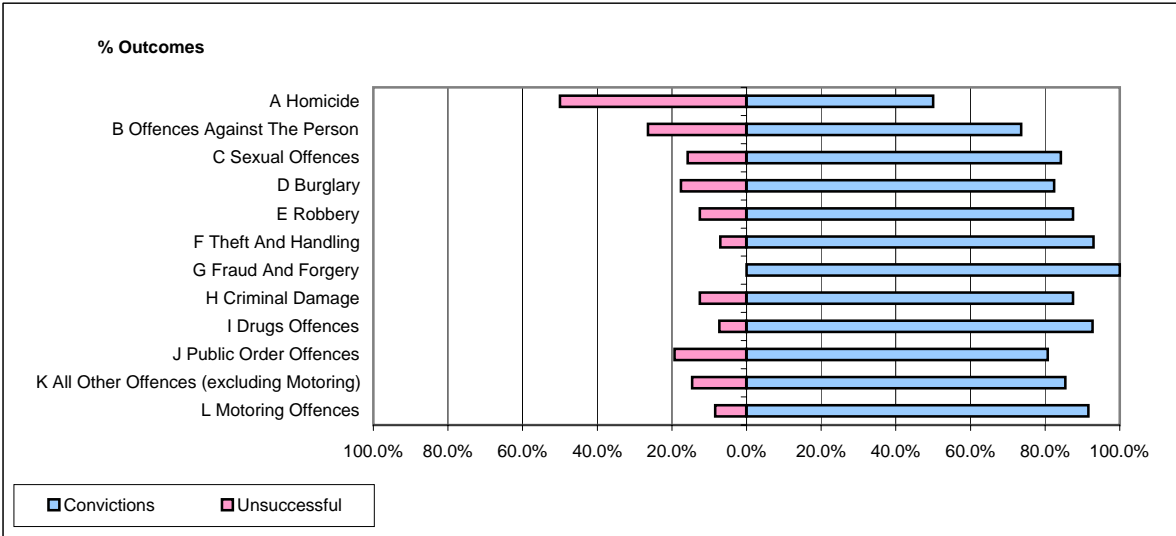


CPS OUTCOMES BY PRINCIPAL OFFENCE CATEGORY

December 2007

P06-Cleveland



	Convictions		Unsuccessful	
	Number of Defendants	%	Number of Defendants	%
A Homicide	1	50.0%	1	50.0%
B Offences Against The Person	103	73.6%	37	26.4%
C Sexual Offences	16	84.2%	3	15.8%
D Burglary	47	82.5%	10	17.5%
E Robbery	7	87.5%	1	12.5%
F Theft And Handling	171	92.9%	13	7.1%
G Fraud And Forgery	4	100.0%	0	0.0%
H Criminal Damage	49	87.5%	7	12.5%
I Drugs Offences	76	92.7%	6	7.3%
J Public Order Offences	67	80.7%	16	19.3%
K All Other Offences (excluding Motoring)	47	85.5%	8	14.5%
L Motoring Offences	186	91.6%	17	8.4%
Admin Finalisations	0	0.0%	21	100.0%
TOTAL	774	84.7%	140	15.3%