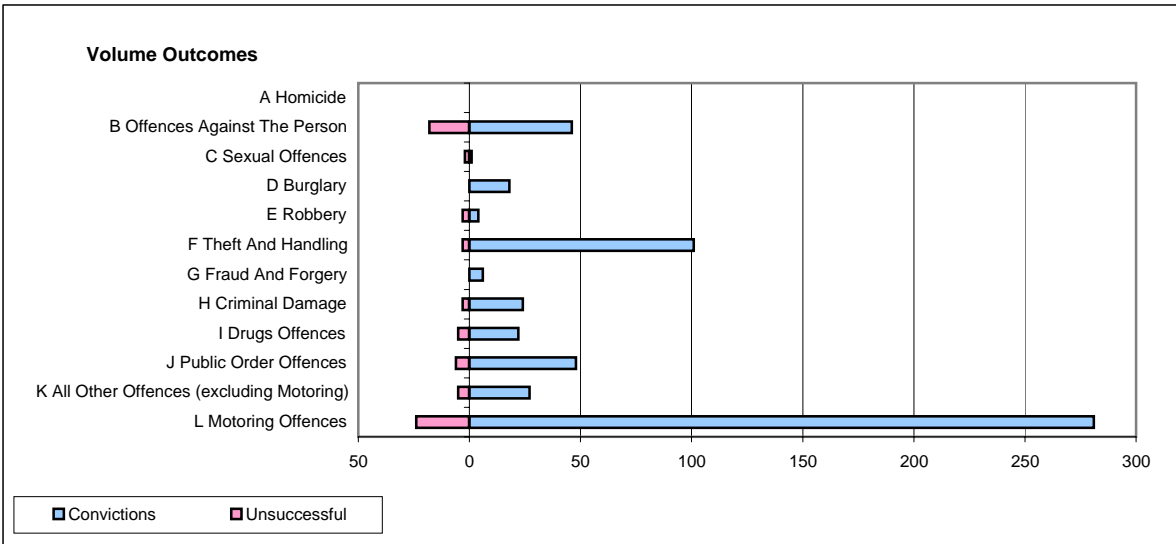
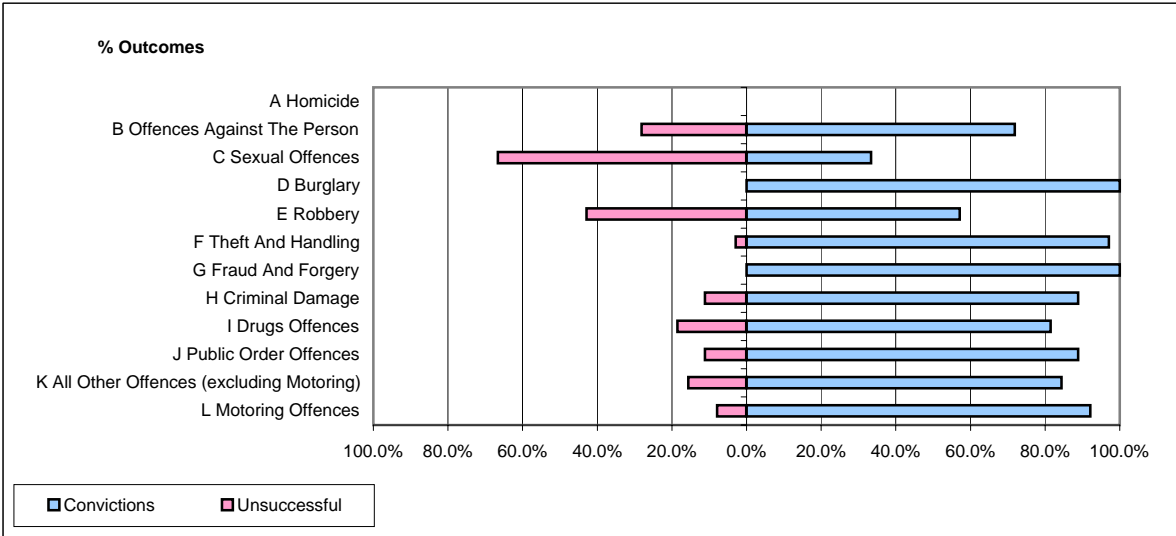


CPS OUTCOMES BY PRINCIPAL OFFENCE CATEGORY

December 2007

P02-Bedfordshire



	Convictions		Unsuccessful	
	Number of Defendants	%	Number of Defendants	%
A Homicide	0	0	0	0
B Offences Against The Person	46	71.9%	18	28.1%
C Sexual Offences	1	33.3%	2	66.7%
D Burglary	18	100.0%	0	0.0%
E Robbery	4	57.1%	3	42.9%
F Theft And Handling	101	97.1%	3	2.9%
G Fraud And Forgery	6	100.0%	0	0.0%
H Criminal Damage	24	88.9%	3	11.1%
I Drugs Offences	22	81.5%	5	18.5%
J Public Order Offences	48	88.9%	6	11.1%
K All Other Offences (excluding Motoring)	27	84.4%	5	15.6%
L Motoring Offences	281	92.1%	24	7.9%
Admin Finalisations	0	0.0%	11	100.0%
TOTAL	578	87.8%	80	12.2%