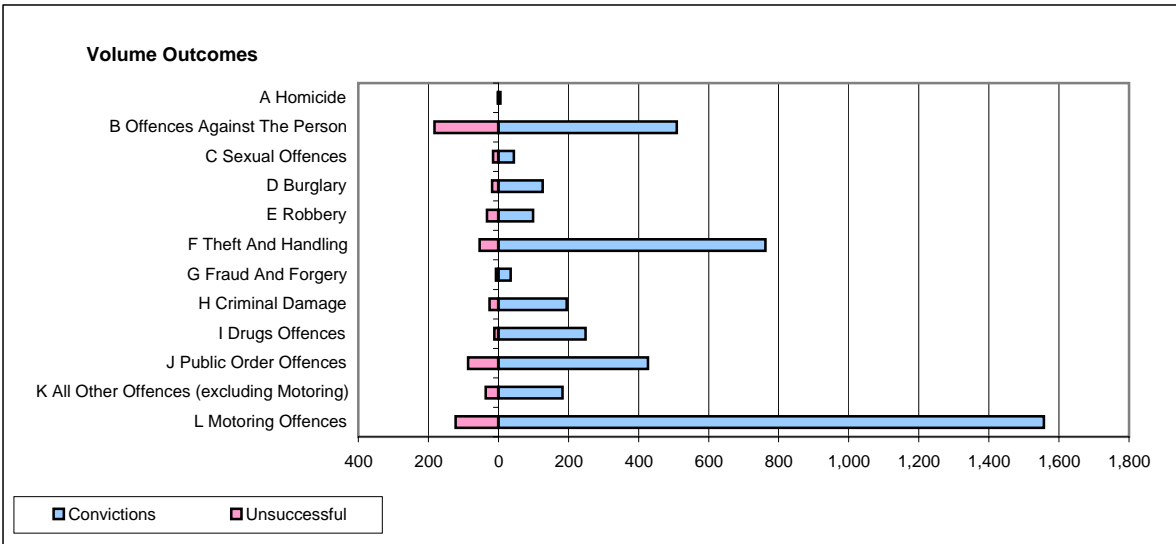
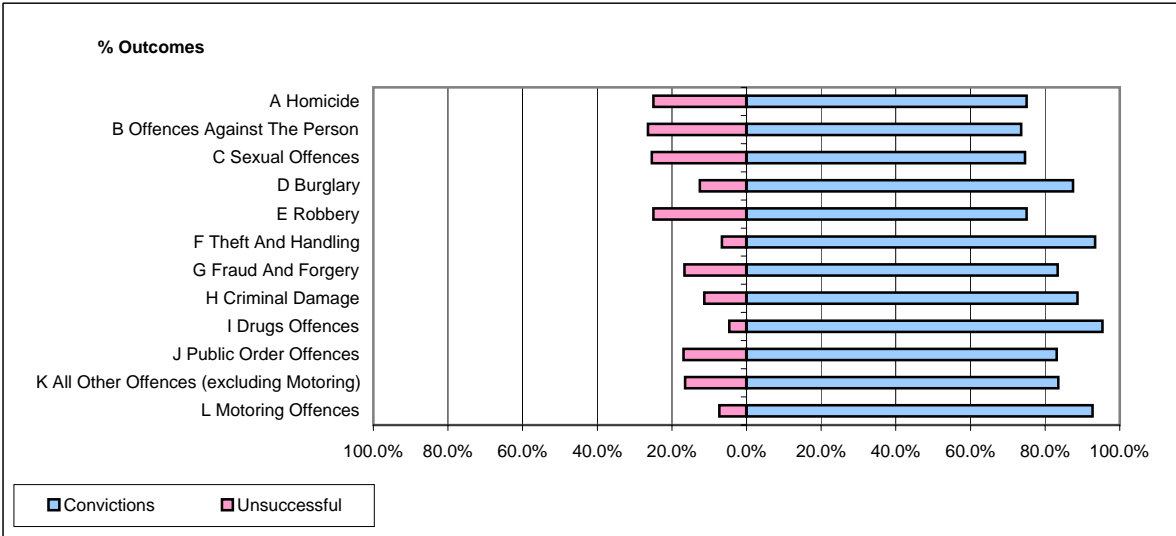


**CPS OUTCOMES BY PRINCIPAL OFFENCE CATEGORY**

**November 2007**

**P41-WestMidlands**



	Convictions		Unsuccessful	
	Number of Defendants	%	Number of Defendants	%
<b>A Homicide</b>	6	75.0%	2	25.0%
<b>B Offences Against The Person</b>	509	73.6%	183	26.4%
<b>C Sexual Offences</b>	44	74.6%	15	25.4%
<b>D Burglary</b>	126	87.5%	18	12.5%
<b>E Robbery</b>	99	75.0%	33	25.0%
<b>F Theft And Handling</b>	762	93.4%	54	6.6%
<b>G Fraud And Forgery</b>	35	83.3%	7	16.7%
<b>H Criminal Damage</b>	195	88.6%	25	11.4%
<b>I Drugs Offences</b>	249	95.4%	12	4.6%
<b>J Public Order Offences</b>	427	83.1%	87	16.9%
<b>K All Other Offences (excluding Motoring)</b>	183	83.6%	36	16.4%
<b>L Motoring Offences</b>	1,557	92.7%	122	7.3%
<b>Admin Finalisations</b>	0	0.0%	81	100.0%
<b>TOTAL</b>	<b>4,192</b>	<b>86.1%</b>	<b>675</b>	<b>13.9%</b>