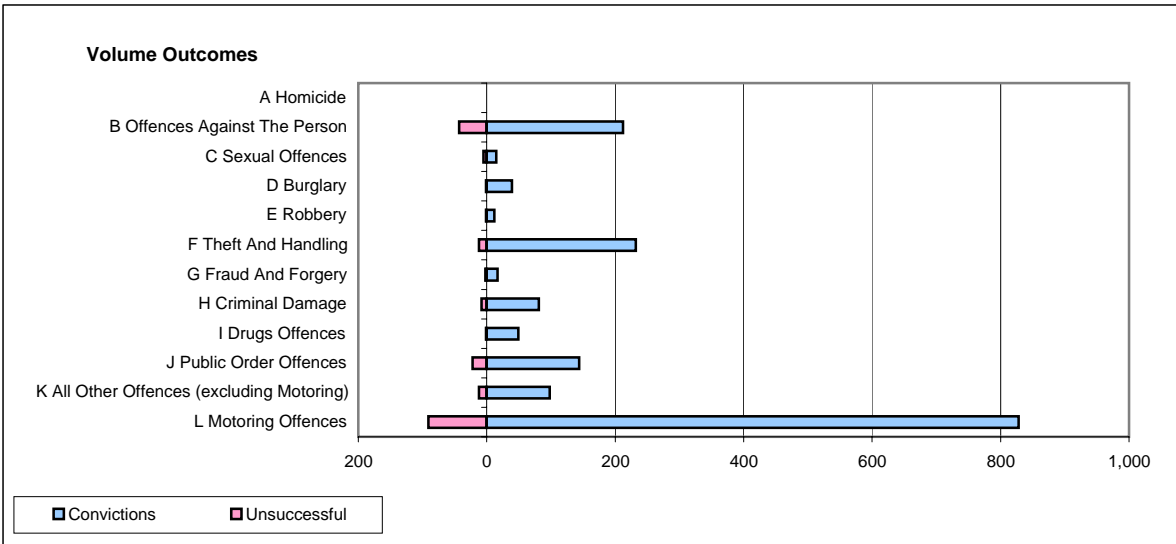
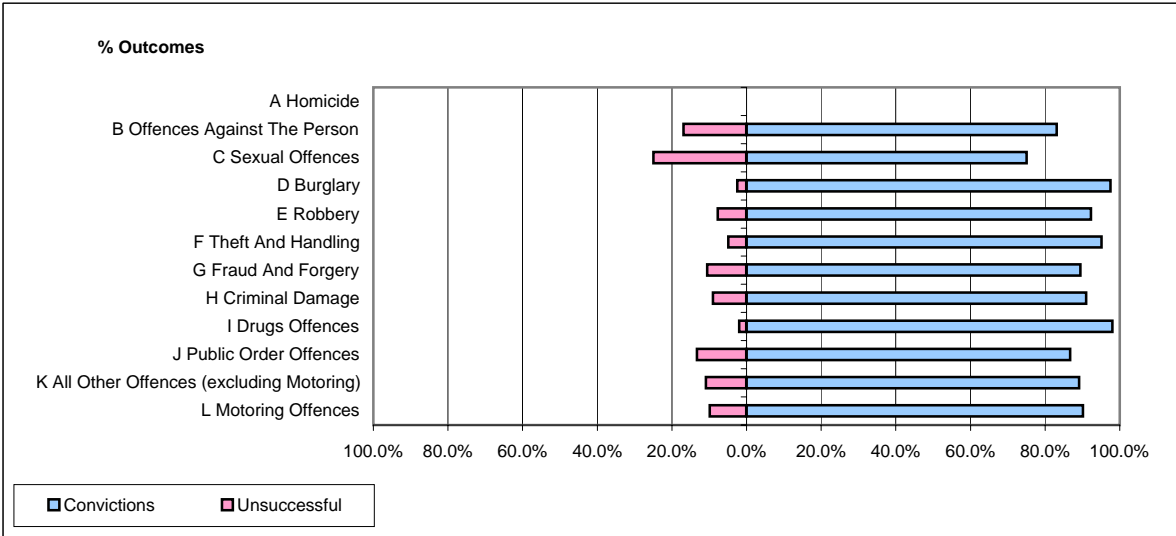


CPS OUTCOMES BY PRINCIPAL OFFENCE CATEGORY

November 2007

P40-WestMercia



	Convictions		Unsuccessful	
	Number of Defendants	%	Number of Defendants	%
A Homicide	0	0	0	0
B Offences Against The Person	212	83.1%	43	16.9%
C Sexual Offences	15	75.0%	5	25.0%
D Burglary	39	97.5%	1	2.5%
E Robbery	12	92.3%	1	7.7%
F Theft And Handling	232	95.1%	12	4.9%
G Fraud And Forgery	17	89.5%	2	10.5%
H Criminal Damage	81	91.0%	8	9.0%
I Drugs Offences	49	98.0%	1	2.0%
J Public Order Offences	144	86.7%	22	13.3%
K All Other Offences (excluding Motoring)	98	89.1%	12	10.9%
L Motoring Offences	828	90.1%	91	9.9%
Admin Finalisations	0	0.0%	25	100.0%
TOTAL	1,727	88.6%	223	11.4%