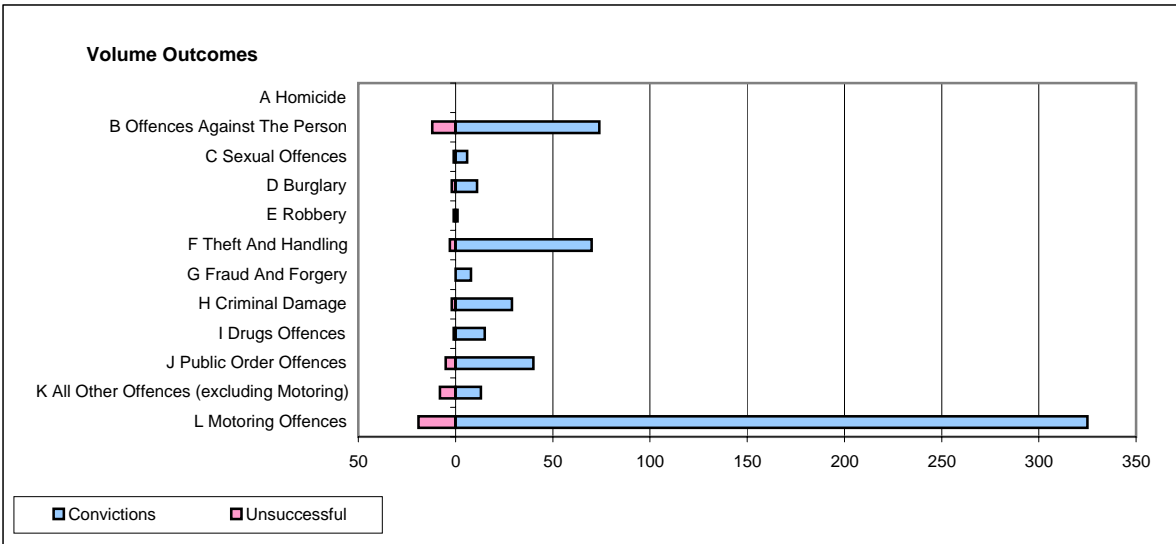
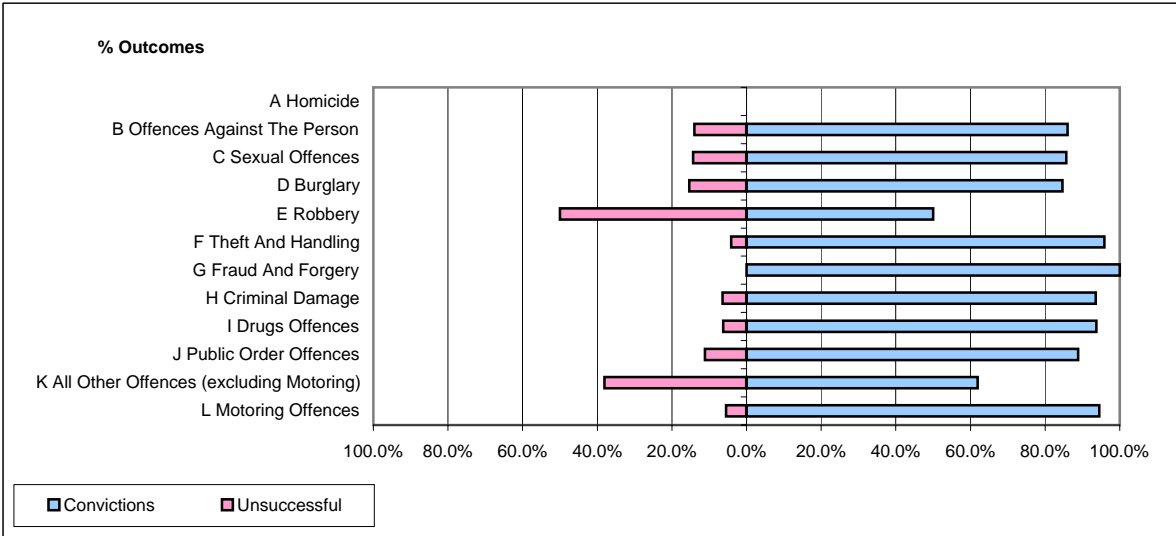


**CPS OUTCOMES BY PRINCIPAL OFFENCE CATEGORY**

**November 2007**

**P39-Warwickshire**



	Convictions		Unsuccessful	
	Number of Defendants	%	Number of Defendants	%
<b>A Homicide</b>	<b>0</b>	<b>0</b>	<b>0</b>	<b>0</b>
<b>B Offences Against The Person</b>	<b>74</b>	<b>86.0%</b>	<b>12</b>	<b>14.0%</b>
<b>C Sexual Offences</b>	<b>6</b>	<b>85.7%</b>	<b>1</b>	<b>14.3%</b>
<b>D Burglary</b>	<b>11</b>	<b>84.6%</b>	<b>2</b>	<b>15.4%</b>
<b>E Robbery</b>	<b>1</b>	<b>50.0%</b>	<b>1</b>	<b>50.0%</b>
<b>F Theft And Handling</b>	<b>70</b>	<b>95.9%</b>	<b>3</b>	<b>4.1%</b>
<b>G Fraud And Forgery</b>	<b>8</b>	<b>100.0%</b>	<b>0</b>	<b>0.0%</b>
<b>H Criminal Damage</b>	<b>29</b>	<b>93.5%</b>	<b>2</b>	<b>6.5%</b>
<b>I Drugs Offences</b>	<b>15</b>	<b>93.8%</b>	<b>1</b>	<b>6.3%</b>
<b>J Public Order Offences</b>	<b>40</b>	<b>88.9%</b>	<b>5</b>	<b>11.1%</b>
<b>K All Other Offences (excluding Motoring)</b>	<b>13</b>	<b>61.9%</b>	<b>8</b>	<b>38.1%</b>
<b>L Motoring Offences</b>	<b>325</b>	<b>94.5%</b>	<b>19</b>	<b>5.5%</b>
<b>Admin Finalisations</b>	<b>0</b>	<b>0.0%</b>	<b>10</b>	<b>100.0%</b>
<b>TOTAL</b>	<b>592</b>	<b>90.2%</b>	<b>64</b>	<b>9.8%</b>