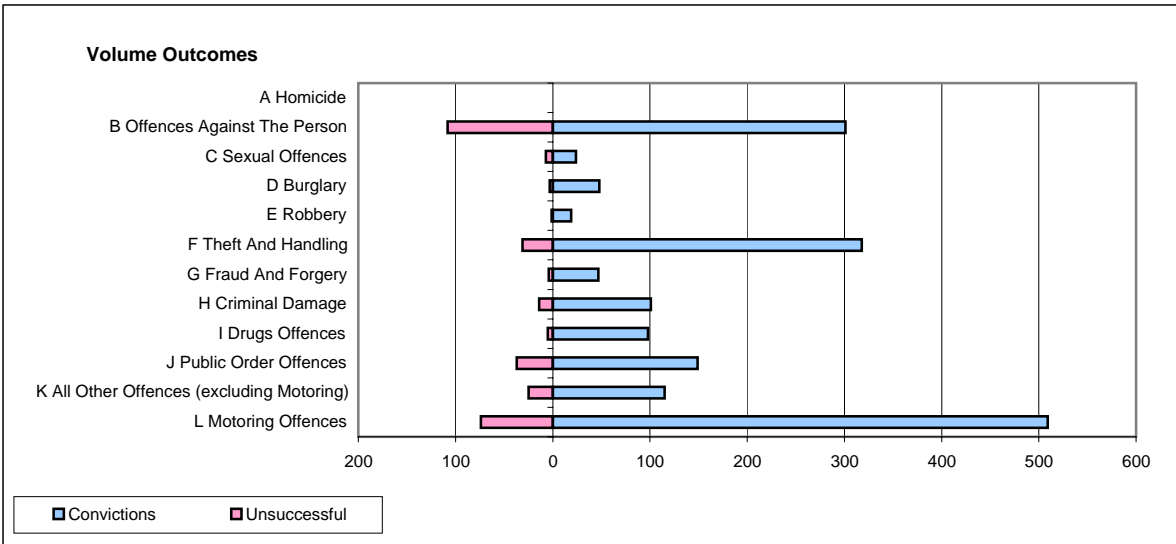
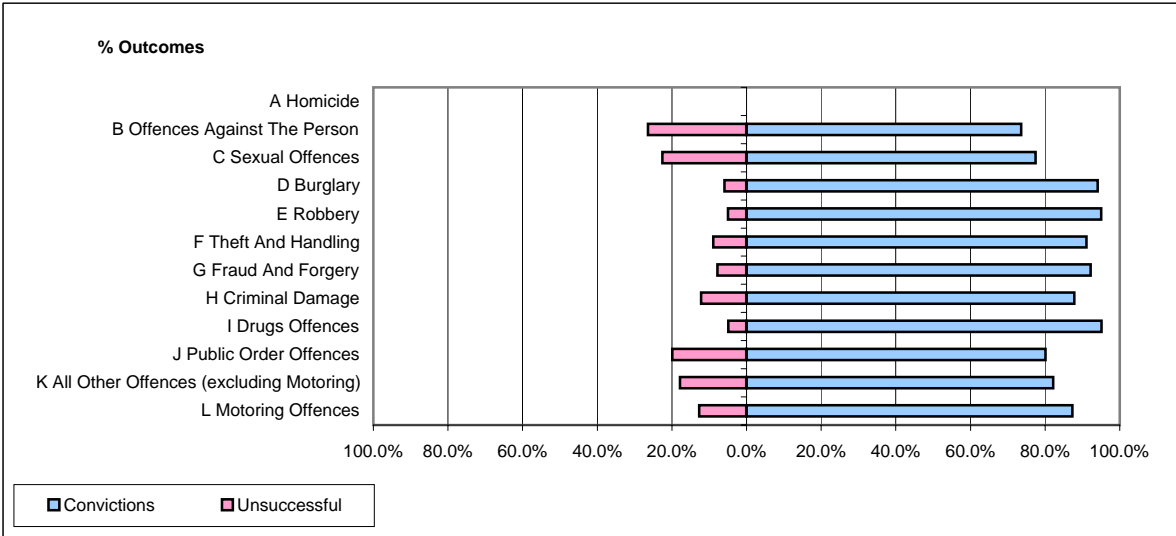


**CPS OUTCOMES BY PRINCIPAL OFFENCE CATEGORY**

**November 2007**

**P37-Sussex**



	Convictions		Unsuccessful	
	Number of Defendants	%	Number of Defendants	%
<b>A Homicide</b>	<b>0</b>	<b>0</b>	<b>0</b>	<b>0</b>
<b>B Offences Against The Person</b>	<b>301</b>	<b>73.6%</b>	<b>108</b>	<b>26.4%</b>
<b>C Sexual Offences</b>	<b>24</b>	<b>77.4%</b>	<b>7</b>	<b>22.6%</b>
<b>D Burglary</b>	<b>48</b>	<b>94.1%</b>	<b>3</b>	<b>5.9%</b>
<b>E Robbery</b>	<b>19</b>	<b>95.0%</b>	<b>1</b>	<b>5.0%</b>
<b>F Theft And Handling</b>	<b>318</b>	<b>91.1%</b>	<b>31</b>	<b>8.9%</b>
<b>G Fraud And Forgery</b>	<b>47</b>	<b>92.2%</b>	<b>4</b>	<b>7.8%</b>
<b>H Criminal Damage</b>	<b>101</b>	<b>87.8%</b>	<b>14</b>	<b>12.2%</b>
<b>I Drugs Offences</b>	<b>98</b>	<b>95.1%</b>	<b>5</b>	<b>4.9%</b>
<b>J Public Order Offences</b>	<b>149</b>	<b>80.1%</b>	<b>37</b>	<b>19.9%</b>
<b>K All Other Offences (excluding Motoring)</b>	<b>115</b>	<b>82.1%</b>	<b>25</b>	<b>17.9%</b>
<b>L Motoring Offences</b>	<b>509</b>	<b>87.3%</b>	<b>74</b>	<b>12.7%</b>
<b>Admin Finalisations</b>	<b>0</b>	<b>0.0%</b>	<b>43</b>	<b>100.0%</b>
<b>TOTAL</b>	<b>1,729</b>	<b>83.1%</b>	<b>352</b>	<b>16.9%</b>