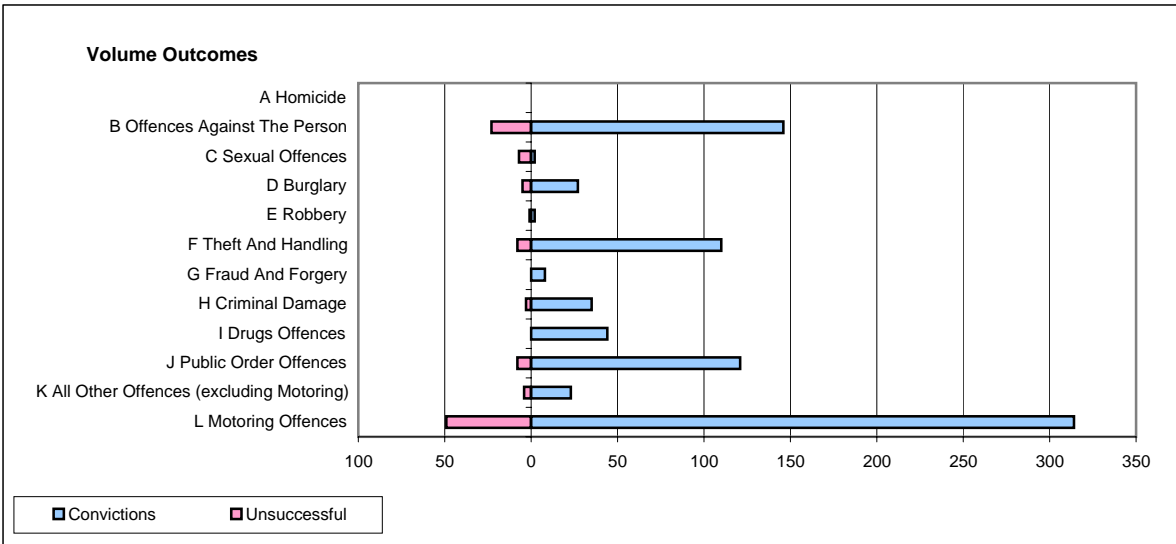
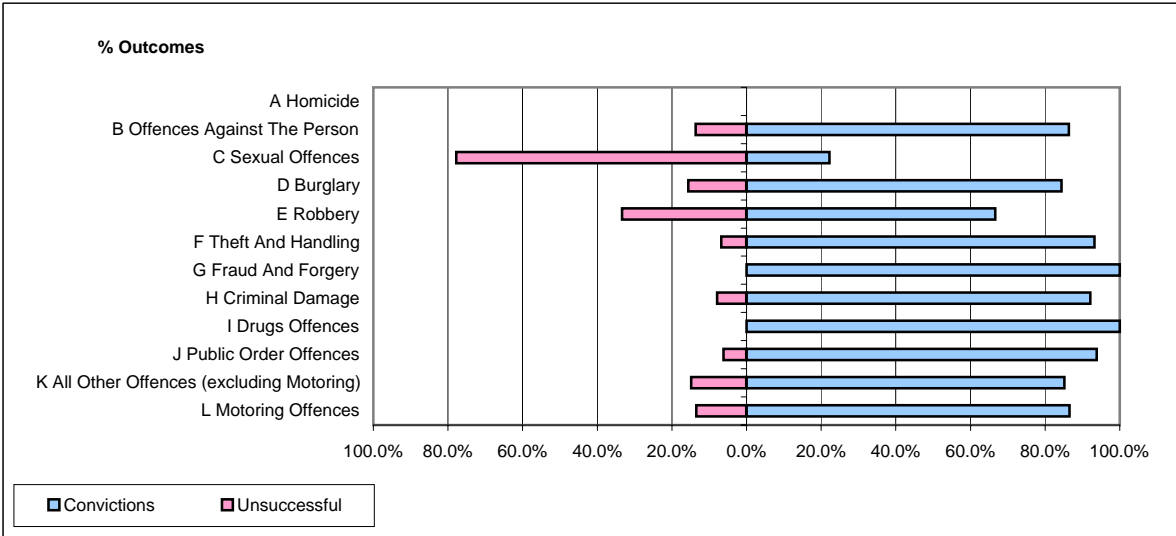


CPS OUTCOMES BY PRINCIPAL OFFENCE CATEGORY

November 2007

P35-Suffolk



	Convictions		Unsuccessful	
	Number of Defendants	%	Number of Defendants	%
A Homicide	0	0	0	0
B Offences Against The Person	146	86.4%	23	13.6%
C Sexual Offences	2	22.2%	7	77.8%
D Burglary	27	84.4%	5	15.6%
E Robbery	2	66.7%	1	33.3%
F Theft And Handling	110	93.2%	8	6.8%
G Fraud And Forgery	8	100.0%	0	0.0%
H Criminal Damage	35	92.1%	3	7.9%
I Drugs Offences	44	100.0%	0	0.0%
J Public Order Offences	121	93.8%	8	6.2%
K All Other Offences (excluding Motoring)	23	85.2%	4	14.8%
L Motoring Offences	314	86.5%	49	13.5%
Admin Finalisations	0	0.0%	15	100.0%
TOTAL	832	87.1%	123	12.9%