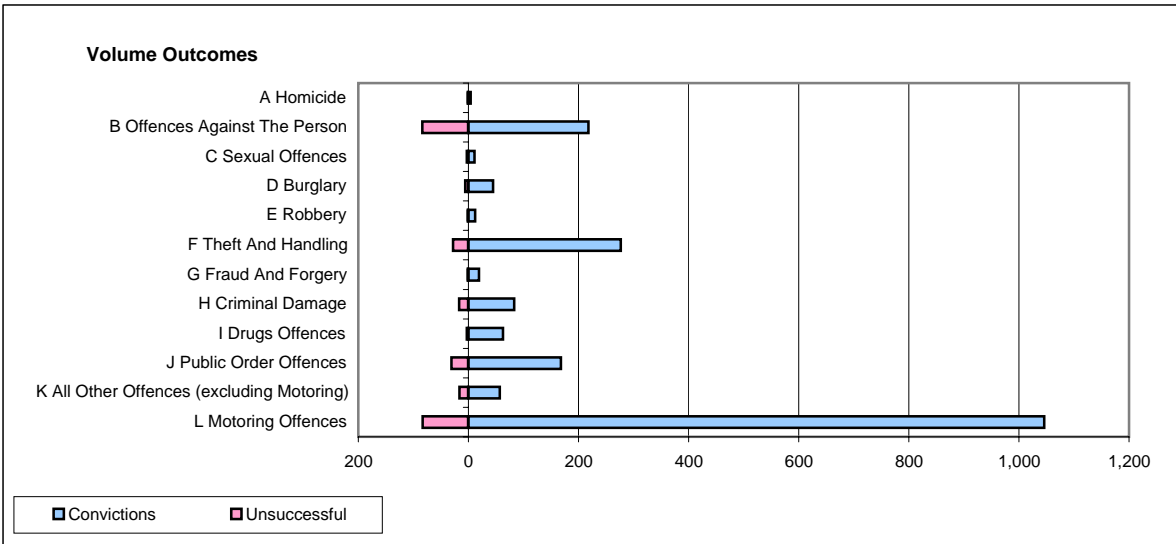
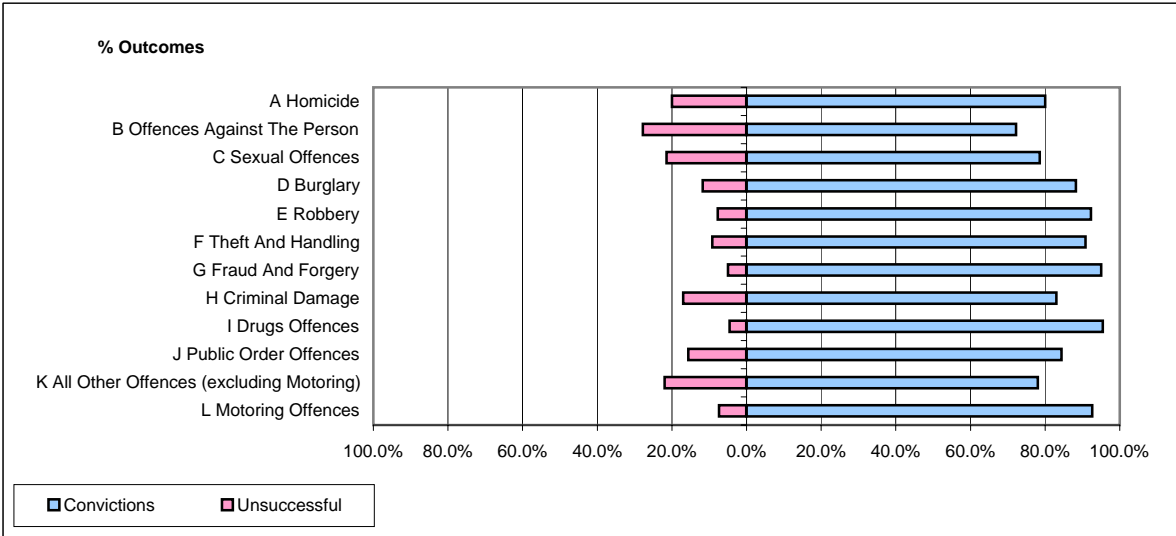


**CPS OUTCOMES BY PRINCIPAL OFFENCE CATEGORY**

**November 2007**

**P34-Staffordshire**



	Convictions		Unsuccessful	
	Number of Defendants	%	Number of Defendants	%
<b>A Homicide</b>	<b>4</b>	<b>80.0%</b>	<b>1</b>	<b>20.0%</b>
<b>B Offences Against The Person</b>	<b>218</b>	<b>72.2%</b>	<b>84</b>	<b>27.8%</b>
<b>C Sexual Offences</b>	<b>11</b>	<b>78.6%</b>	<b>3</b>	<b>21.4%</b>
<b>D Burglary</b>	<b>45</b>	<b>88.2%</b>	<b>6</b>	<b>11.8%</b>
<b>E Robbery</b>	<b>12</b>	<b>92.3%</b>	<b>1</b>	<b>7.7%</b>
<b>F Theft And Handling</b>	<b>277</b>	<b>90.8%</b>	<b>28</b>	<b>9.2%</b>
<b>G Fraud And Forgery</b>	<b>19</b>	<b>95.0%</b>	<b>1</b>	<b>5.0%</b>
<b>H Criminal Damage</b>	<b>83</b>	<b>83.0%</b>	<b>17</b>	<b>17.0%</b>
<b>I Drugs Offences</b>	<b>63</b>	<b>95.5%</b>	<b>3</b>	<b>4.5%</b>
<b>J Public Order Offences</b>	<b>168</b>	<b>84.4%</b>	<b>31</b>	<b>15.6%</b>
<b>K All Other Offences (excluding Motoring)</b>	<b>57</b>	<b>78.1%</b>	<b>16</b>	<b>21.9%</b>
<b>L Motoring Offences</b>	<b>1,046</b>	<b>92.6%</b>	<b>83</b>	<b>7.4%</b>
<b>Admin Finalisations</b>	<b>0</b>	<b>0.0%</b>	<b>27</b>	<b>100.0%</b>
<b>TOTAL</b>	<b>2,003</b>	<b>86.9%</b>	<b>301</b>	<b>13.1%</b>