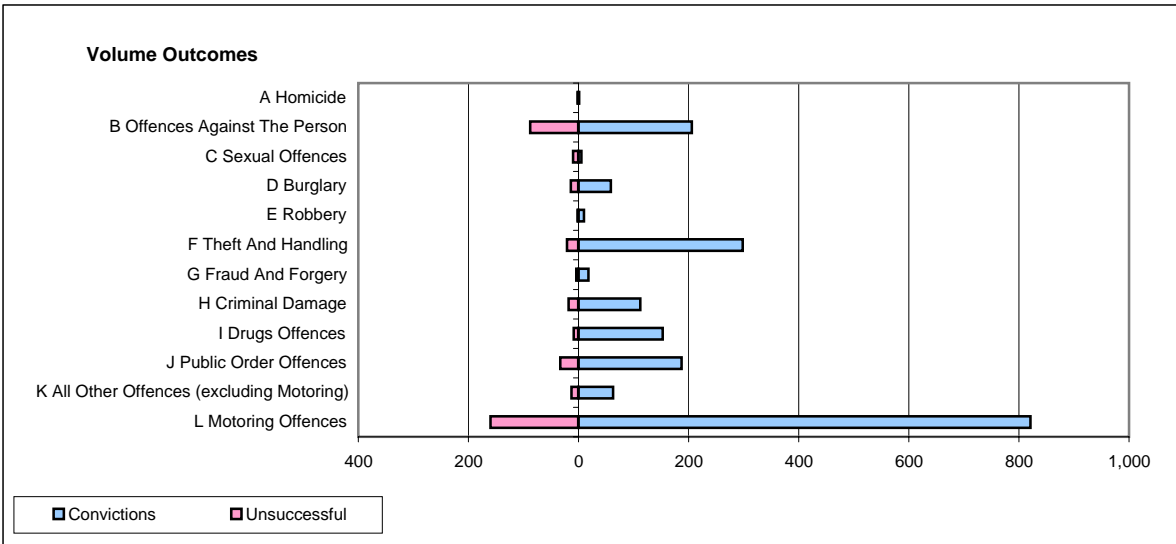
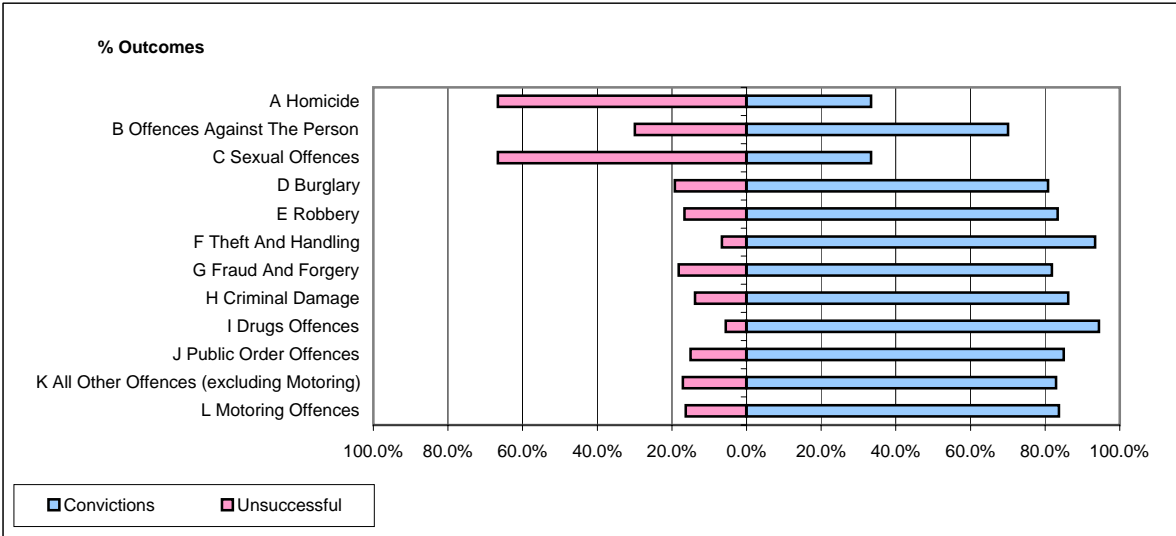


CPS OUTCOMES BY PRINCIPAL OFFENCE CATEGORY

November 2007

P32-SouthWales



	Convictions		Unsuccessful	
	Number of Defendants	%	Number of Defendants	%
A Homicide	1	33.3%	2	66.7%
B Offences Against The Person	206	70.1%	88	29.9%
C Sexual Offences	5	33.3%	10	66.7%
D Burglary	59	80.8%	14	19.2%
E Robbery	10	83.3%	2	16.7%
F Theft And Handling	298	93.4%	21	6.6%
G Fraud And Forgery	18	81.8%	4	18.2%
H Criminal Damage	112	86.2%	18	13.8%
I Drugs Offences	153	94.4%	9	5.6%
J Public Order Offences	187	85.0%	33	15.0%
K All Other Offences (excluding Motoring)	63	82.9%	13	17.1%
L Motoring Offences	821	83.7%	160	16.3%
Admin Finalisations	0	0.0%	77	100.0%
TOTAL	1,933	81.1%	451	18.9%