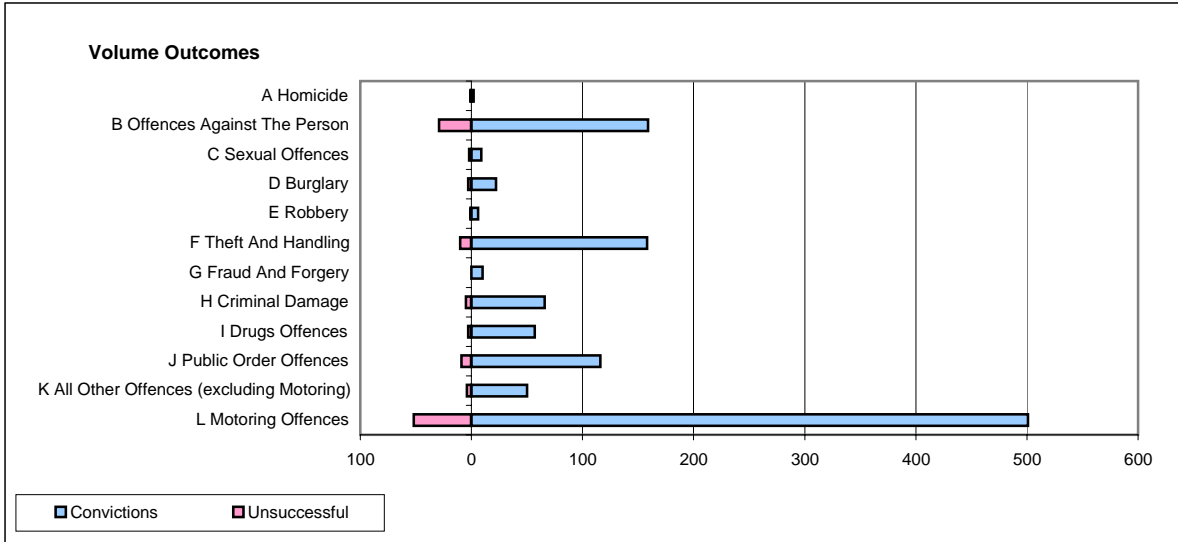
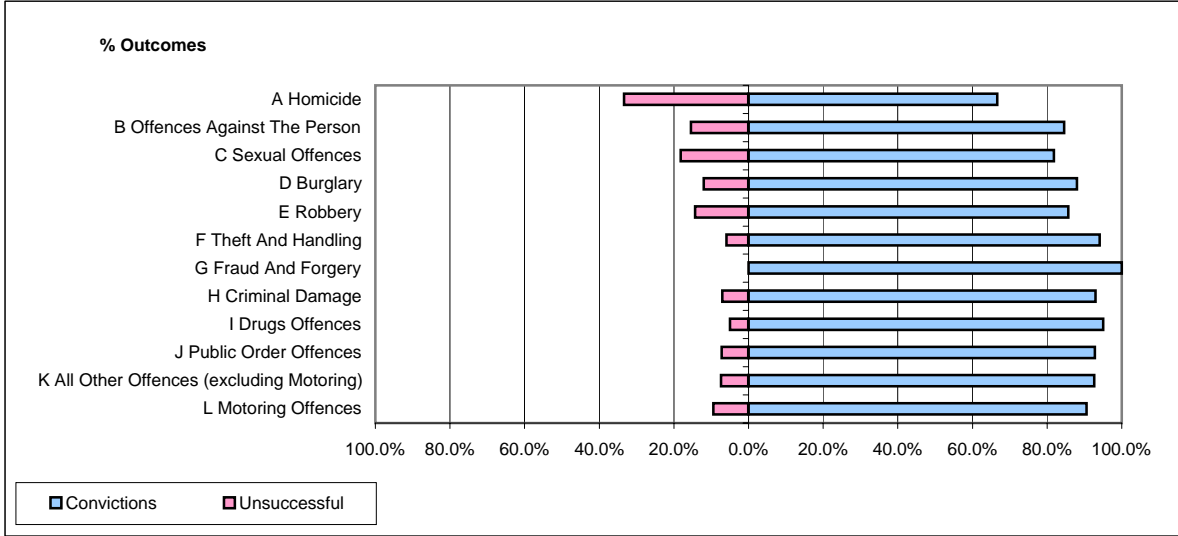


CPS OUTCOMES BY PRINCIPAL OFFENCE CATEGORY

November 2007

P26-Norfolk



	Convictions		Unsuccessful	
	Number of Defendants	%	Number of Defendants	%
A Homicide	2	66.7%	1	33.3%
B Offences Against The Person	159	84.6%	29	15.4%
C Sexual Offences	9	81.8%	2	18.2%
D Burglary	22	88.0%	3	12.0%
E Robbery	6	85.7%	1	14.3%
F Theft And Handling	158	94.0%	10	6.0%
G Fraud And Forgery	10	100.0%	0	0.0%
H Criminal Damage	66	93.0%	5	7.0%
I Drugs Offences	57	95.0%	3	5.0%
J Public Order Offences	116	92.8%	9	7.2%
K All Other Offences (excluding Motoring)	50	92.6%	4	7.4%
L Motoring Offences	501	90.6%	52	9.4%
Admin Finalisations	0	0.0%	25	100.0%
TOTAL	1,156	88.9%	144	11.1%