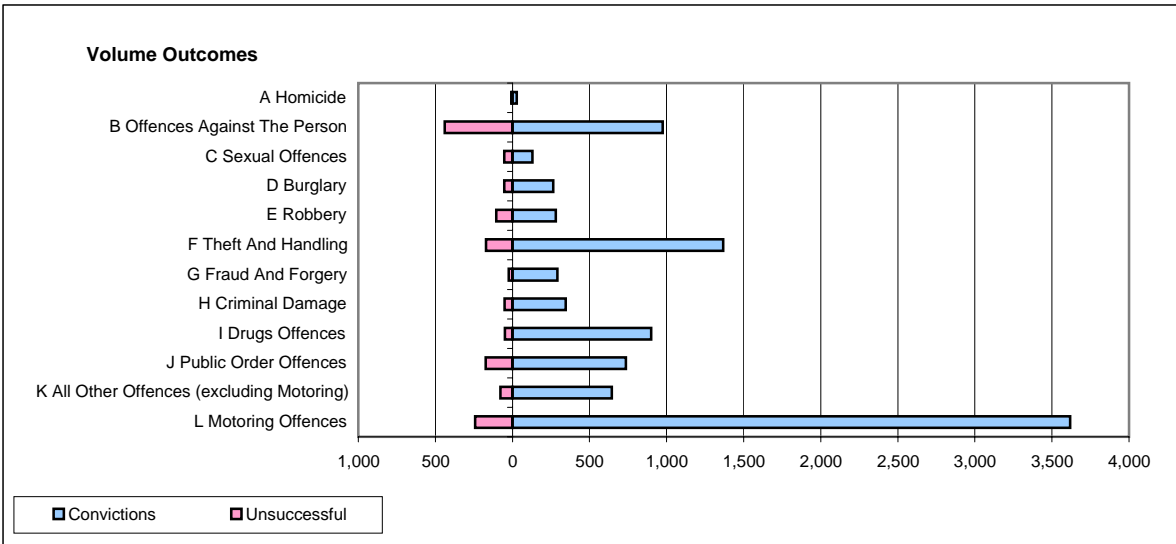
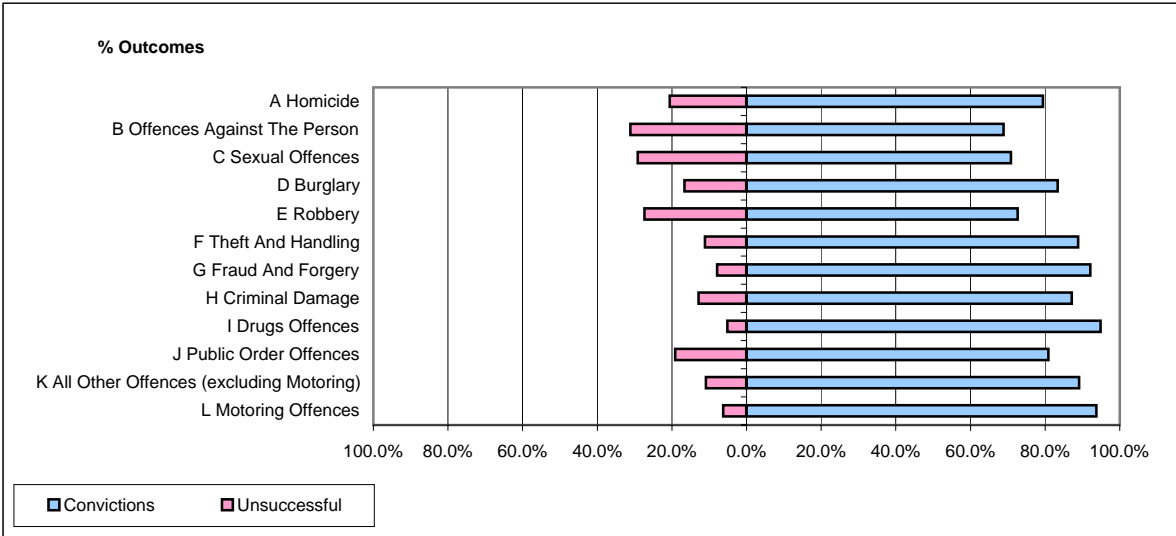


**CPS OUTCOMES BY PRINCIPAL OFFENCE CATEGORY**

**November 2007**

**P25-Metropolitan&City**



	Convictions		Unsuccessful	
	Number of Defendants	%	Number of Defendants	%
<b>A Homicide</b>	27	79.4%	7	20.6%
<b>B Offences Against The Person</b>	974	68.9%	440	31.1%
<b>C Sexual Offences</b>	129	70.9%	53	29.1%
<b>D Burglary</b>	265	83.3%	53	16.7%
<b>E Robbery</b>	282	72.7%	106	27.3%
<b>F Theft And Handling</b>	1,368	88.8%	172	11.2%
<b>G Fraud And Forgery</b>	291	92.1%	25	7.9%
<b>H Criminal Damage</b>	345	87.1%	51	12.9%
<b>I Drugs Offences</b>	900	94.8%	49	5.2%
<b>J Public Order Offences</b>	736	80.9%	174	19.1%
<b>K All Other Offences (excluding Motoring)</b>	645	89.1%	79	10.9%
<b>L Motoring Offences</b>	3,618	93.7%	242	6.3%
<b>Admin Finalisations</b>	0	0.0%	401	100.0%
<b>TOTAL</b>	<b>9,580</b>	<b>83.8%</b>	<b>1,852</b>	<b>16.2%</b>