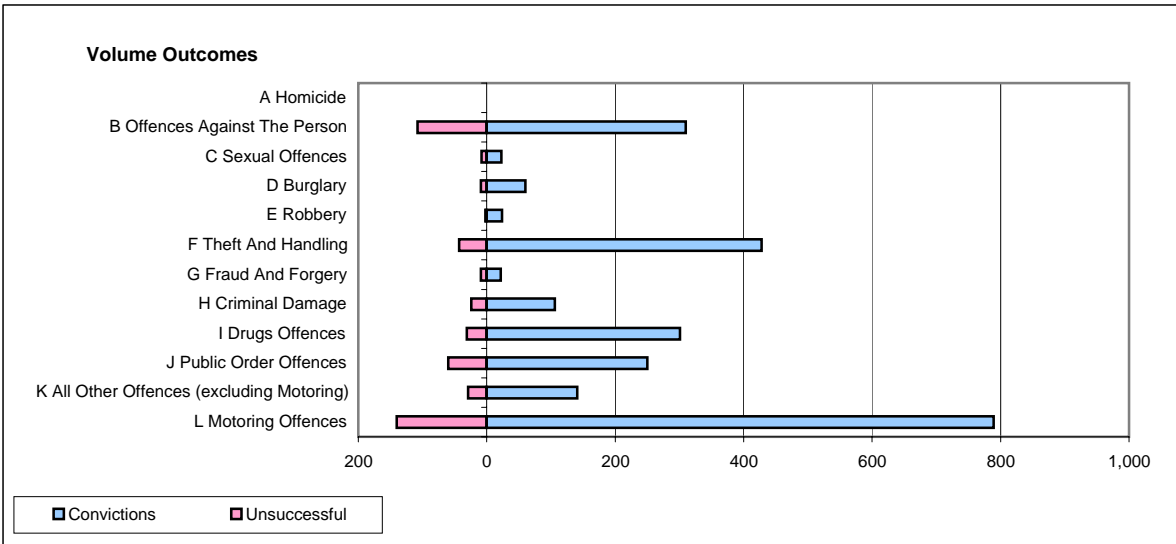
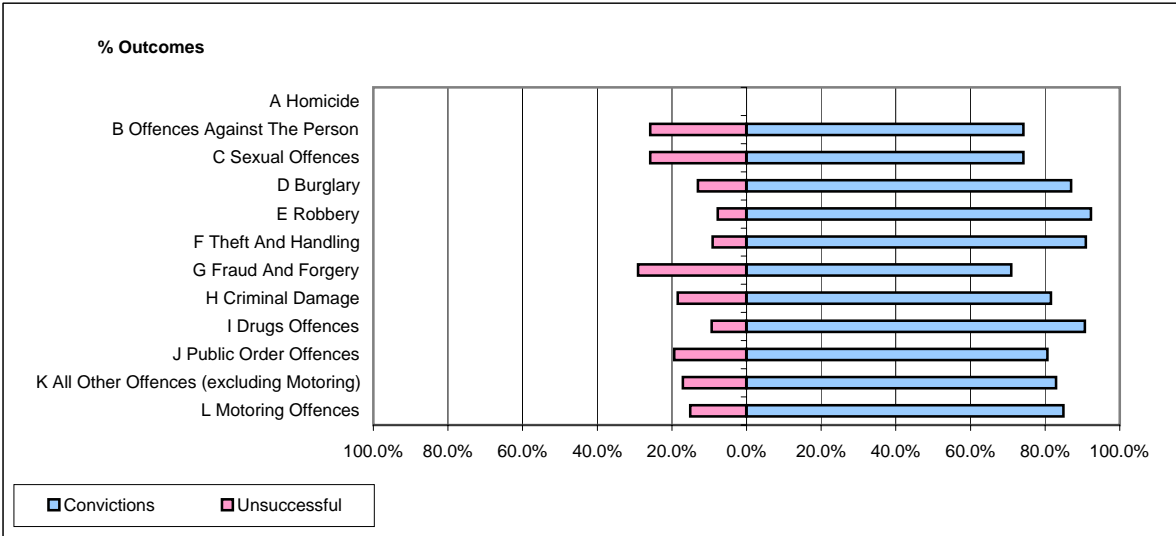


CPS OUTCOMES BY PRINCIPAL OFFENCE CATEGORY

November 2007

P24-Merseyside



	Convictions		Unsuccessful	
	Number of Defendants	%	Number of Defendants	%
A Homicide	0	0	0	0
B Offences Against The Person	310	74.2%	108	25.8%
C Sexual Offences	23	74.2%	8	25.8%
D Burglary	60	87.0%	9	13.0%
E Robbery	24	92.3%	2	7.7%
F Theft And Handling	428	90.9%	43	9.1%
G Fraud And Forgery	22	71.0%	9	29.0%
H Criminal Damage	106	81.5%	24	18.5%
I Drugs Offences	301	90.7%	31	9.3%
J Public Order Offences	250	80.6%	60	19.4%
K All Other Offences (excluding Motoring)	141	82.9%	29	17.1%
L Motoring Offences	789	84.9%	140	15.1%
Admin Finalisations	0	0.0%	94	100.0%
TOTAL	2,454	81.5%	557	18.5%